

Woodbury County, Iowa

Horizontal Datum: **NAD 83(2011)** - Vertical Datum: **NAVD 1988**

Iowa State Plane North Zone (1401)

Iowa Regional Coordinate System Zone 4 Sioux City-Iowa Falls LCC

US Survey Feet

2015

Point Name: **8002**

GPS No. (1998): **8002**

Designation: 884224 1 (Set by DENI Associates in 1998)

NAD 83(NA2011) Latitude: **N42°25'41.77439"**

Longitude: **W95°40'09.94459"**

NAVD 88 Ortho Height: **1423.800sft**

Ellip. Ht: **1333.011sft**

Geoid09

Iowa North Zone (1401) Northing: **3626630.150sft**

Easting: **4335618.594sft**

Mapping Angle: **-1°28'13"**

Combination Scale Factor: **0.999890454**

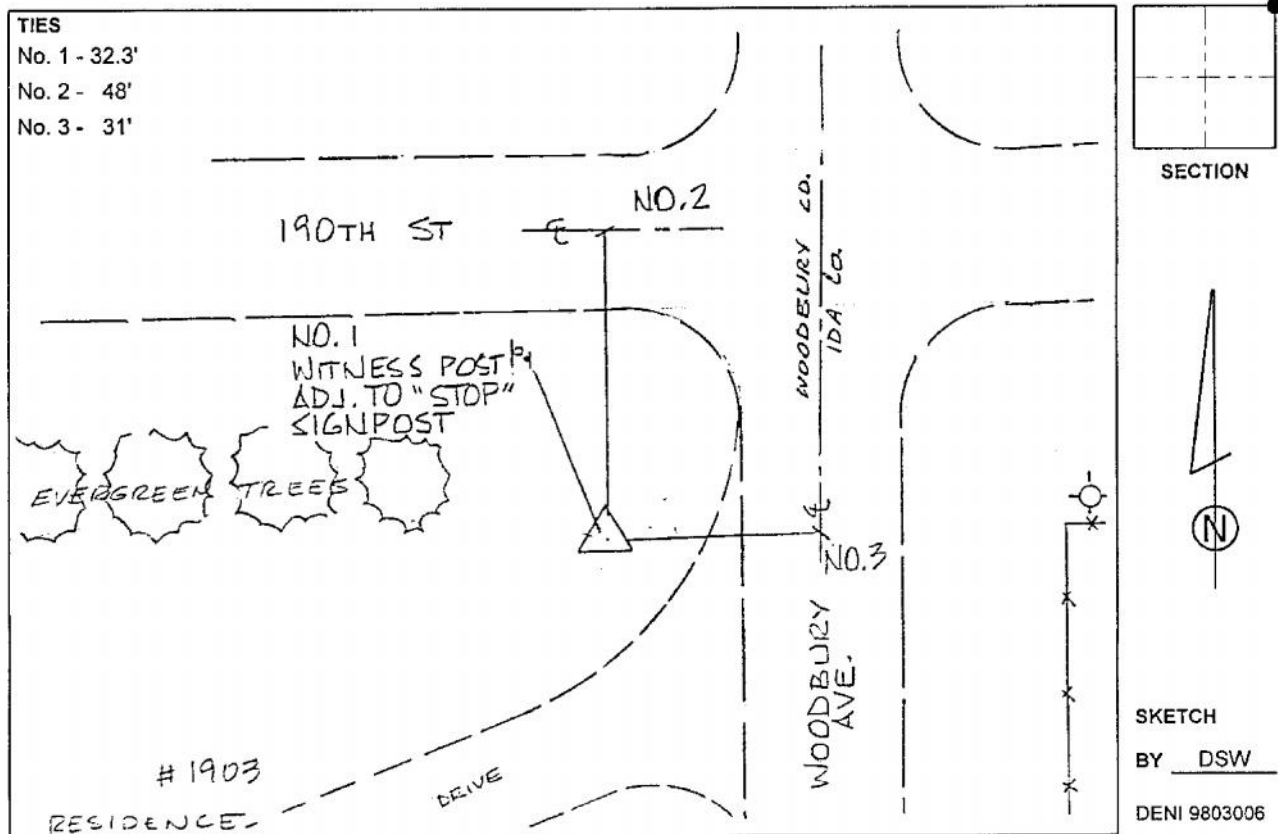
IaRCS Zone 4 Northing: **8562822.318sft**

Easting: **14274256.239sft**

Mapping Angle: **-00° 33' 55"**

Combination Scale Factor: **0.999982836**

Monument Type: 3-1/4" aluminum cap on aluminum rod in 6" PVC pipe with aluminum access cover.



This document was prepared by Dan Corbin, Inc. on March 6, 2015 for Woodbury County, Iowa.