

**Woodbury County, Iowa**

Horizontal Datum: **NAD 83(2011)** - Vertical Datum: **NAVD 1988**

Iowa State Plane North Zone (1401)

Iowa Regional Coordinate System Zone 4 Sioux City-Iowa Falls LCC

US Survey Feet

**2015**

Point Name: **8004**

GPS No. (1998): **8004**

**Designation:** 874224 1 (Set by DENI Associates in 1998)

NAD 83(NA2011) Latitude: **N42°20'28.95294"**

Longitude: **W95°40'13.79610"**

NAVD 88 Ortho Height: **1294.280sft**

Ellip. Ht: **1203.172sft**

**Geoid09**

Iowa North Zone (1401) Northing: **3594981.606sft**

Easting: **4334516.919sft**

Mapping Angle: **-1°28'16"**

Combination Scale Factor: **0.999904089**

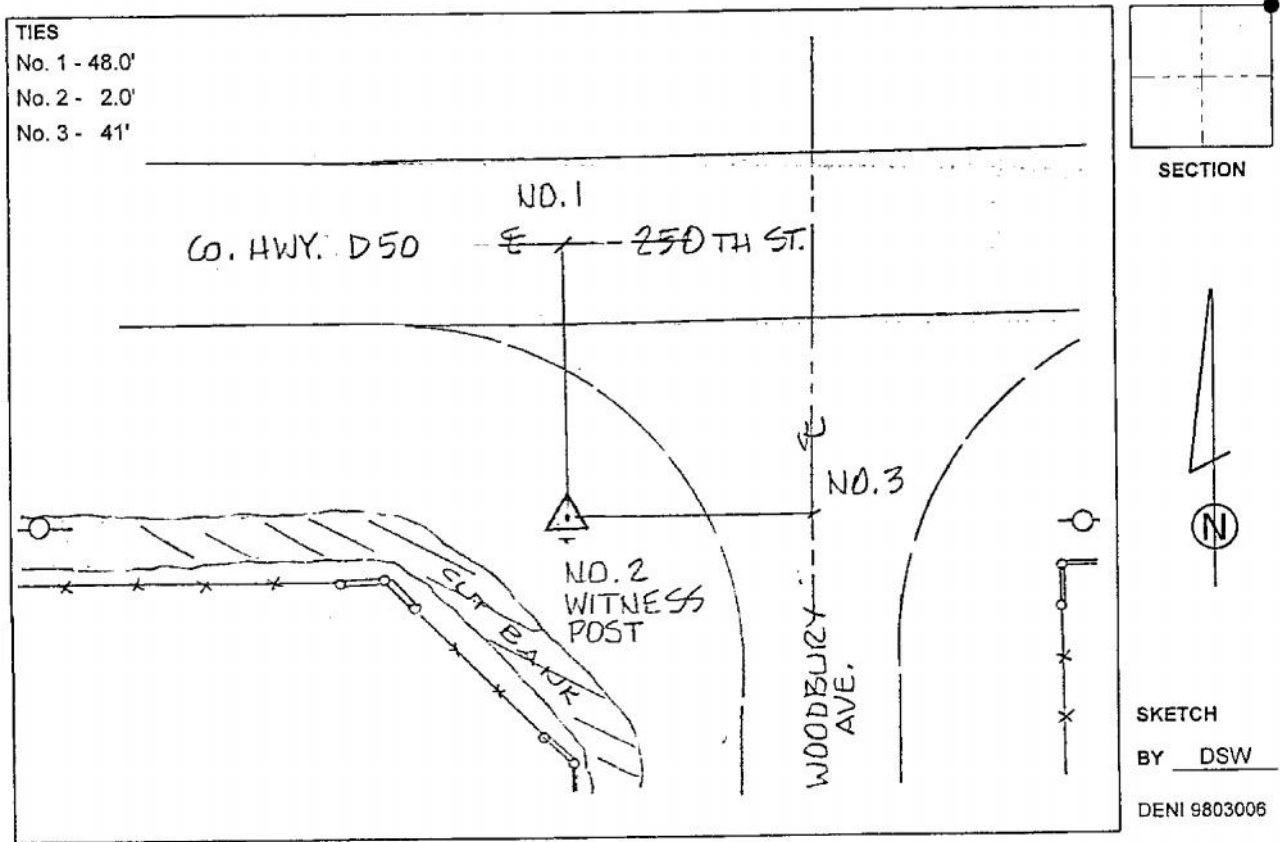
IaRCS Zone 4 Northing: **8531157.443sft**

Easting: **14273654.580sft**

Mapping Angle: **-00° 33' 57"**

Combination Scale Factor: **0.999992965**

**Monument Type:** 3-1/4" aluminum cap on aluminum rod in 6" PVC pipe with aluminum access cover.



*This document was prepared by Dan Corbin, Inc. on March 6, 2015 for Woodbury County, Iowa.*