

**Woodbury County, Iowa**

Horizontal Datum: **NAD 83(2011)** - Vertical Datum: **NAVD 1988**

Iowa State Plane North Zone (1401)

Iowa Regional Coordinate System Zone 4 Sioux City-Iowa Falls LCC

US Survey Feet

**2015**

Point Name: **8005**

GPS No. (1998): **8005**

**Designation:** 874236 2 (Set by DENI Associates in 1998)

NAD 83(NA2011) Latitude: **N42°17'53.49778"**

Longitude: **W95°40'13.92277"**

NAVD 88 Ortho Height: **1315.730sft**

Ellip. Ht: **1224.421sft**

**Geoid09**

Iowa North Zone (1401) Northing: **3579250.652sft**

Easting: **4334103.423sft**

Mapping Angle: **-1°28'16"**

Combination Scale Factor: **0.999907621**

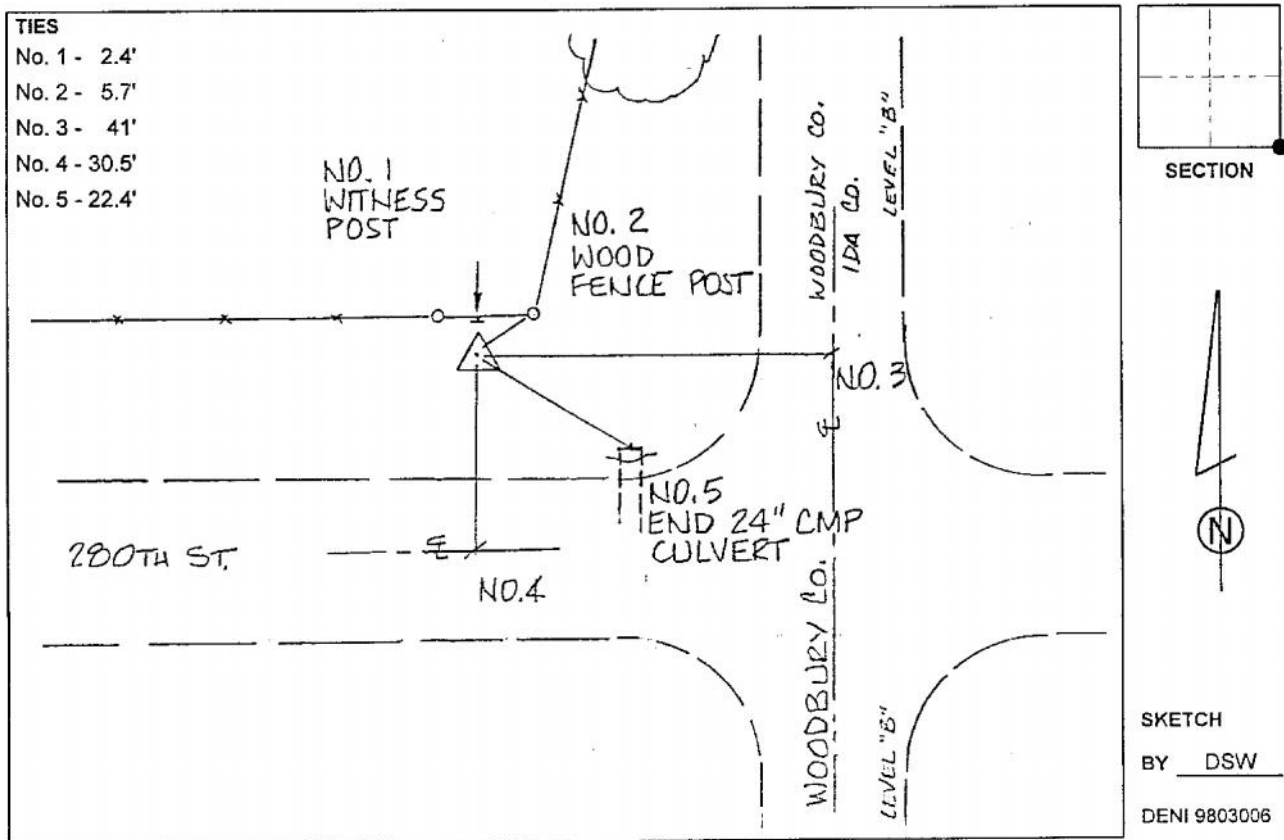
IaRCS Zone 4 Northing: **8515420.532sft**

Easting: **14273489.613sft**

Mapping Angle: **-00° 33' 57"**

Combination Scale Factor: **0.999994741**

**Monument Type:** 3-1/4" aluminum cap on aluminum rod in 6" PVC pipe with aluminum access cover.



*This document was prepared by Dan Corbin, Inc. on March 6, 2015 for Woodbury County, Iowa.*