

Woodbury County, Iowa

Horizontal Datum: **NAD 83(2011)** - Vertical Datum: **NAVD 1988**

Iowa State Plane North Zone (1401)

Iowa Regional Coordinate System Zone 4 Sioux City-Iowa Falls LCC

US Survey Feet

2015

Point Name: **8006**

GPS No. (1998): **8006**

Designation: 864224 1 (Set by DENI Associates in 1998)

NAD 83(NA2011) Latitude: **N42°15'16.91179"**

Longitude: **W95°40'17.49115"**

NAVD 88 Ortho Height: **1171.210sft**

Ellip. Ht: **1079.708sft**

Geoid09

Iowa North Zone (1401) Northing: **3563411.954sft**

Easting: **4333428.239sft**

Mapping Angle: **-1°28'18"**

Combination Scale Factor: **0.999919672**

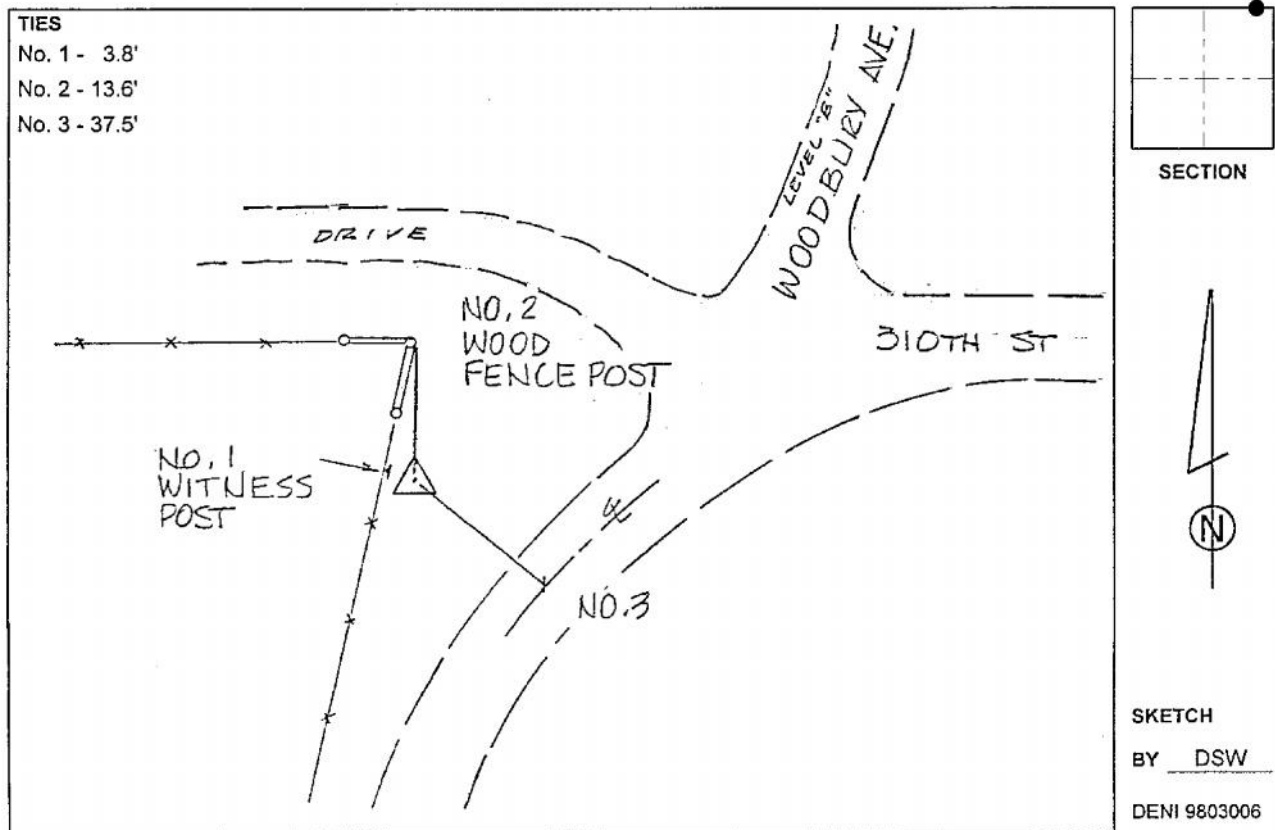
IaRCS Zone 4 Northing: **8499571.775sft**

Easting: **14273064.671sft**

Mapping Angle: **-00° 34' 00"**

Combination Scale Factor: **1.000005055**

Monument Type: 3-1/4" aluminum cap on aluminum rod in 6" PVC pipe with aluminum access cover.



This document was prepared by Dan Corbin, Inc. on March 6, 2015 for Woodbury County, Iowa.