

**Woodbury County, Iowa**

Horizontal Datum: **NAD 83(2011)** - Vertical Datum: **NAVD 1988**

Iowa State Plane North Zone (1401)

Iowa Regional Coordinate System Zone 4 Sioux City-Iowa Falls LCC

US Survey Feet

**2015**

Point Name: **8009**

GPS No. (1998): **8009**

**Designation:** 864221 1 (Set by DENI Associates in 1998)

NAD 83(NA2011) Latitude: **N42°15'15.13932"**

Longitude: **W95°44'05.75475"**

NAVD 88 Ortho Height: **1257.000sft**

Ellip. Ht: **1165.917sft**

**Geoid09**

Iowa North Zone (1401) Northing: **3563679.912sft**

Easting: **4316263.581sft**

Mapping Angle: **-1°30'53"**

Combination Scale Factor: **0.999915621**

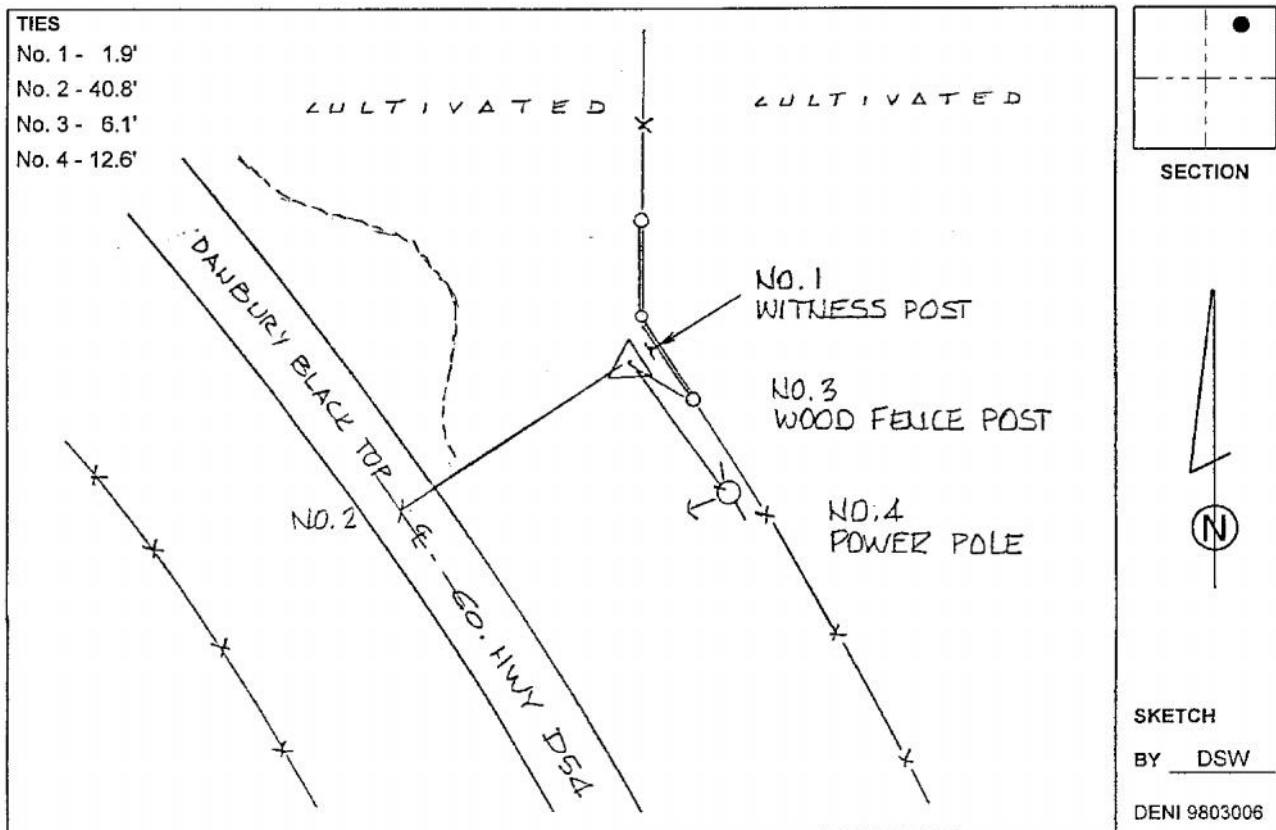
IaRCS Zone 4 Northing: **8499568.543sft**

Easting: **14255896.452sft**

Mapping Angle: **-00° 36' 34"**

Combination Scale Factor: **1.000000968**

**Monument Type:** 3-1/4" aluminum cap on aluminum rod in 6" PVC pipe with aluminum access cover.



*This document was prepared by Dan Corbin, Inc. on March 6, 2015 for Woodbury County, Iowa.*