

Woodbury County, Iowa

Horizontal Datum: **NAD 83(2011)** - Vertical Datum: **NAVD 1988**

Iowa State Plane North Zone (1401)

Iowa Regional Coordinate System Zone 4 Sioux City-Iowa Falls LCC

US Survey Feet

2015

Point Name: **8010**

GPS No. (1998): **8010**

Designation: 864203 4 (Set by DENI Associates in 1998)

NAD 83(NA2011) Latitude: **N42°17'48.83091"**

Longitude: **W95°43'43.96776"**

NAVD 88 Ortho Height: **1339.150sft**

Ellip. Ht: **1248.255sft**

Geoid09

Iowa North Zone (1401) Northing: **3579189.073sft**

Easting: **4318311.572sft**

Mapping Angle: **-1°30'38"**

Combination Scale Factor: **0.999906629**

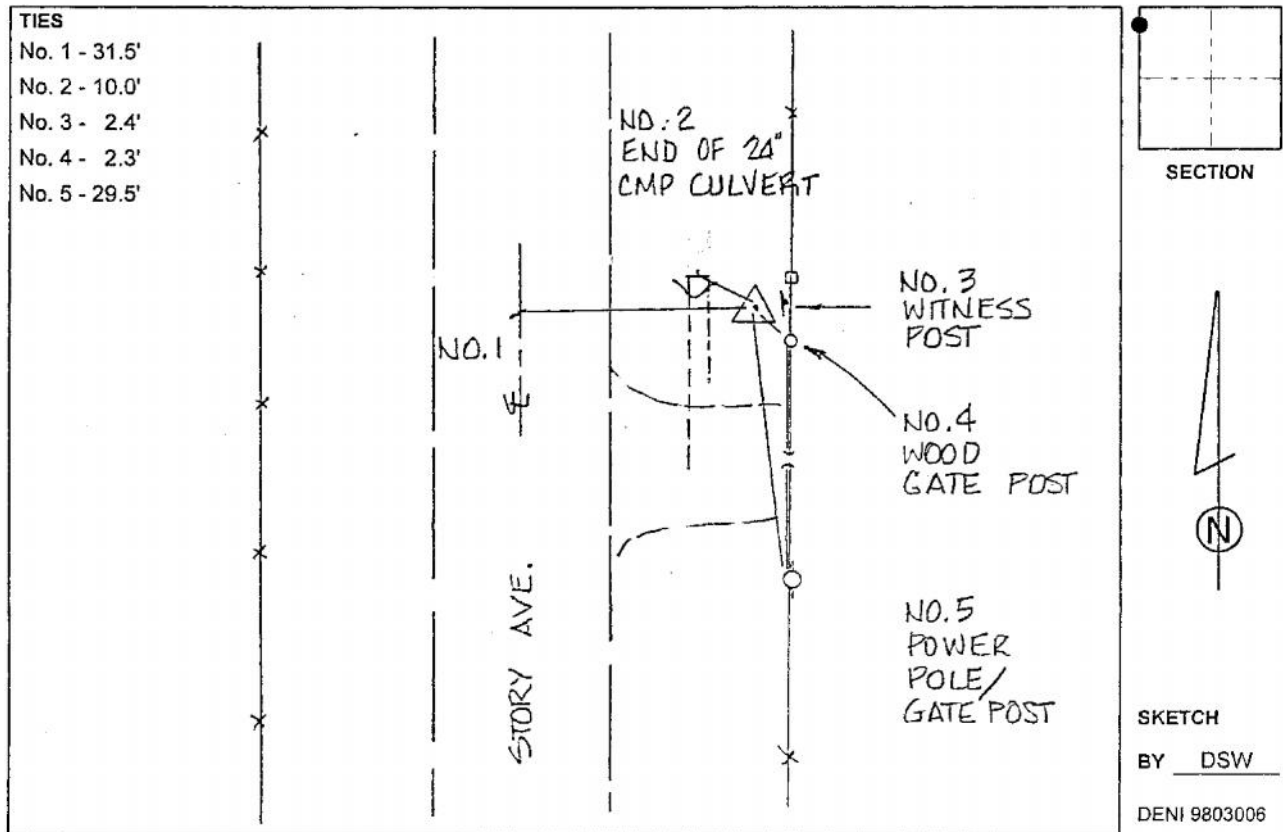
IaRCS Zone 4 Northing: **8515109.466sft**

Easting: **14257699.326sft**

Mapping Angle: **-00° 36' 19"**

Combination Scale Factor: **0.999993692**

Monument Type: 3-1/4" aluminum cap on aluminum rod in 6" PVC pipe with aluminum access cover.



This document was prepared by Dan Corbin, Inc. on March 6, 2015 for Woodbury County, Iowa.