

Woodbury County, Iowa

Horizontal Datum: **NAD 83(2011)** - Vertical Datum: **NAVD 1988**

Iowa State Plane North Zone (1401)

Iowa Regional Coordinate System Zone 4 Sioux City-Iowa Falls LCC

US Survey Feet

2015

Point Name: **8011**

GPS No. (1998): **8011**

Designation: 874221 1 (Set by DENI Associates in 1998)

NAD 83(NA2011) Latitude: **N42°20'29.52759"**

Longitude: **W95°43'45.07838"**

NAVD 88 Ortho Height: **1402.840sft**

Ellip. Ht: **1312.165sft**

Geoid09

Iowa North Zone (1401) Northing: **3595452.590sft**

Easting: **4318657.027sft**

Mapping Angle: **-1°30'39"**

Combination Scale Factor: **0.999898873**

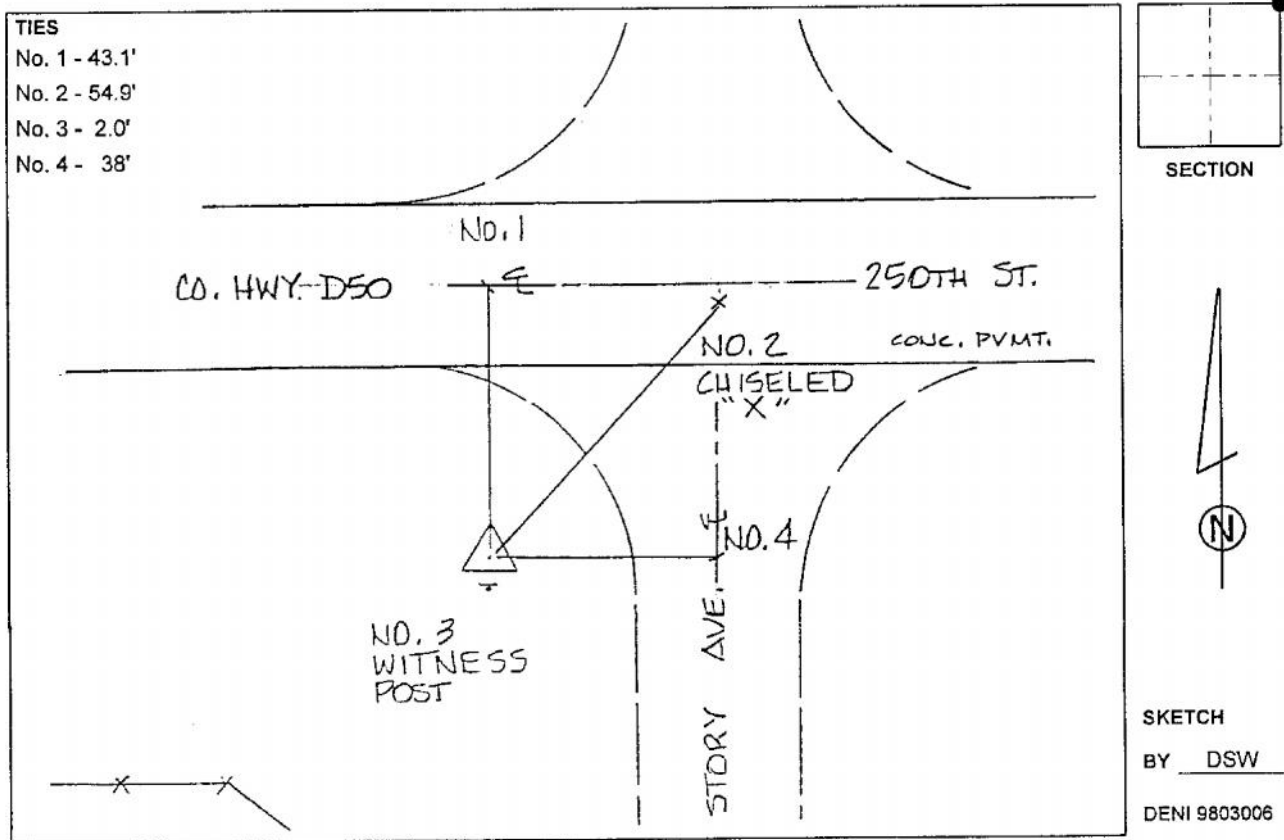
IaRCS Zone 4 Northing: **8531377.845sft**

Easting: **14257787.813sft**

Mapping Angle: **-00° 36' 20"**

Combination Scale Factor: **0.999987736**

Monument Type: 3-1/4" aluminum cap on aluminum rod in 6" PVC pipe with aluminum access cover.



This document was prepared by Dan Corbin, Inc. on March 6, 2015 for Woodbury County, Iowa.