

**Woodbury County, Iowa**

Horizontal Datum: **NAD 83(2011)** - Vertical Datum: **NAVD 1988**

Iowa State Plane North Zone (1401)

Iowa Regional Coordinate System Zone 4 Sioux City-Iowa Falls LCC

US Survey Feet

**2015**

Point Name: **8012**

GPS No. (1998): **8012**

**Designation:** 884233 2 (Set by DENI Associates in 1998)

NAD 83(NA2011) Latitude: **N42°23'07.01273"**

Longitude: **W95°43'43.00468"**

NAVD 88 Ortho Height: **1330.840sft**

Ellip. Ht: **1240.333sft**

**Geoid09**

Iowa North Zone (1401) Northing: **3611384.874sft**

Easting: **4319232.914sft**

Mapping Angle: **-1°30'38"**

Combination Scale Factor: **0.999898271**

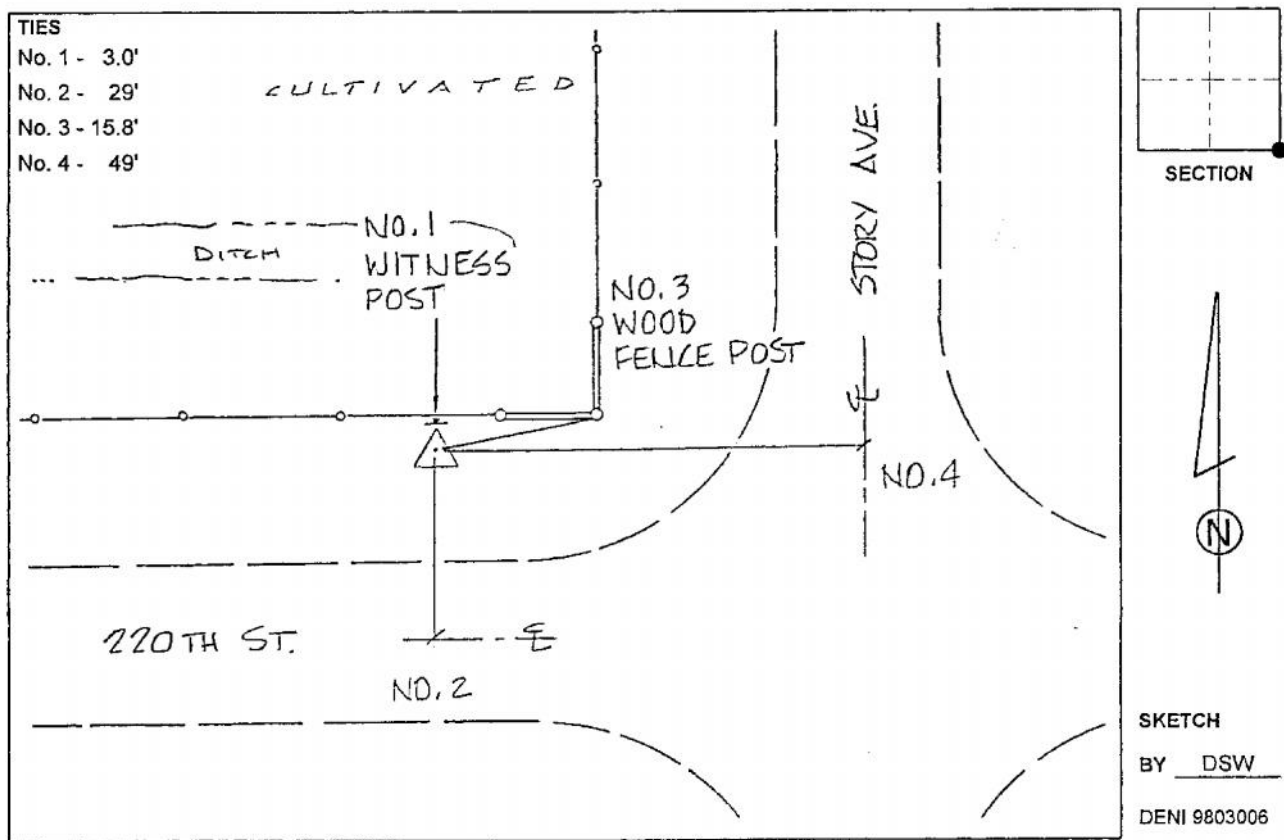
IaRCS Zone 4 Northing: **8547318.672sft**

Easting: **14258111.957sft**

Mapping Angle: **-00° 36' 19"**

Combination Scale Factor: **0.999988924**

**Monument Type:** 3-1/4" aluminum cap on aluminum rod in 6" PVC pipe with aluminum access cover.



*This document was prepared by Dan Corbin, Inc. on March 6, 2015 for Woodbury County, Iowa.*