

Woodbury County, Iowa

Horizontal Datum: **NAD 83(2011)** - Vertical Datum: **NAVD 1988**

Iowa State Plane North Zone (1401)

Iowa Regional Coordinate System Zone 4 Sioux City-Iowa Falls LCC

US Survey Feet

2015

Point Name: **8013**

GPS No. (1998): **8013**

Designation: 884216 2 (Set by DENI Associates in 1998)

NAD 83(NA2011) Latitude: **N42°25'43.95359"**

Longitude: **W95°43'51.30174"**

NAVD 88 Ortho Height: **1356.710sft**

Ellip. Ht: **1266.357sft**

Geoid09

Iowa North Zone (1401) Northing: **3627282.657sft**

Easting: **4319029.672sft**

Mapping Angle: **-1°30'43"**

Combination Scale Factor: **0.999893590**

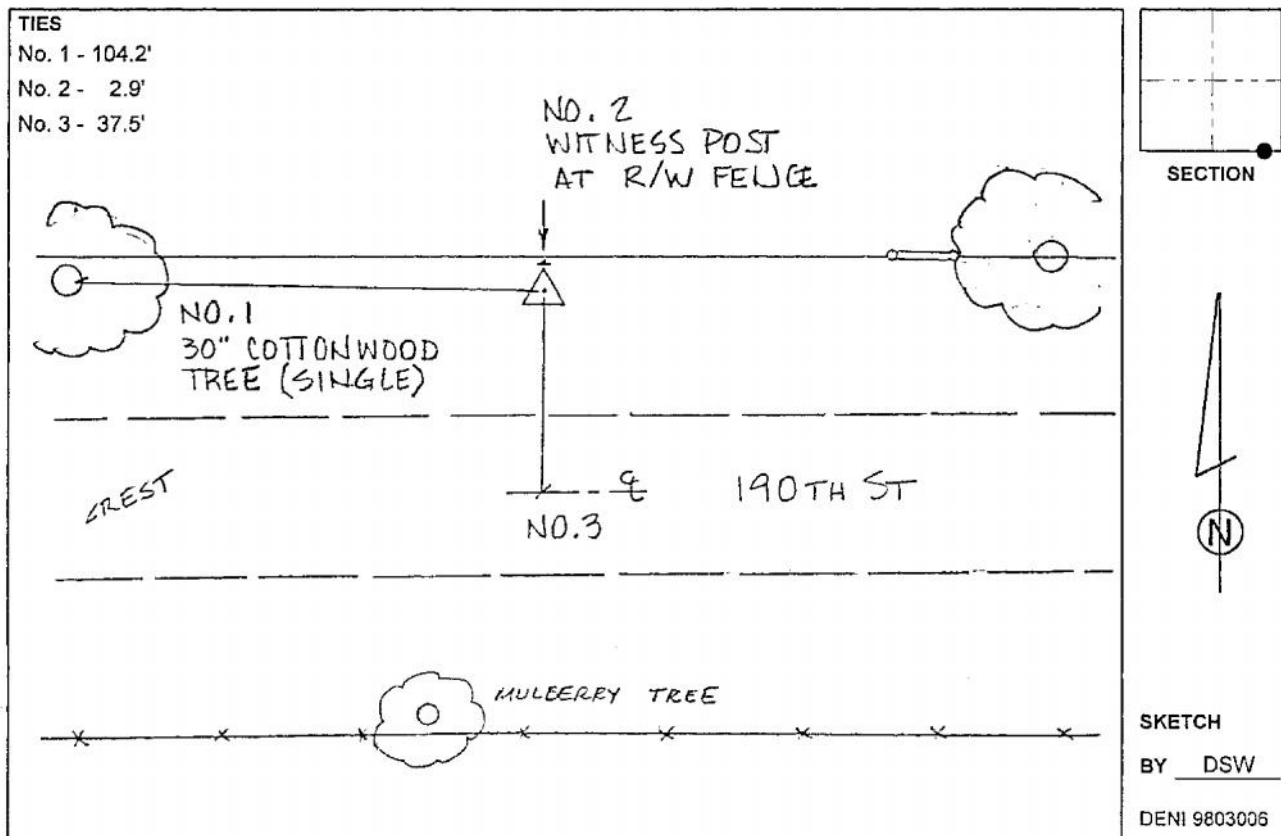
IaRCS Zone 4 Northing: **8563212.719sft**

Easting: **14257657.542sft**

Mapping Angle: **-00° 36' 24"**

Combination Scale Factor: **0.999986009**

Monument Type: 3-1/4" aluminum cap on aluminum rod in 6" PVC pipe with aluminum access cover.



This document was prepared by Dan Corbin, Inc. on March 6, 2015 for Woodbury County, Iowa.