

**Woodbury County, Iowa**

Horizontal Datum: **NAD 83(2011)** - Vertical Datum: **NAVD 1988**

Iowa State Plane North Zone (1401)

Iowa Regional Coordinate System Zone 4 Sioux City-Iowa Falls LCC

US Survey Feet

**2015**

Point Name: **8015**

GPS No. (1998): **8015**

**Designation:** 894213 2 (Set by DENI Associates in 1998)

NAD 83(NA2011) Latitude: **N42°31'13.11714"**

Longitude: **W95°44'34.35524"**

NAVD 88 Ortho Height: **1168.200sft**

Ellip. Ht: **1078.134sft**

**Geoid09**

Iowa North Zone (1401) Northing: **3660677.339sft**

Easting: **4316686.023sft**

Mapping Angle: **-1°31'12"**

Combination Scale Factor: **0.999897221**

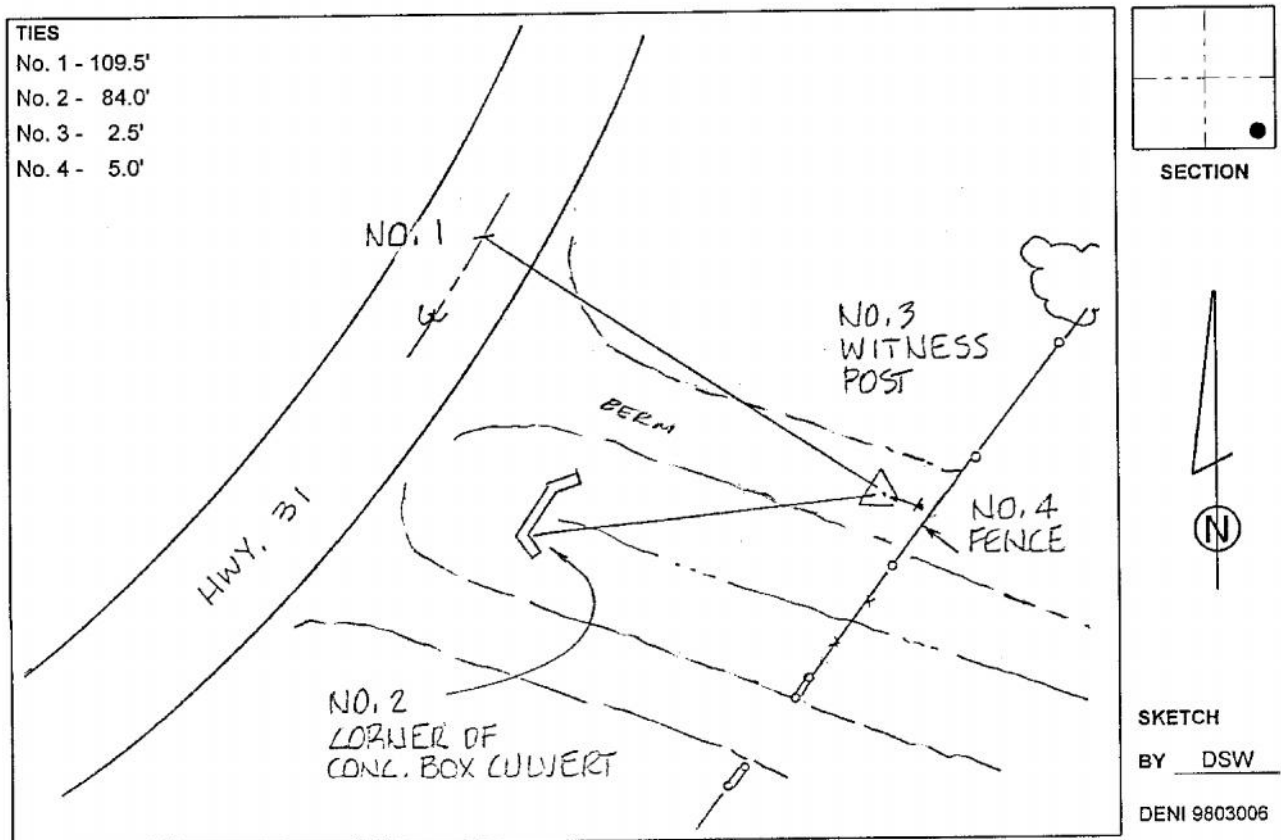
IaRCS Zone 4 Northing: **8596569.360sft**

Easting: **14254786.332sft**

Mapping Angle: **-00° 36' 54"**

Combination Scale Factor: **0.999993394**

**Monument Type:** 3-1/4" aluminum cap on aluminum rod in 6" PVC pipe with aluminum access cover.



*This document was prepared by Dan Corbin, Inc. on March 6, 2015 for Woodbury County, Iowa.*