

**Woodbury County, Iowa**

Horizontal Datum: **NAD 83(2011)** - Vertical Datum: **NAVD 1988**

Iowa State Plane North Zone (1401)

Iowa Regional Coordinate System Zone 4 Sioux City-Iowa Falls LCC

US Survey Feet

**2015**

Point Name: **8016**

GPS No. (1998): **8016**

**Designation:** 894201 1 (Set by DENI Associates in 1998)

NAD 83(NA2011) Latitude: **N42°33'36.96428"**

Longitude: **W95°44'31.89763"**

NAVD 88 Ortho Height: **1151.930sft**

Ellip. Ht: **1061.991sft**

**Geoid09**

Iowa North Zone (1401) Northing: **3675228.998sft**

Easting: **4317256.160sft**

Mapping Angle: **-1°31'11"**

Combination Scale Factor: **0.999896449**

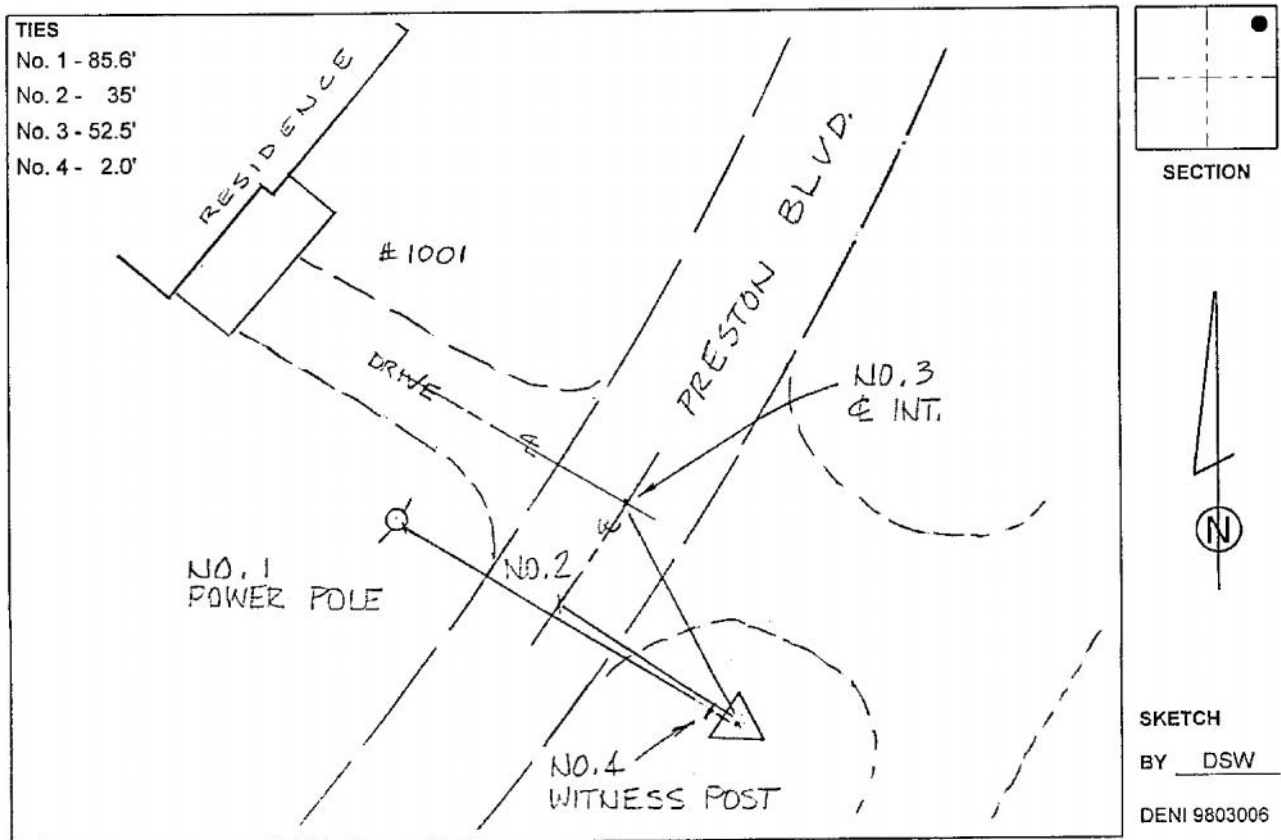
IaRCS Zone 4 Northing: **8611129.624sft**

Easting: **14255126.536sft**

Mapping Angle: **-00° 36' 52"**

Combination Scale Factor: **0.999994252**

**Monument Type:** 3-1/4" aluminum cap on aluminum rod in 6" PVC pipe with aluminum access cover.



*This document was prepared by Dan Corbin, Inc. on March 6, 2015 for Woodbury County, Iowa.*