

Woodbury County, Iowa

Horizontal Datum: **NAD 83(2011)** - Vertical Datum: **NAVD 1988**

Iowa State Plane North Zone (1401)

Iowa Regional Coordinate System Zone 4 Sioux City-Iowa Falls LCC

US Survey Feet

2015

Point Name: **8017**

GPS No. (1998): **8017**

Designation: 894204 1 (Set by DENI Associates in 1998)

NAD 83(NA2011) Latitude: **N42°33'38.57283"**

Longitude: **W95°48'01.61277"**

NAVD 88 Ortho Height: **1308.690sft**

Ellip. Ht: **1219.160sft**

Geoid09

Iowa North Zone (1401) Northing: **3675813.378sft**

Easting: **4301572.114sft**

Mapping Angle: **-1°33'33"**

Combination Scale Factor: **0.999888936**

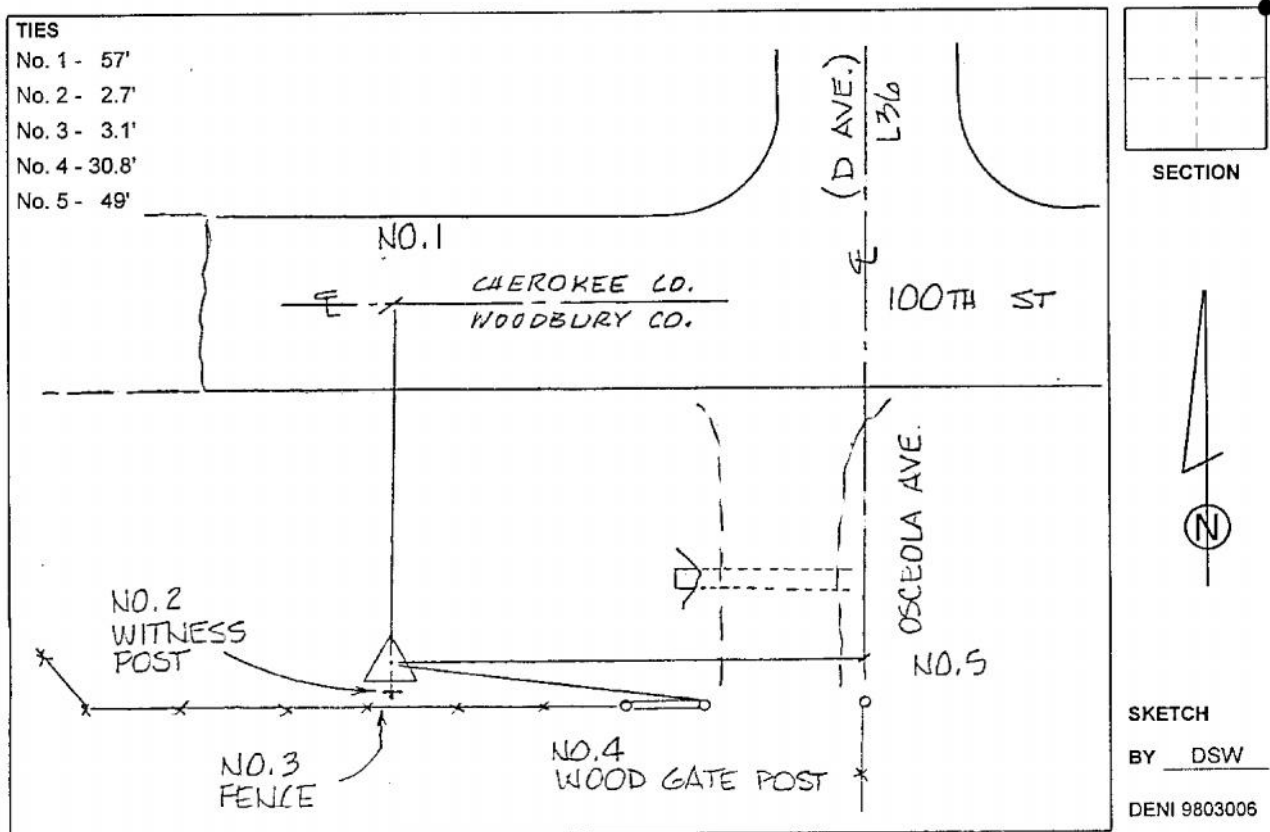
IaRCS Zone 4 Northing: **8611466.166sft**

Easting: **14239433.677sft**

Mapping Angle: **-00° 39' 14"**

Combination Scale Factor: **0.999986730**

Monument Type: 3-1/4" aluminum cap on aluminum rod in 6" PVC pipe with aluminum access cover.



This document was prepared by Dan Corbin, Inc. on March 6, 2015 for Woodbury County, Iowa.