

Woodbury County, Iowa

Horizontal Datum: **NAD 83(2011)** - Vertical Datum: **NAVD 1988**

Iowa State Plane North Zone (1401)

Iowa Regional Coordinate System Zone 4 Sioux City-Iowa Falls LCC

US Survey Feet

2015

Point Name: **8018**

GPS No. (1998): **8018**

Designation: 894215 3 (Set by DENI Associates in 1998)

NAD 83(NA2011) Latitude: **N42°31'07.13115"**

Longitude: **W95°47'40.17235"**

NAVD 88 Ortho Height: **1277.387sft**

Ellip. Ht: **1187.701sft**

Geoid09

Iowa North Zone (1401) Northing: **3660444.969sft**

Easting: **4302759.978sft**

Mapping Angle: **-1°33'18"**

Combination Scale Factor: **0.999892069**

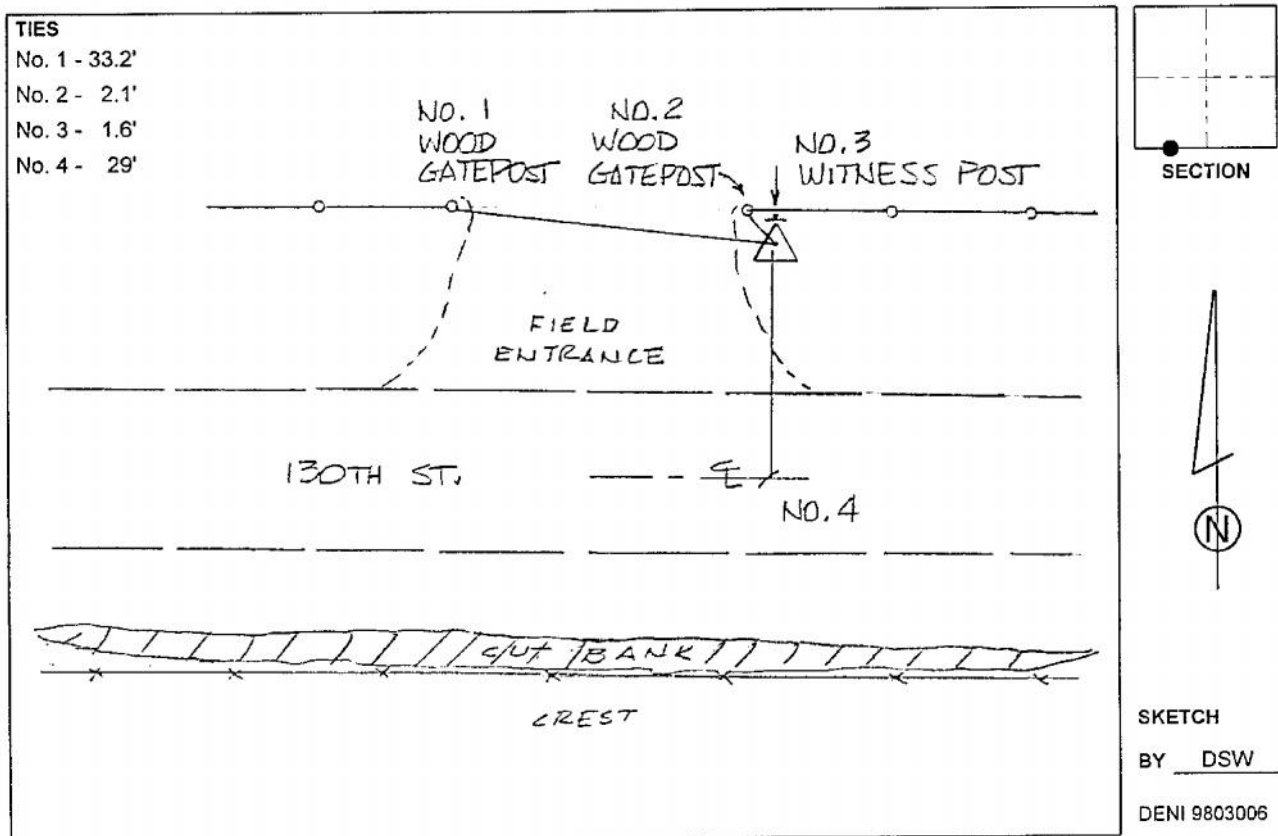
IaRCS Zone 4 Northing: **8596116.953sft**

Easting: **14240864.356sft**

Mapping Angle: **-00° 38' 59"**

Combination Scale Factor: **0.999988154**

Monument Type: 3-1/4" aluminum cap on aluminum rod in 6" PVC pipe with aluminum access cover.



This document was prepared by Dan Corbin, Inc. on March 6, 2015 for Woodbury County, Iowa.