

Woodbury County, Iowa

Horizontal Datum: **NAD 83(2011)** - Vertical Datum: **NAVD 1988**

Iowa State Plane North Zone (1401)

Iowa Regional Coordinate System Zone 4 Sioux City-Iowa Falls LCC

US Survey Feet

2015

Point Name: **8019**

GPS No. (1998): **8019**

Designation: 884301 1 (Set by DENI Associates in 1998)

NAD 83(NA2011) Latitude: **N42°28'27.69819"**

Longitude: **W95°47'15.15865"**

NAVD 88 Ortho Height: **1124.890sft**

Ellip. Ht: **1035.074sft**

Geoid09

Iowa North Zone (1401) Northing: **3644260.797sft**

Easting: **4304195.789sft**

Mapping Angle: **-1°33'01"**

Combination Scale Factor: **0.999901647**

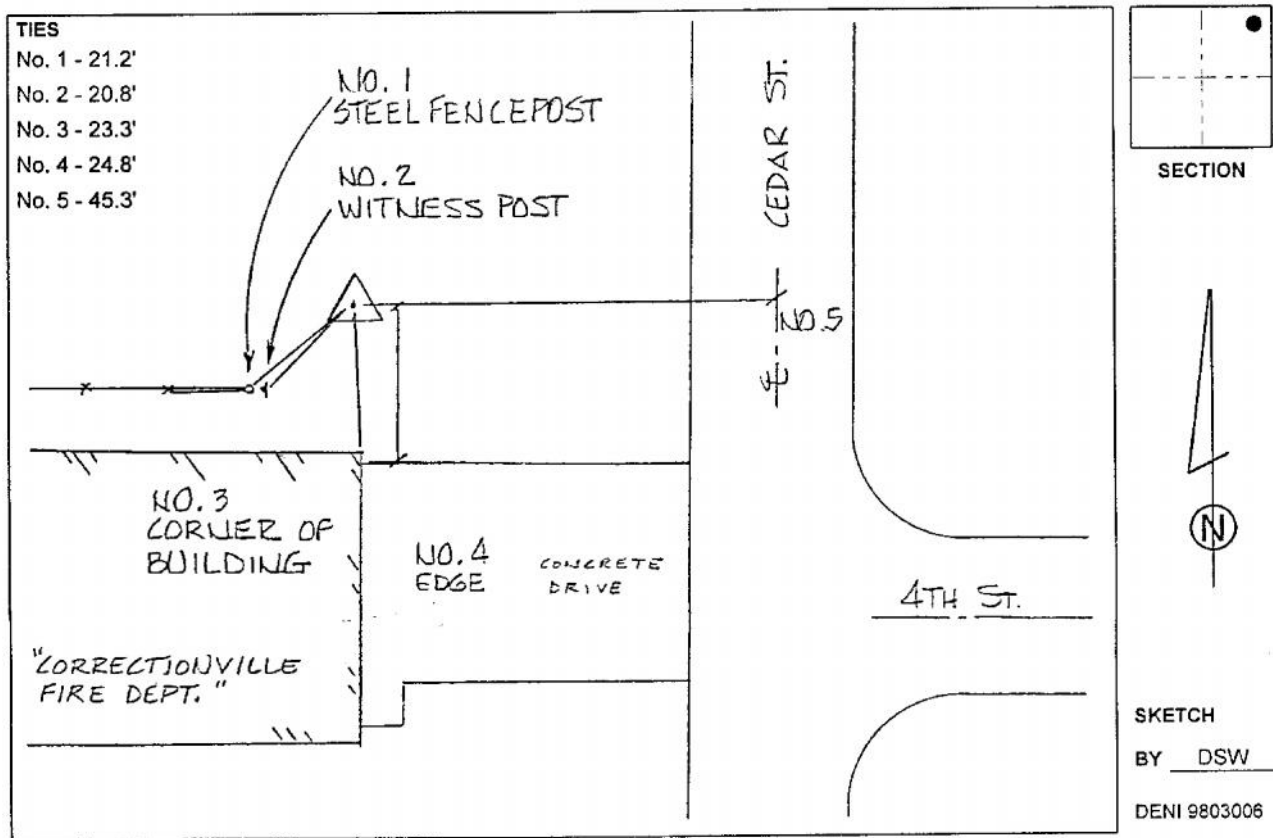
IaRCS Zone 4 Northing: **8579955.945sft**

Easting: **14242555.858sft**

Mapping Angle: **-00° 38' 42"**

Combination Scale Factor: **0.999995958**

Monument Type: 3-1/4" aluminum cap on aluminum rod in 6" PVC pipe with aluminum access cover.



This document was prepared by Dan Corbin, Inc. on March 6, 2015 for Woodbury County, Iowa.