

Woodbury County, Iowa

Horizontal Datum: **NAD 83(2011)** - Vertical Datum: **NAVD 1988**

Iowa State Plane North Zone (1401)

Iowa Regional Coordinate System Zone 4 Sioux City-Iowa Falls LCC

US Survey Feet

2015

Point Name: **8020**

GPS No. (1998): **8020**

Designation: 884313 2 (Set by DENI Associates in 1998)

NAD 83(NA2011) Latitude: **N42°25'43.75465"**

Longitude: **W95°47'11.88397"**

NAVD 88 Ortho Height: **1369.870sft**

Ellip. Ht: **1279.947sft**

Geoid09

Iowa North Zone (1401) Northing: **3627664.388sft**

Easting: **4303992.263sft**

Mapping Angle: **-1°32'59"**

Combination Scale Factor: **0.999892945**

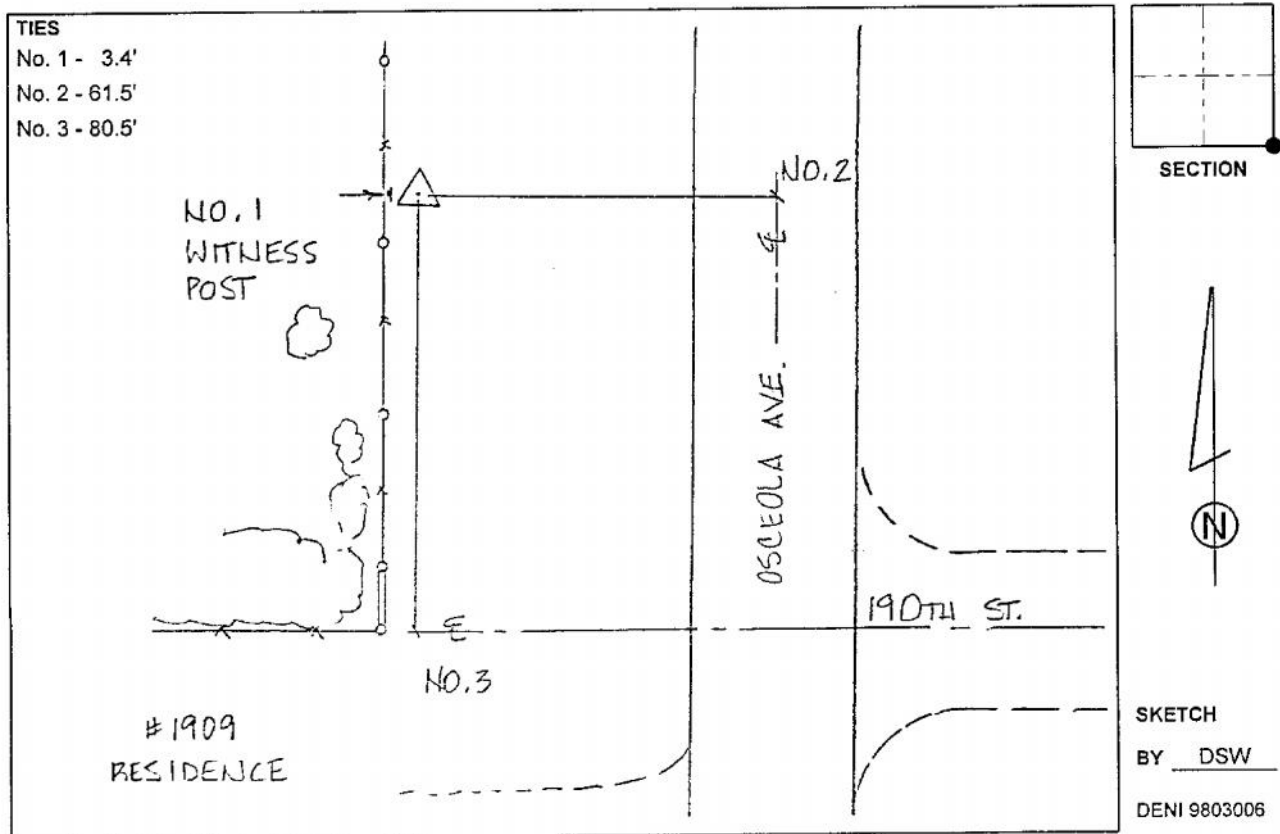
IaRCS Zone 4 Northing: **8563356.839sft**

Easting: **14242614.585sft**

Mapping Angle: **-00° 38' 40"**

Combination Scale Factor: **0.999985360**

Monument Type: 3-1/4" aluminum cap on aluminum rod in 6" PVC pipe with aluminum access cover.



This document was prepared by Dan Corbin, Inc. on March 6, 2015 for Woodbury County, Iowa.