

**Woodbury County, Iowa**

Horizontal Datum: **NAD 83(2011)** - Vertical Datum: **NAVD 1988**

Iowa State Plane North Zone (1401)

Iowa Regional Coordinate System Zone 4 Sioux City-Iowa Falls LCC

US Survey Feet

**2015**

Point Name: **8022**

GPS No. (1998): **8022**

**Designation:** 874324 1 (Set by DENI Associates in 1998)

NAD 83(NA2011) Latitude: **N42°20'30.61334"**

Longitude: **W95°47'13.20962"**

NAVD 88 Ortho Height: **1295.730sft**

Ellip. Ht: **1205.515sft**

**Geoid09**

Iowa North Zone (1401) Northing: **3595979.900sft**

Easting: **4303035.453sft**

Mapping Angle: **-1°33'00"**

Combination Scale Factor: **0.999903931**

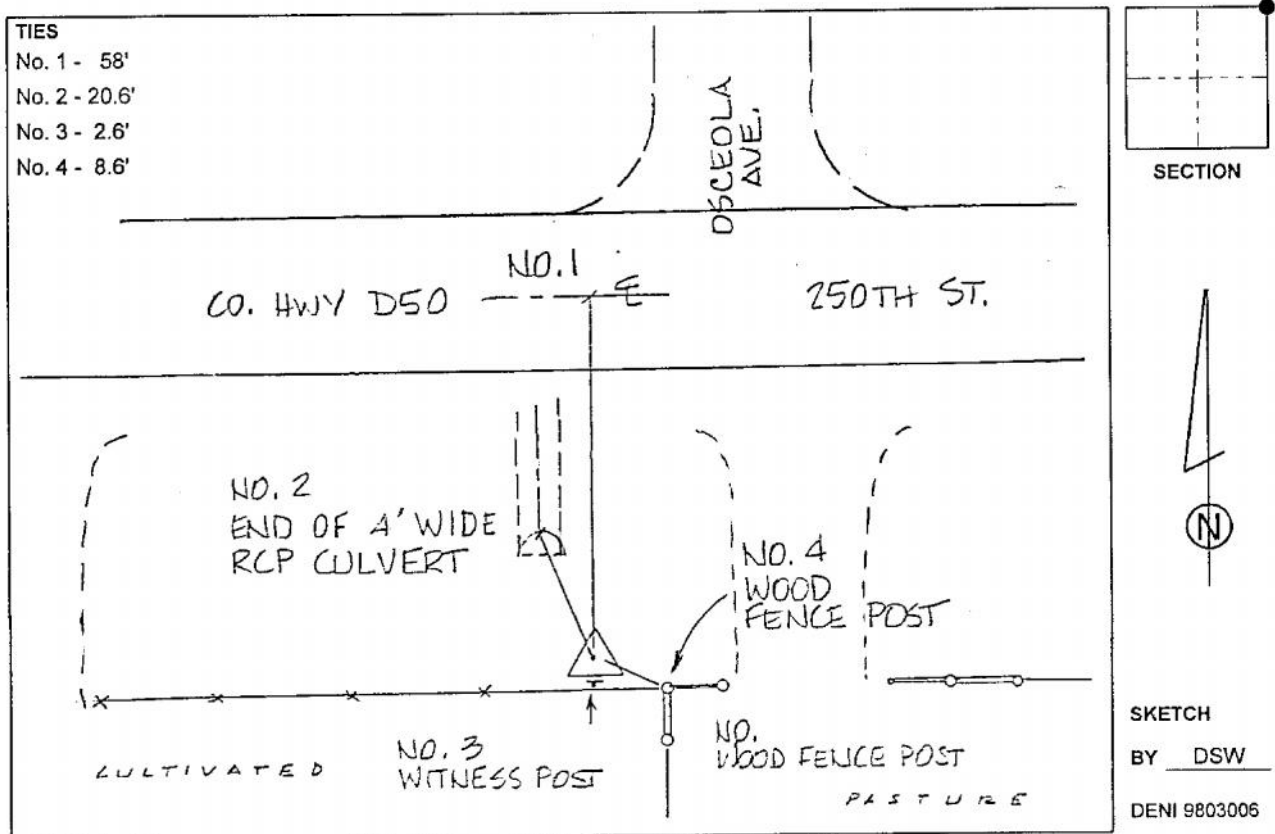
IaRCS Zone 4 Northing: **8531658.309sft**

Easting: **14242158.465sft**

Mapping Angle: **-00° 38' 41"**

Combination Scale Factor: **0.999992826**

**Monument Type:** 3-1/4" aluminum cap on aluminum rod in 6" PVC pipe with aluminum access cover.



*This document was prepared by Dan Corbin, Inc. on March 6, 2015 for Woodbury County, Iowa.*