

Woodbury County, Iowa

Horizontal Datum: **NAD 83(2011)** - Vertical Datum: **NAVD 1988**

Iowa State Plane North Zone (1401)

Iowa Regional Coordinate System Zone 4 Sioux City-Iowa Falls LCC

US Survey Feet

2015

Point Name: **8023**

GPS No. (1998): **8023**

Designation: 864301 1 (Set by DENI Associates in 1998)

NAD 83(NA2011) Latitude: **N42°17'54.32117"**

Longitude: **W95°47'13.64193"**

NAVD 88 Ortho Height: **1412.430sft**

Ellip. Ht: **1322.004sft**

Geoid09

Iowa North Zone (1401) Northing: **3580165.455sft**

Easting: **4302575.026sft**

Mapping Angle: **-1°33'00"**

Combination Scale Factor: **0.999902939**

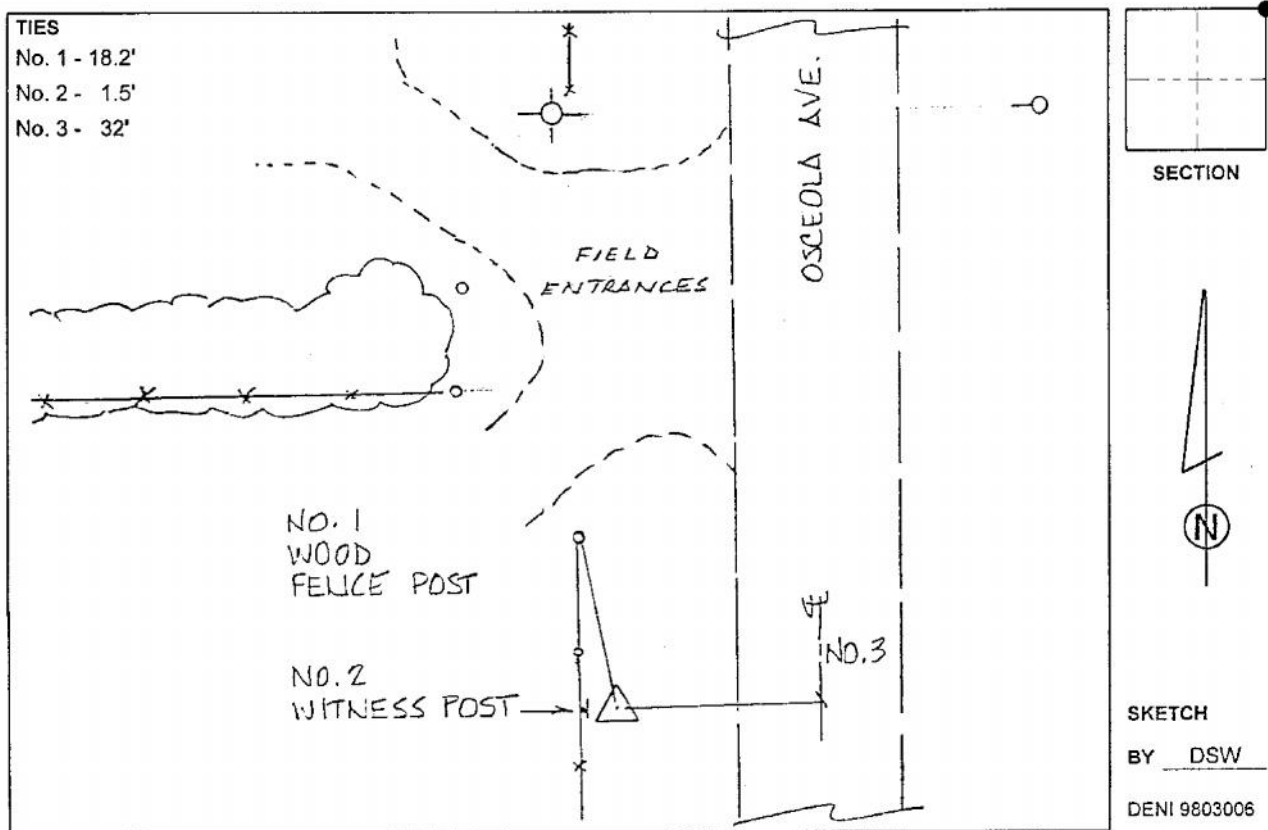
IaRCS Zone 4 Northing: **8515837.167sft**

Easting: **14241947.944sft**

Mapping Angle: **-00° 38' 41"**

Combination Scale Factor: **0.999990052**

Monument Type: 3-1/4" aluminum cap on aluminum rod in 6" PVC pipe with aluminum access cover.



This document was prepared by Dan Corbin, Inc. on March 6, 2015 for Woodbury County, Iowa.