

**Woodbury County, Iowa**

Horizontal Datum: **NAD 83(2011)** - Vertical Datum: **NAVD 1988**  
Iowa State Plane North Zone (1401)  
Iowa Regional Coordinate System Zone 4 Sioux City-Iowa Falls LCC  
US Survey Feet  
**2015**

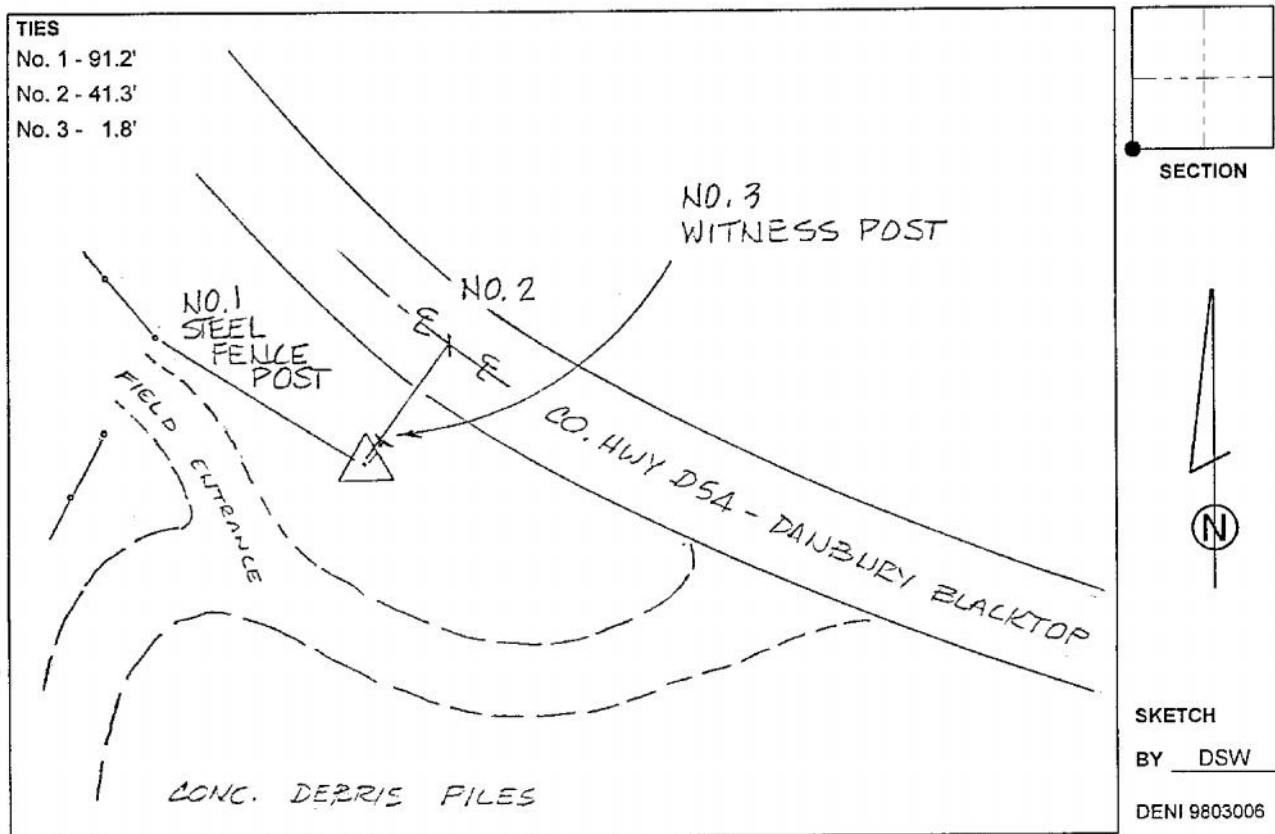
Point Name: **8027** GPS No. (1998): **8027**  
**Designation:** 864315 3 (Set by DENI Associates in 1998)

NAD 83(NA2011) Latitude: **N42°15'18.42500"** Longitude: **W95°50'41.77775"**  
NAVD 88 Ortho Height: **1337.020sft** Ellip. Ht: **1246.839sft** **Geoid09**

Iowa North Zone (1401) Northing: **3564818.995sft** Easting: **4286502.009sft**  
Mapping Angle: **-1°35'21"** Combination Scale Factor: **0.999911646**

IaRCS Zone 4 Northing: **8500237.308sft** Easting: **14226118.049sft**  
Mapping Angle: **-00° 41' 02"** Combination Scale Factor: **0.999997016**

**Monument Type:** 3-1/4" aluminum cap on aluminum rod in 6" PVC pipe with aluminum access cover.



*This document was prepared by Dan Corbin, Inc. on March 6, 2015 for Woodbury County, Iowa.*