

**Woodbury County, Iowa**

Horizontal Datum: **NAD 83(2011)** - Vertical Datum: **NAVD 1988**

Iowa State Plane North Zone (1401)

Iowa Regional Coordinate System Zone 4 Sioux City-Iowa Falls LCC

US Survey Feet

**2015**

Point Name: **8028**

GPS No. (1998): **8028**

**Designation:** 864303 4 (Set by DENI Associates in 1998)

NAD 83(NA2011) Latitude: **N42°17'51.84940"**

Longitude: **W95°50'43.45486"**

NAVD 88 Ortho Height: **1212.600sft**

Ellip. Ht: **1122.678sft**

**Geoid09**

Iowa North Zone (1401) Northing: **3580347.289sft**

Easting: **4286806.760sft**

Mapping Angle: **-1°35'23"**

Combination Scale Factor: **0.999912526**

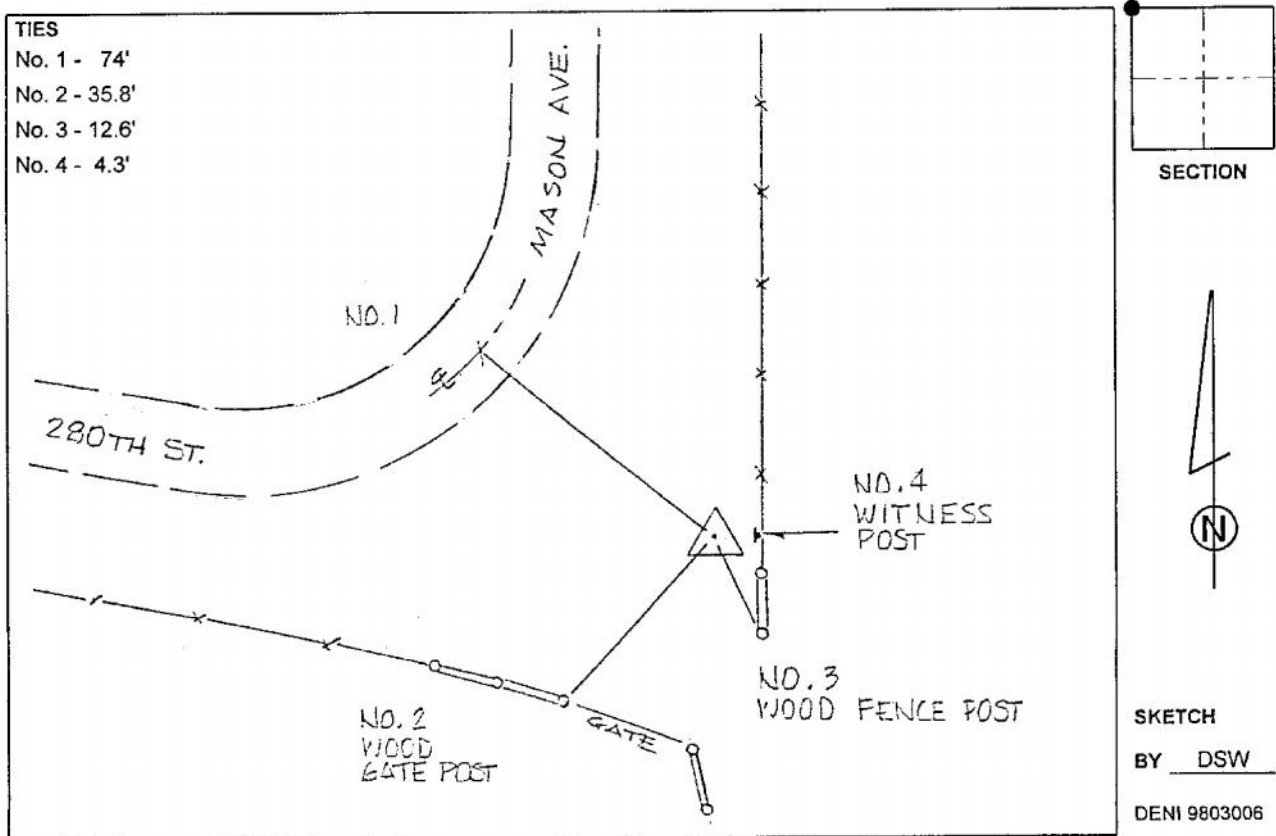
IaRCS Zone 4 Northing: **8515769.821sft**

Easting: **14226177.395sft**

Mapping Angle: **-00° 41' 03"**

Combination Scale Factor: **0.999999646**

**Monument Type:** 3-1/4" aluminum cap on aluminum rod in 6" PVC pipe with aluminum access cover.



*This document was prepared by Dan Corbin, Inc. on March 6, 2015 for Woodbury County, Iowa.*