

**Woodbury County, Iowa**

Horizontal Datum: **NAD 83(2011)** - Vertical Datum: **NAVD 1988**

Iowa State Plane North Zone (1401)

Iowa Regional Coordinate System Zone 4 Sioux City-Iowa Falls LCC

US Survey Feet

**2015**

Point Name: **8029**

GPS No. (1998): **8029**

**Designation:** 874315 3 (Set by DENI Associates in 1998)

NAD 83(NA2011) Latitude: **N42°20'31.89962"**

Longitude: **W95°50'40.86698"**

NAVD 88 Ortho Height: **1352.870sft**

Ellip. Ht: **1263.150sft**

**Geoid09**

Iowa North Zone (1401) Northing: **3596537.197sft**

Easting: **4287450.455sft**

Mapping Angle: **-1°35'21"**

Combination Scale Factor: **0.999901146**

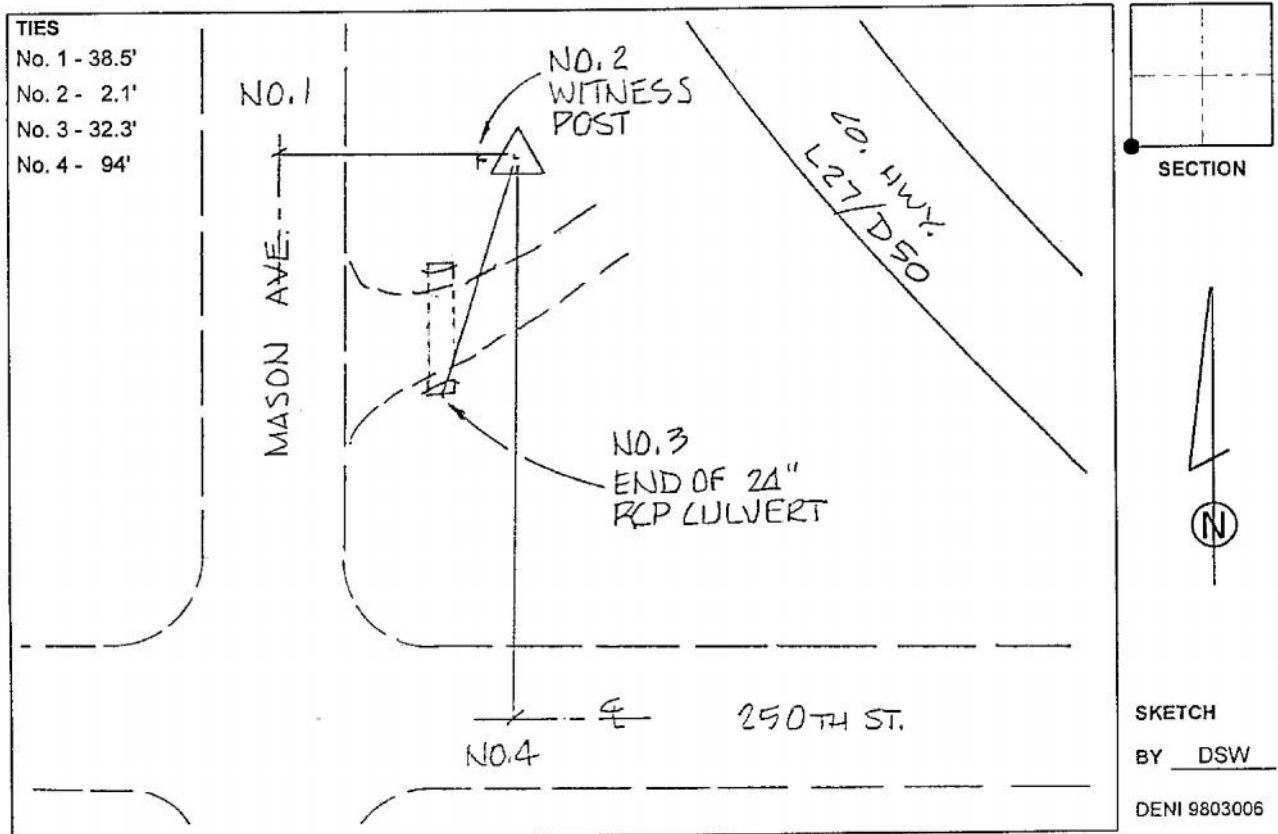
IaRCS Zone 4 Northing: **8531969.308sft**

Easting: **14226565.217sft**

Mapping Angle: **-00° 41' 01"**

Combination Scale Factor: **0.999990045**

**Monument Type:** 3-1/4" aluminum cap on aluminum rod in 6" PVC pipe with aluminum access cover.



*This document was prepared by Dan Corbin, Inc. on March 6, 2015 for Woodbury County, Iowa.*