

Woodbury County, Iowa

Horizontal Datum: **NAD 83(2011)** - Vertical Datum: **NAVD 1988**

Iowa State Plane North Zone (1401)

Iowa Regional Coordinate System Zone 4 Sioux City-Iowa Falls LCC

US Survey Feet

2015

Point Name: **8030**

GPS No. (1998): **8030**

Designation: 884333 2 (Set by DENI Associates in 1998)

NAD 83(NA2011) Latitude: **N42°23'07.47629"**

Longitude: **W95°51'06.76478"**

NAVD 88 Ortho Height: **1120.510sft**

Ellip. Ht: **1031.011sft**

Geoid09

Iowa North Zone (1401) Northing: **3612333.856sft**

Easting: **4285944.442sft**

Mapping Angle: **-1°35'38"**

Combination Scale Factor: **0.999908246**

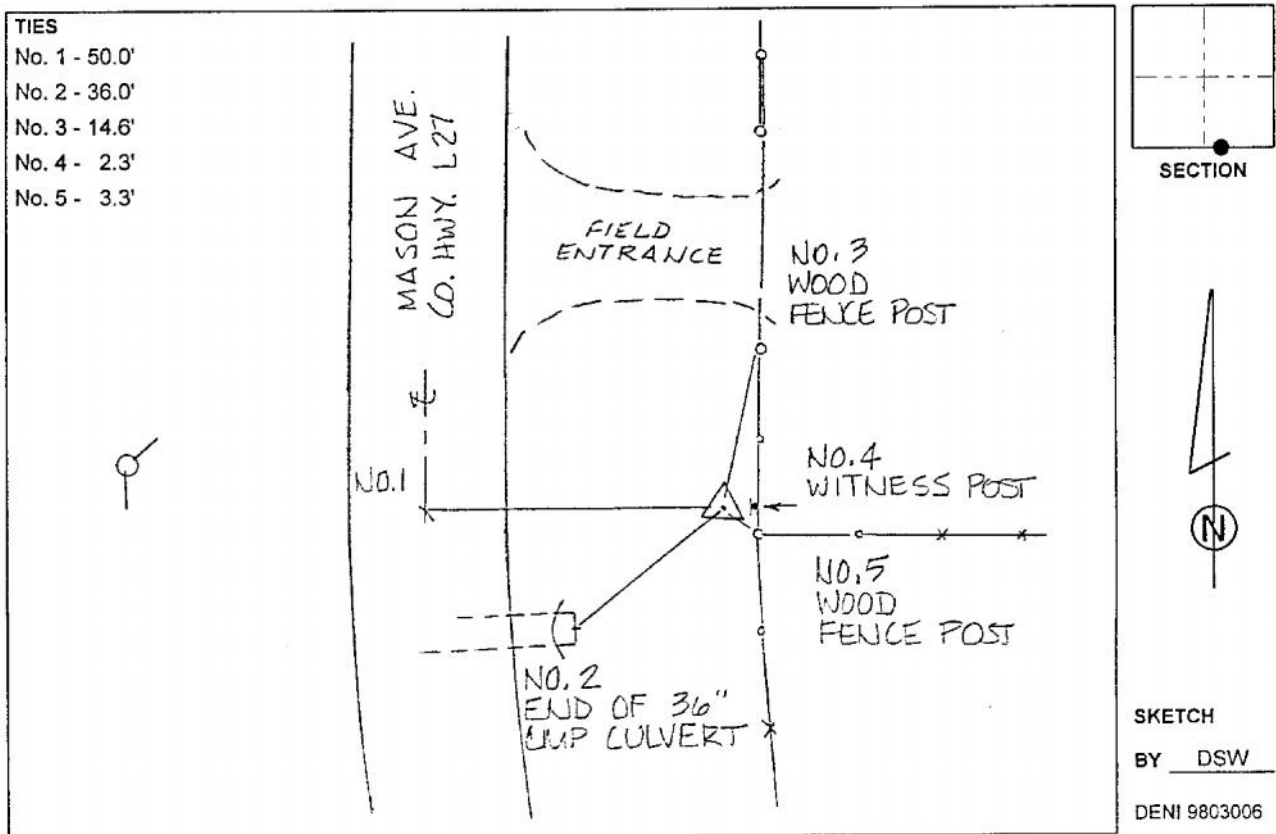
laRCS Zone 4 Northing: **8547741.617sft**

Easting: **14224809.619sft**

Mapping Angle: **-00° 41' 19"**

Combination Scale Factor: **0.999998942**

Monument Type: 3-1/4" aluminum cap on aluminum rod in 6" PVC pipe with aluminum access cover.



This document was prepared by Dan Corbin, Inc. on March 6, 2015 for Woodbury County, Iowa.