

Woodbury County, Iowa

Horizontal Datum: **NAD 83(2011)** - Vertical Datum: **NAVD 1988**

Iowa State Plane North Zone (1401)

Iowa Regional Coordinate System Zone 4 Sioux City-Iowa Falls LCC

US Survey Feet

2015

Point Name: **8031**

GPS No. (1998): **8031**

Designation: 884321 1 (Set by DENI Associates in 1998)

NAD 83(NA2011) Latitude: **N42°25'37.83965"**

Longitude: **W95°50'51.96335"**

NAVD 88 Ortho Height: **1105.040sft**

Ellip. Ht: **1015.616sft**

Geoid09

Iowa North Zone (1401) Northing: **3627518.178sft**

Easting: **4287477.441sft**

Mapping Angle: **-1°35'28"**

Combination Scale Factor: **0.999905675**

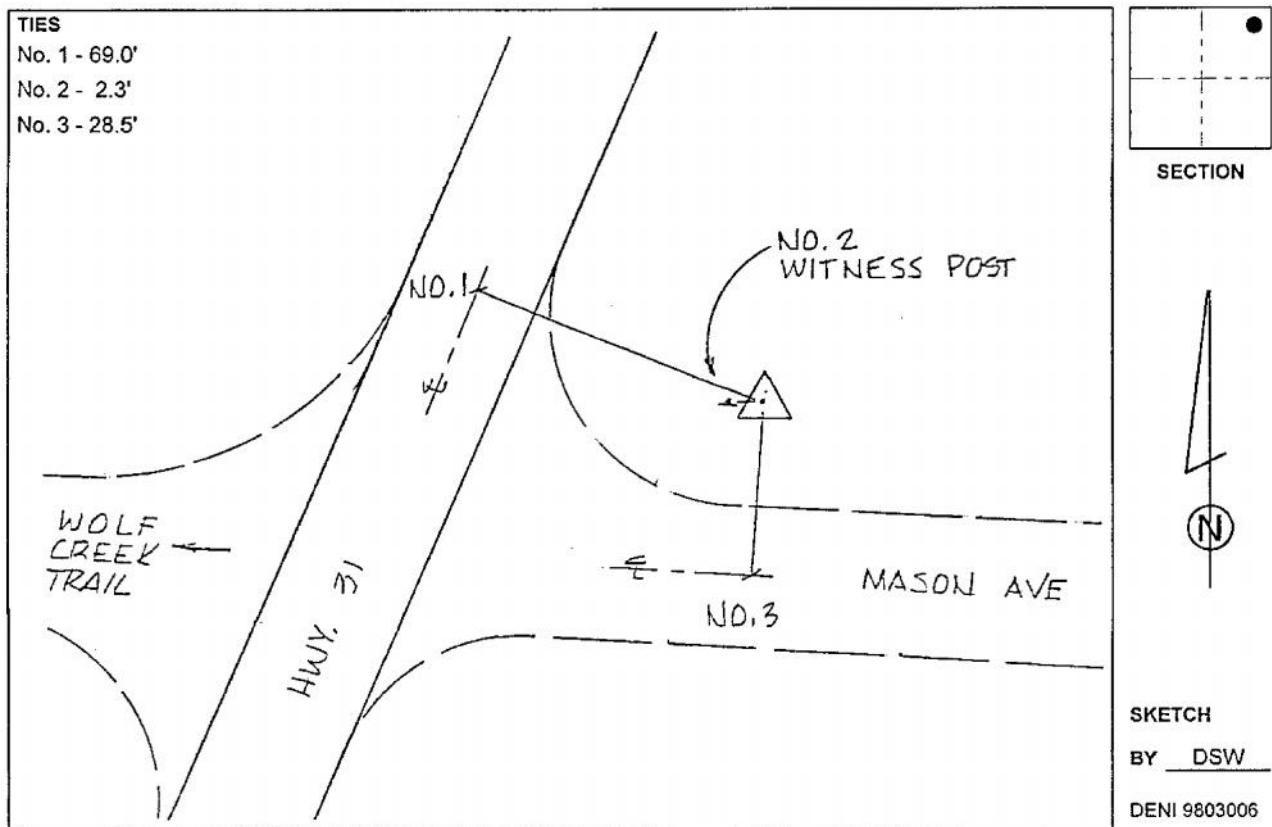
IaRCS Zone 4 Northing: **8562949.662sft**

Easting: **14226102.606sft**

Mapping Angle: **-00° 41' 09"**

Combination Scale Factor: **0.999998071**

Monument Type: 3-1/4" aluminum cap on aluminum rod in 6" PVC pipe with aluminum access cover.



This document was prepared by Dan Corbin, Inc. on March 6, 2015 for Woodbury County, Iowa.