

Woodbury County, Iowa

Horizontal Datum: **NAD 83(2011)** - Vertical Datum: **NAVD 1988**

Iowa State Plane North Zone (1401)

Iowa Regional Coordinate System Zone 4 Sioux City-Iowa Falls LCC

US Survey Feet

2015

Point Name: **8033**

GPS No. (1998): **8033**

Designation: 894219 4 (Set by DENI Associates in 1998)

NAD 83(NA2011) Latitude: **N42°31'06.47771"**

Longitude: **W95°51'10.48332"**

NAVD 88 Ortho Height: **1324.430sft**

Ellip. Ht: **1235.191sft**

Geoid09

Iowa North Zone (1401) Northing: **3660811.687sft**

Easting: **4287014.875sft**

Mapping Angle: **-1°35'41"**

Combination Scale Factor: **0.999889811**

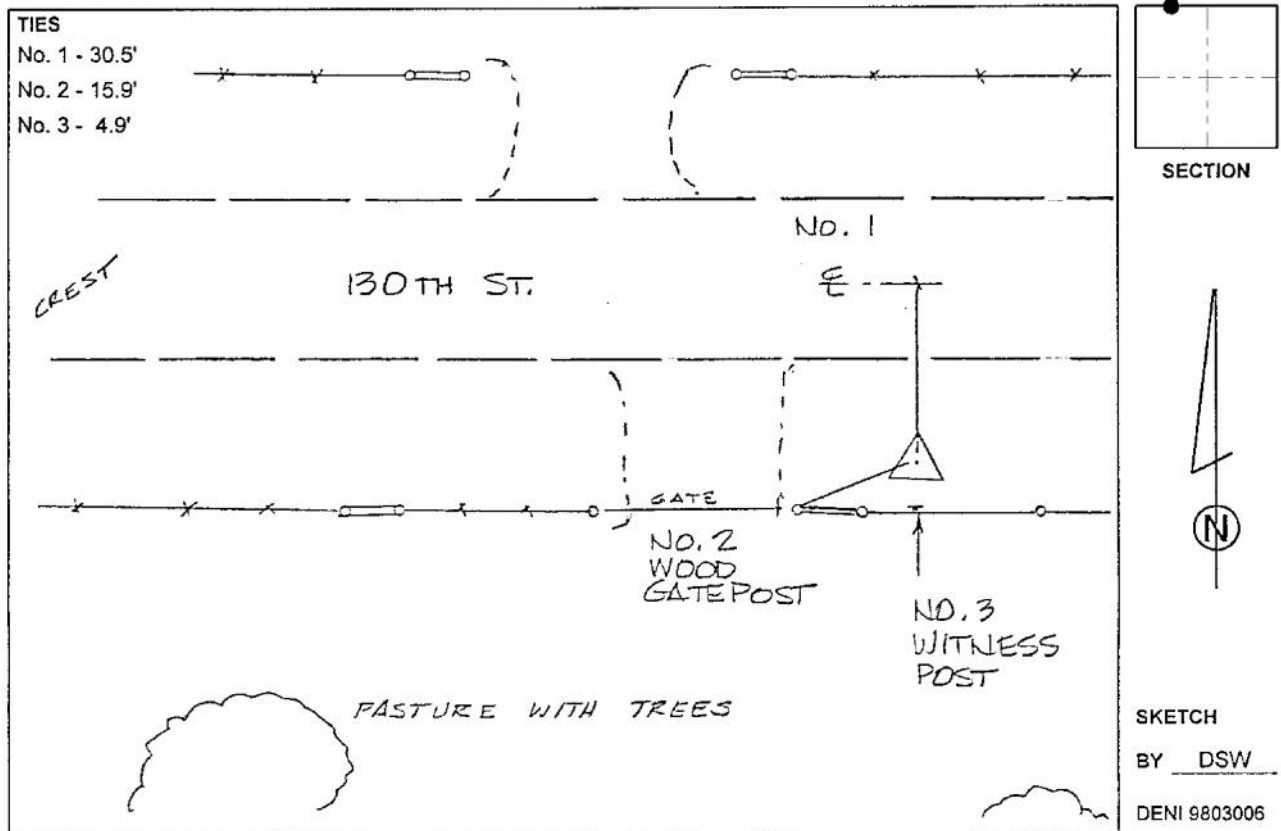
IaRCS Zone 4 Northing: **8596234.848sft**

Easting: **14225113.906sft**

Mapping Angle: **-00° 41' 21"**

Combination Scale Factor: **0.999985881**

Monument Type: 3-1/4" aluminum cap on aluminum rod in 6" PVC pipe with aluminum access cover.



This document was prepared by Dan Corbin, Inc. on March 6, 2015 for Woodbury County, Iowa.