

**Woodbury County, Iowa**

Horizontal Datum: **NAD 83(2011)** - Vertical Datum: **NAVD 1988**

Iowa State Plane North Zone (1401)

Iowa Regional Coordinate System Zone 4 Sioux City-Iowa Falls LCC

US Survey Feet

**2015**

Point Name: **8036**

GPS No. (1998): **8036**

**Designation:** 894315 3 (Set by DENI Associates in 1998)

NAD 83(NA2011) Latitude: **N42°31'06.63891"**

Longitude: **W95°55'05.22347"**

NAVD 88 Ortho Height: **1410.240sft**

Ellip. Ht: **1321.486sft**

**Geoid09**

Iowa North Zone (1401) Northing: **3661323.966sft**

Easting: **4269443.688sft**

Mapping Angle: **-1°38'20"**

Combination Scale Factor: **0.999885692**

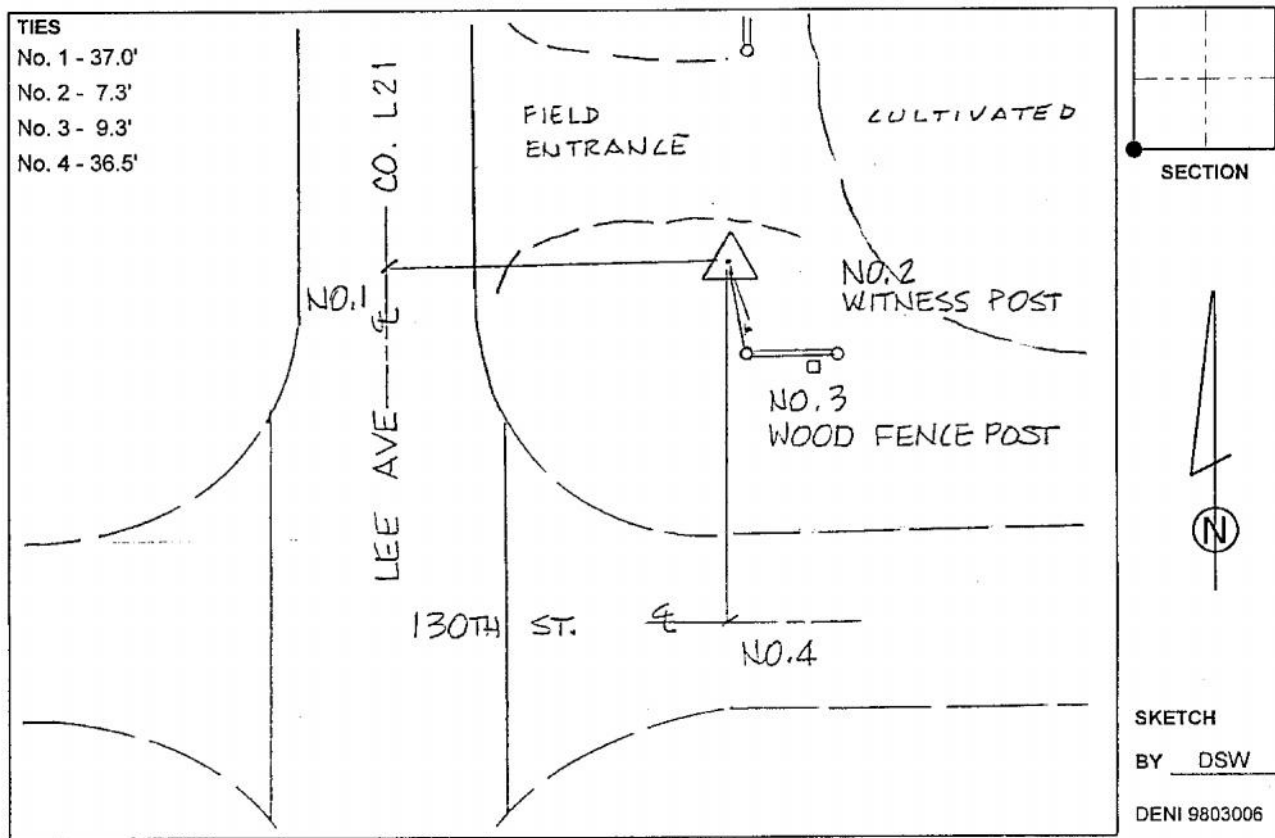
IaRCS Zone 4 Northing: **8596469.411sft**

Easting: **14207535.127sft**

Mapping Angle: **-00° 44' 00"**

Combination Scale Factor: **0.999981749**

**Monument Type:** 3-1/4" aluminum cap on aluminum rod in 6" PVC pipe with aluminum access cover.



*This document was prepared by Dan Corbin, Inc. on March 6, 2015 for Woodbury County, Iowa.*