

Woodbury County, Iowa

Horizontal Datum: **NAD 83(2011)** - Vertical Datum: **NAVD 1988**

Iowa State Plane North Zone (1401)

Iowa Regional Coordinate System Zone 4 Sioux City-Iowa Falls LCC

US Survey Feet

2015

Point Name: **8038**

GPS No. (1998): **8038**

Designation: 884413 2 (Set by DENI Associates in 1998)

NAD 83(NA2011) Latitude: **N42°25'46.95115"**

Longitude: **W95°54'09.39127"**

NAVD 88 Ortho Height: **1393.760sft**

Ellip. Ht: **1304.798sft**

Geoid09

Iowa North Zone (1401) Northing: **3628856.085sft**

Easting: **4272703.410sft**

Mapping Angle: **-1°37'42"**

Combination Scale Factor: **0.999891696**

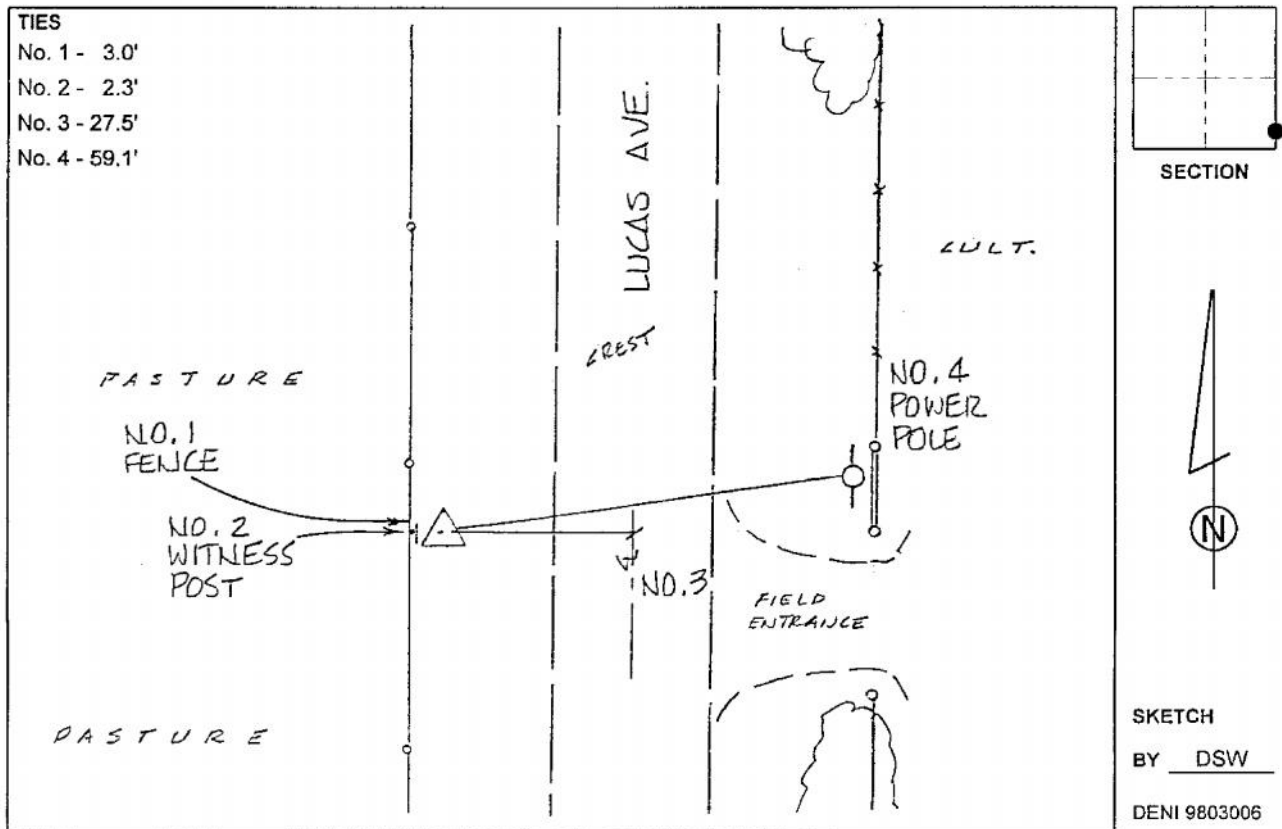
IaRCS Zone 4 Northing: **8564054.037sft**

Easting: **14211307.907sft**

Mapping Angle: **-00° 43' 22"**

Combination Scale Factor: **0.999984142**

Monument Type: 3-1/4" aluminum cap on aluminum rod in 6" PVC pipe with aluminum access cover.



This document was prepared by Dan Corbin, Inc. on March 6, 2015 for Woodbury County, Iowa.