

**Woodbury County, Iowa**

Horizontal Datum: **NAD 83(2011)** - Vertical Datum: **NAVD 1988**

Iowa State Plane North Zone (1401)

Iowa Regional Coordinate System Zone 4 Sioux City-Iowa Falls LCC

US Survey Feet

**2015**

Point Name: **8039**

GPS No. (1998): **8039**

**Designation:** 874306 4 (Set by DENI Associates in 1998)

NAD 83(NA2011) Latitude: **N42°23'07.48735"**

Longitude: **W95°54'06.78741"**

NAVD 88 Ortho Height: **1323.580sft**

Ellip. Ht: **1234.510sft**

**Geoid09**

Iowa North Zone (1401) Northing: **3612714.764sft**

Easting: **4272440.033sft**

Mapping Angle: **-1°37'40"**

Combination Scale Factor: **0.999898538**

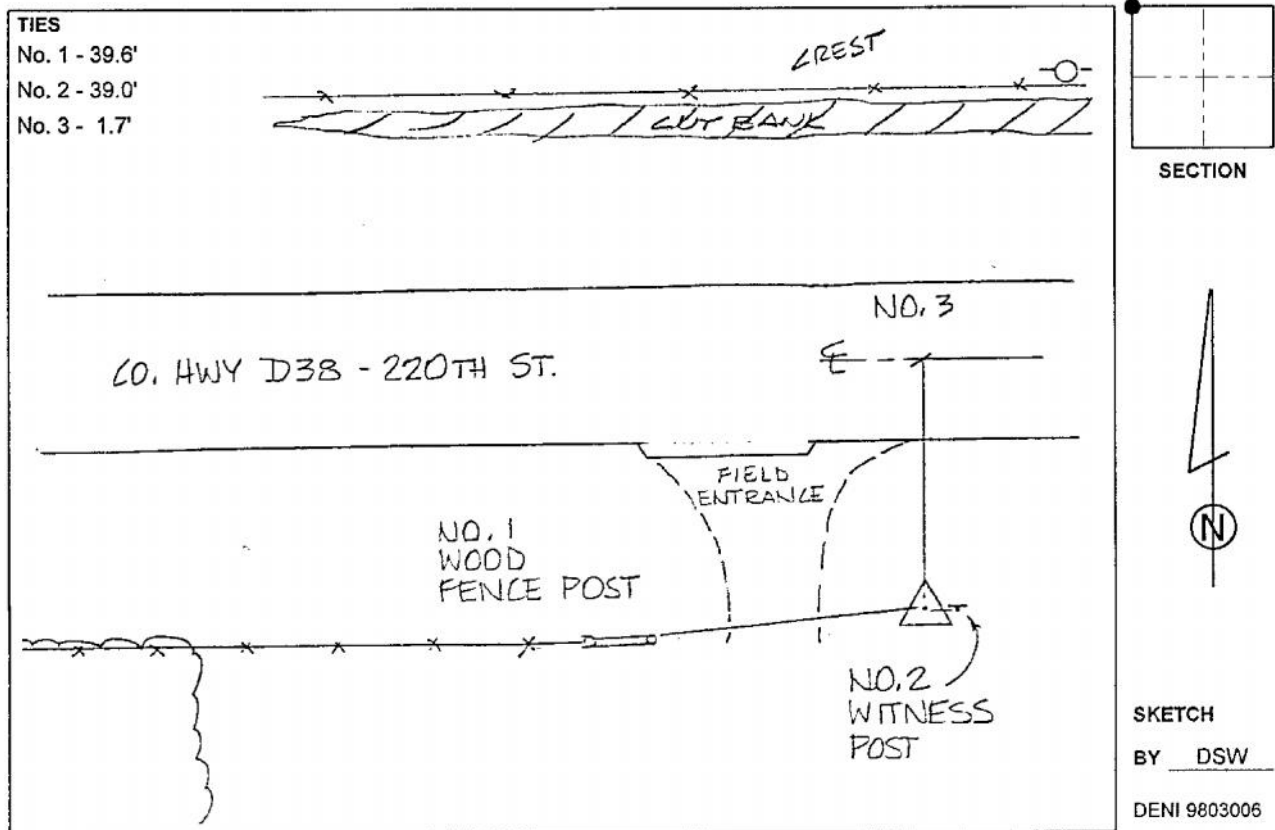
IaRCS Zone 4 Northing: **8547909.088sft**

Easting: **14211299.650sft**

Mapping Angle: **-00° 43' 21"**

Combination Scale Factor: **0.999989197**

**Monument Type:** 3-1/4" aluminum cap on aluminum rod in 6" PVC pipe with aluminum access cover.



*This document was prepared by Dan Corbin, Inc. on March 6, 2015 for Woodbury County, Iowa.*