

**Woodbury County, Iowa**

Horizontal Datum: **NAD 83(2011)** - Vertical Datum: **NAVD 1988**

Iowa State Plane North Zone (1401)

Iowa Regional Coordinate System Zone 4 Sioux City-Iowa Falls LCC

US Survey Feet

**2015**

Point Name: **8040**

GPS No. (1998): **8040**

**Designation:** 874424 1 (Set by DENI Associates in 1998)

NAD 83(NA2011) Latitude: **N42°20'23.72686"**

Longitude: **W95°54'23.08064"**

NAVD 88 Ortho Height: **1164.800sft**

Ellip. Ht: **1075.623sft**

**Geoid09**

Iowa North Zone (1401) Northing: **3596179.078sft**

Easting: **4270745.996sft**

Mapping Angle: **-1°37'51"**

Combination Scale Factor: **0.999910318**

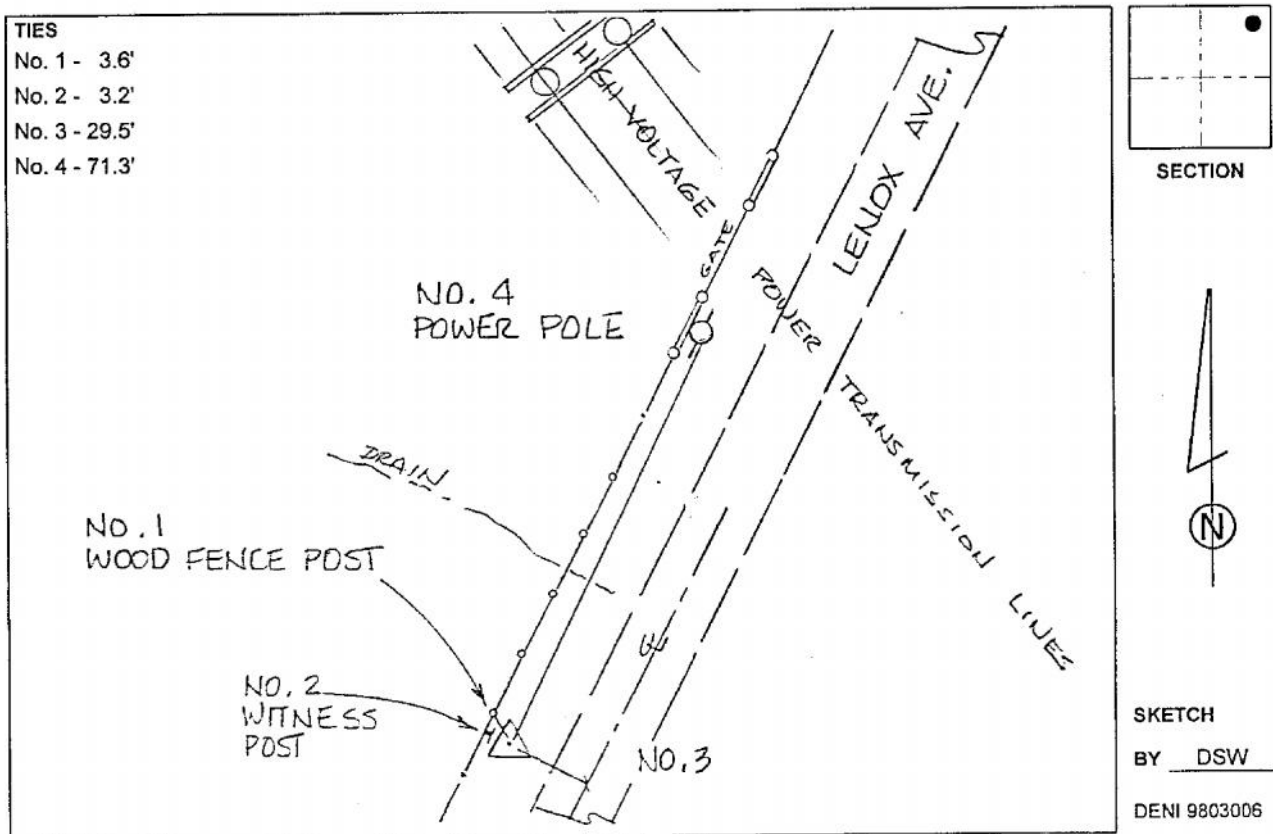
IaRCS Zone 4 Northing: **8531347.206sft**

Easting: **14209867.016sft**

Mapping Angle: **-00° 43' 32"**

Combination Scale Factor: **0.999999158**

**Monument Type:** 3-1/4" aluminum cap on aluminum rod in 6" PVC pipe with aluminum access cover.



*This document was prepared by Dan Corbin, Inc. on March 6, 2015 for Woodbury County, Iowa.*