

Woodbury County, Iowa

Horizontal Datum: **NAD 83(2011)** - Vertical Datum: **NAVD 1988**

Iowa State Plane North Zone (1401)

Iowa Regional Coordinate System Zone 4 Sioux City-Iowa Falls LCC

US Survey Feet

2015

Point Name: **8041**

GPS No. (1998): **8041**

Designation: 874331 3 (Set by DENI Associates in 1998)

NAD 83(NA2011) Latitude: **N42°18'00.86079"**

Longitude: **W95°53'50.05789"**

NAVD 88 Ortho Height: **1088.410sft**

Ellip. Ht: **998.980sft**

Geoid09

Iowa North Zone (1401) Northing: **3581652.424sft**

Easting: **4272814.943sft**

Mapping Angle: **-1°37'29"**

Combination Scale Factor: **0.999918148**

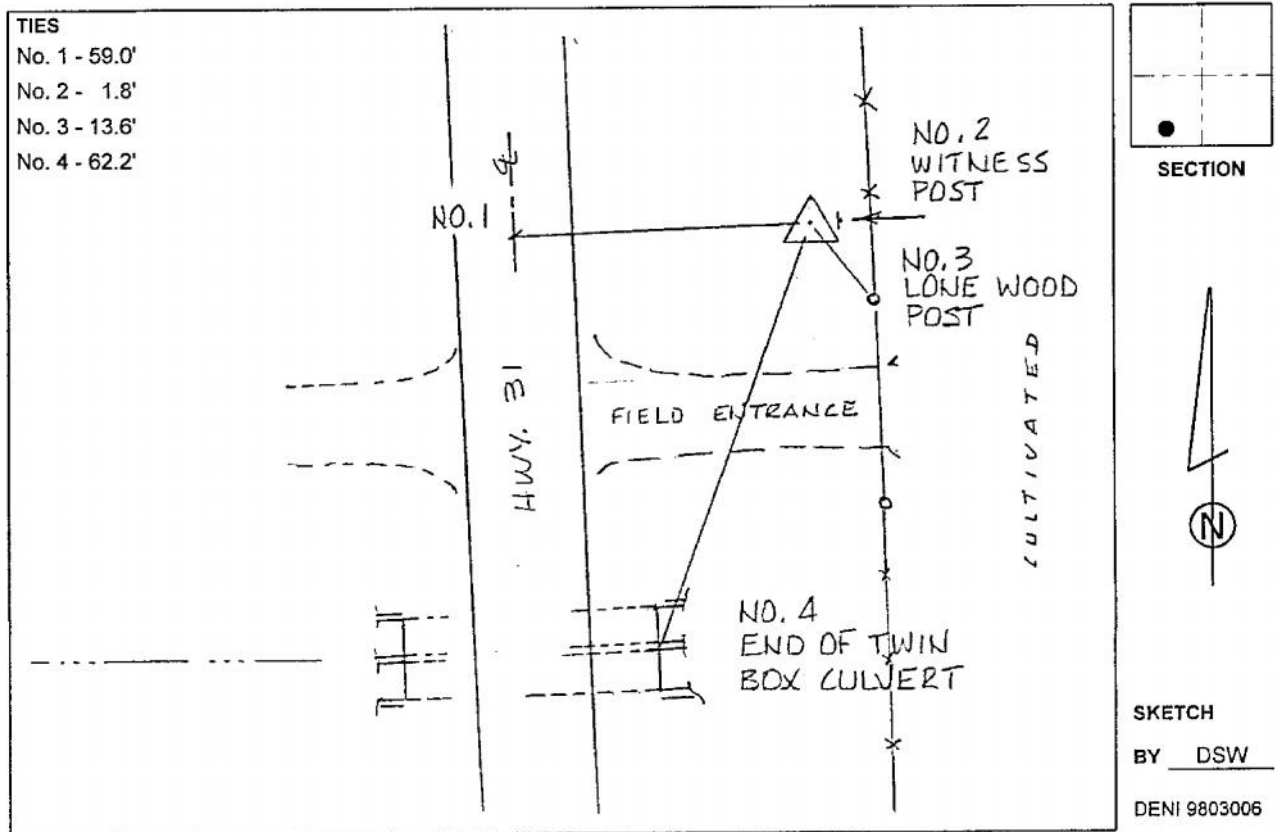
IaRCS Zone 4 Northing: **8516853.783sft**

Easting: **14212165.478sft**

Mapping Angle: **-00° 43' 09"**

Combination Scale Factor: **1.000005392**

Monument Type: 3-1/4" aluminum cap on aluminum rod in 6" PVC pipe with aluminum access cover.



This document was prepared by Dan Corbin, Inc. on March 6, 2015 for Woodbury County, Iowa.