

Woodbury County, Iowa

Horizontal Datum: **NAD 83(2011)** - Vertical Datum: **NAVD 1988**

Iowa State Plane North Zone (1401)

Iowa Regional Coordinate System Zone 4 Sioux City-Iowa Falls LCC

US Survey Feet

2015

Point Name: **8044**

GPS No. (1998): **8044**

Designation: 864433 2 (Set by DENI Associates in 1998)

NAD 83(NA2011) Latitude: **N42°12'43.18625"**

Longitude: **W95°57'59.69095"**

NAVD 88 Ortho Height: **1219.070sft**

Ellip. Ht: **1129.771sft**

Geoid09

Iowa North Zone (1401) Northing: **3550048.301sft**

Easting: **4253125.440sft**

Mapping Angle: **-1°40'18"**

Combination Scale Factor: **0.999922892**

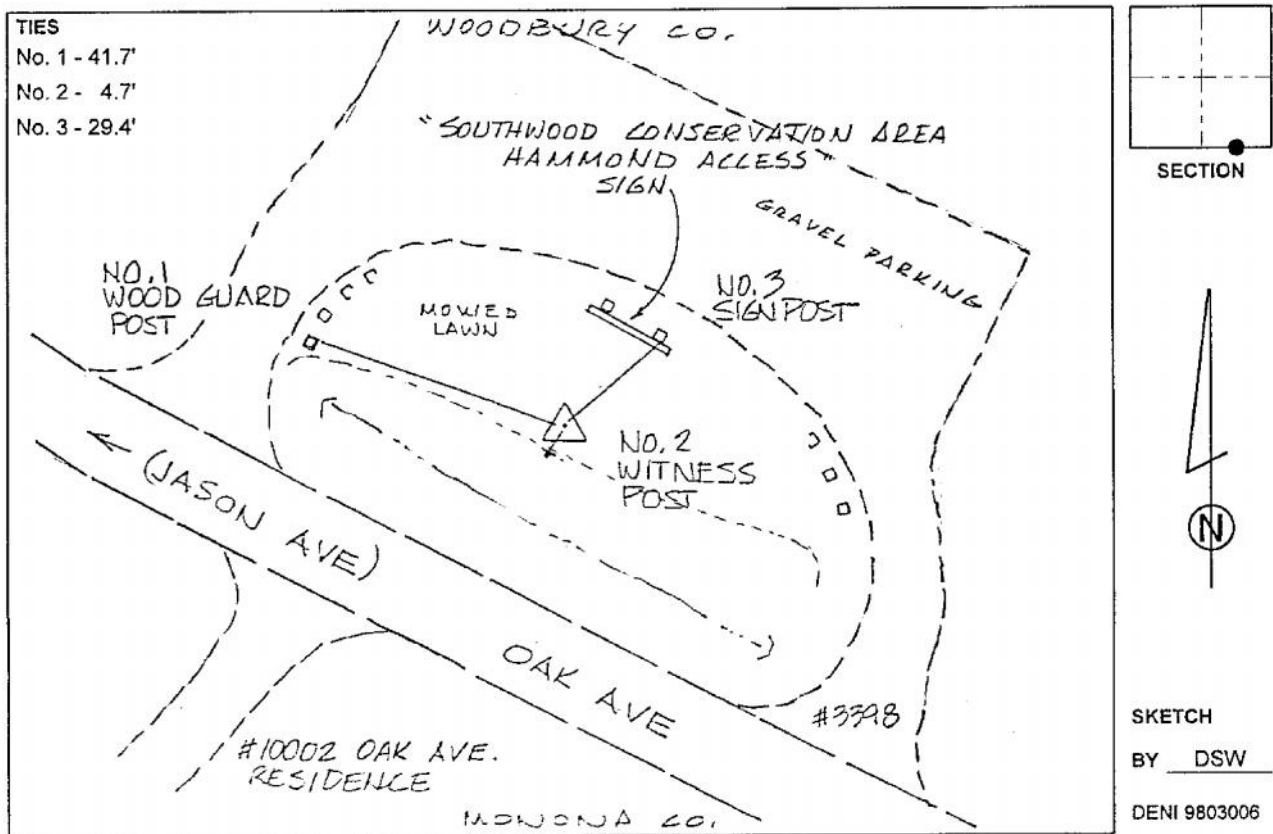
IaRCS Zone 4 Northing: **8484939.696sft**

Easting: **14192976.270sft**

Mapping Angle: **-00° 45' 58"**

Combination Scale Factor: **1.000006536**

Monument Type: 3-1/4" aluminum cap on aluminum rod in 6" PVC pipe with aluminum access cover.



This document was prepared by Dan Corbin, Inc. on March 6, 2015 for Woodbury County, Iowa.