

Woodbury County, Iowa

Horizontal Datum: **NAD 83(2011)** - Vertical Datum: **NAVD 1988**

Iowa State Plane North Zone (1401)

Iowa Regional Coordinate System Zone 4 Sioux City-Iowa Falls LCC

US Survey Feet

2015

Point Name: **8045**

GPS No. (1998): **8045**

Designation: 864421 1 (Set by DENI Associates in 1998)

NAD 83(NA2011) Latitude: **N42°15'12.06785"**

Longitude: **W95°57'40.40919"**

NAVD 88 Ortho Height: **1341.680sft**

Ellip. Ht: **1252.621sft**

Geoid09

Iowa North Zone (1401) Northing: **3565070.514sft**

Easting: **4255014.530sft**

Mapping Angle: **-1°40'05"**

Combination Scale Factor: **0.999911591**

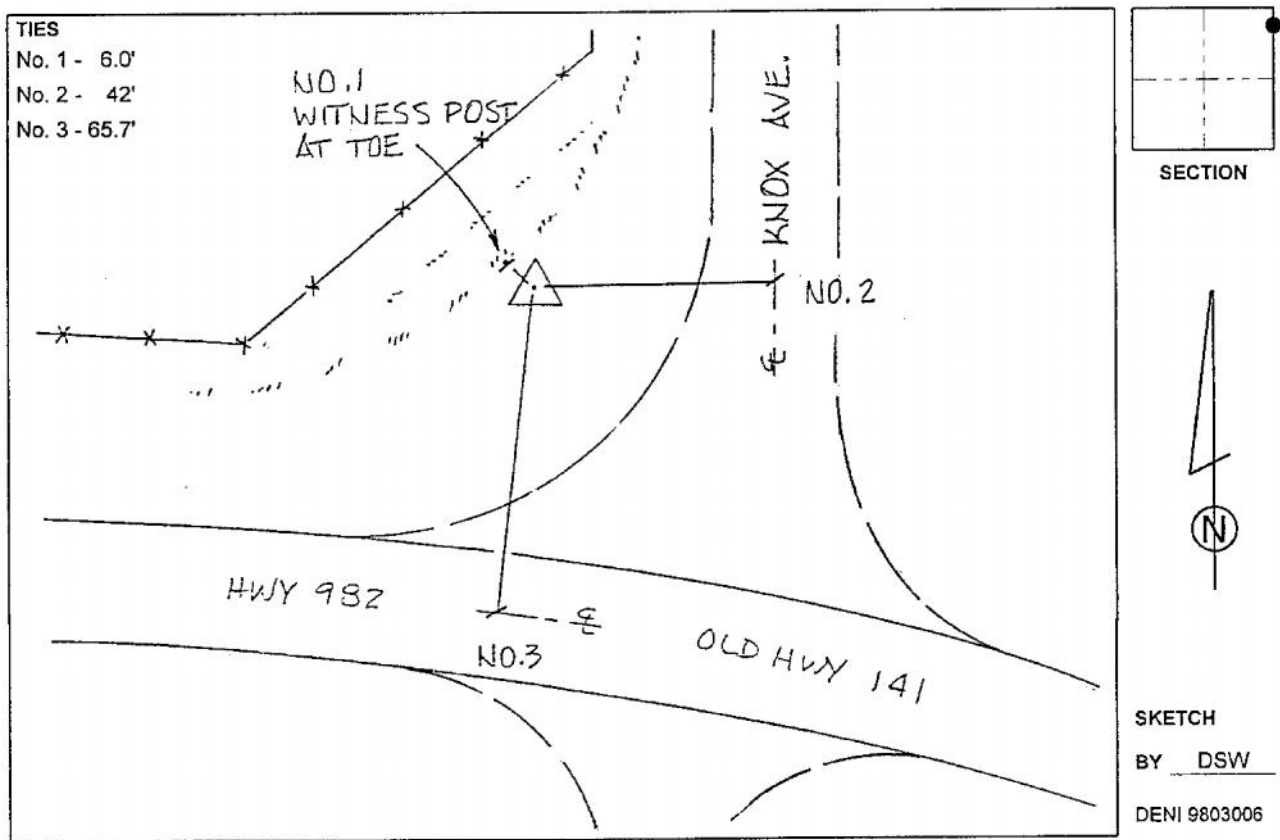
IaRCS Zone 4 Northing: **8499991.165sft**

Easting: **14194627.834sft**

Mapping Angle: **-00° 45' 45"**

Combination Scale Factor: **0.999996888**

Monument Type: 3-1/4" aluminum cap on aluminum rod in 6" PVC pipe with aluminum access cover.



This document was prepared by Dan Corbin, Inc. on March 6, 2015 for Woodbury County, Iowa.