

Woodbury County, Iowa

Horizontal Datum: **NAD 83(2011)** - Vertical Datum: **NAVD 1988**

Iowa State Plane North Zone (1401)

Iowa Regional Coordinate System Zone 4 Sioux City-Iowa Falls LCC

US Survey Feet

2015

Point Name: **8046**

GPS No. (1998): **8046**

Designation: 864403 4 (Set by DENI Associates in 1998)

NAD 83(NA2011) Latitude: **N42°17'54.47294"**

Longitude: **W95°57'24.91631"**

NAVD 88 Ortho Height: **1283.820sft**

Ellip. Ht: **1194.940sft**

Geoid09

Iowa North Zone (1401) Northing: **3581469.551sft**

Easting: **4256656.866sft**

Mapping Angle: **-1°39'55"**

Combination Scale Factor: **0.999908997**

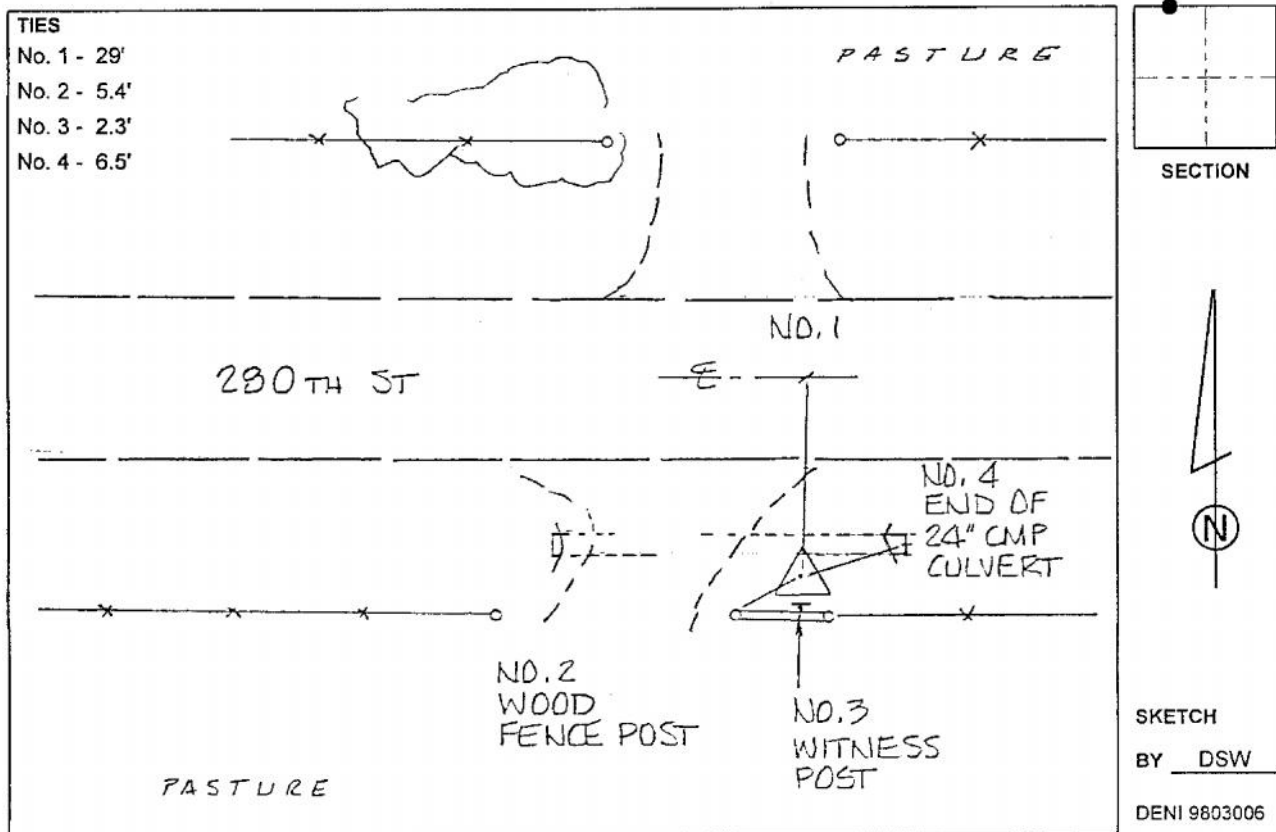
IaRCS Zone 4 Northing: **8516415.530sft**

Easting: **14196010.897sft**

Mapping Angle: **-00° 45' 34"**

Combination Scale Factor: **0.999996133**

Monument Type: 3-1/4" aluminum cap on aluminum rod in 6" PVC pipe with aluminum access cover.



This document was prepared by Dan Corbin, Inc. on March 6, 2015 for Woodbury County, Iowa.