

Woodbury County, Iowa

Horizontal Datum: **NAD 83(2011)** - Vertical Datum: **NAVD 1988**

Iowa State Plane North Zone (1401)

Iowa Regional Coordinate System Zone 4 Sioux City-Iowa Falls LCC

US Survey Feet

2015

Point Name: **8047**

GPS No. (1998): **8047**

Designation: 874422 4 (Set by DENI Associates in 1998)

NAD 83(NA2011) Latitude: **N42°20'29.76160"**

Longitude: **W95°57'41.17508"**

NAVD 88 Ortho Height: **1170.420sft**

Ellip. Ht: **1081.720sft**

Geoid09

Iowa North Zone (1401) Northing: **3597217.955sft**

Easting: **4255893.179sft**

Mapping Angle: **-1°40'06"**

Combination Scale Factor: **0.999909861**

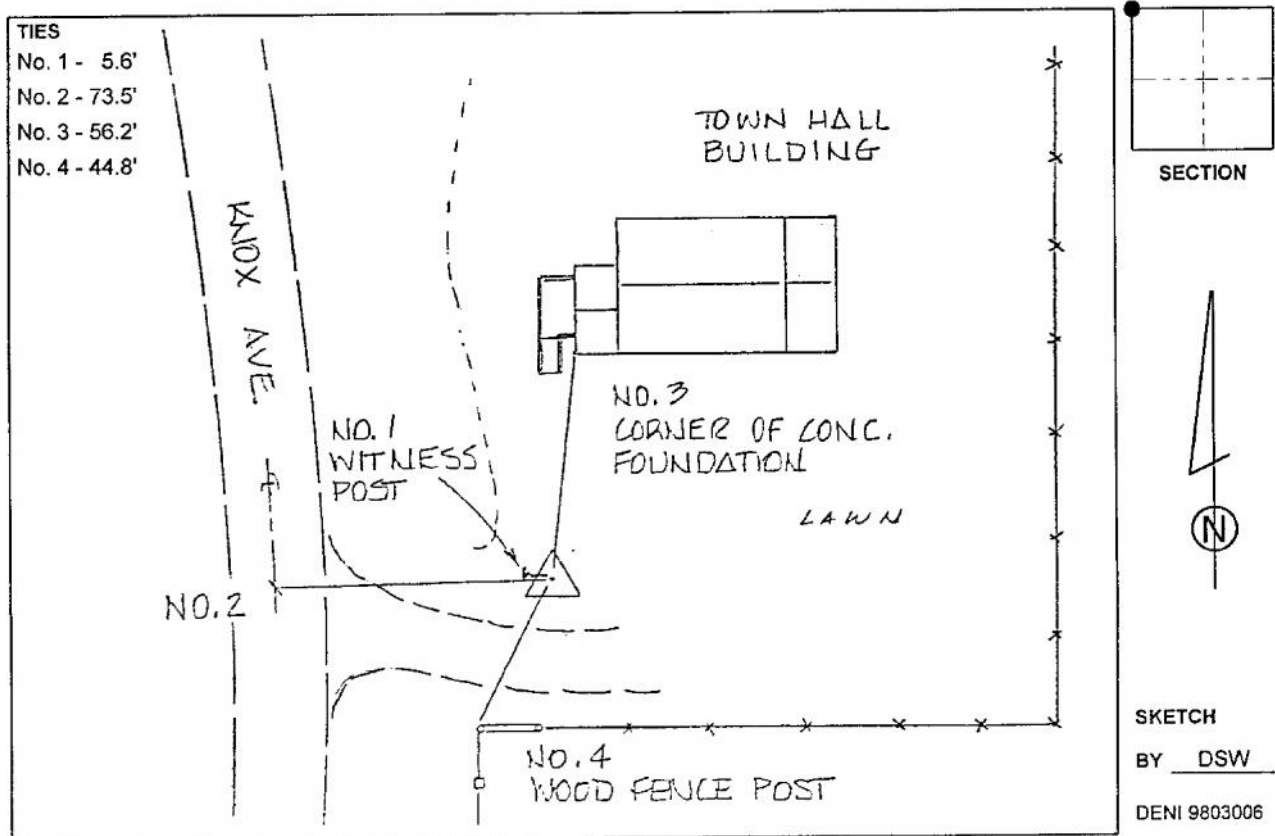
IaRCS Zone 4 Northing: **8532151.286sft**

Easting: **14194998.311sft**

Mapping Angle: **-00° 45' 45"**

Combination Scale Factor: **0.999998768**

Monument Type: 3-1/4" aluminum cap on aluminum rod in 6" PVC pipe with aluminum access cover.



This document was prepared by Dan Corbin, Inc. on March 6, 2015 for Woodbury County, Iowa.