

**Woodbury County, Iowa**

Horizontal Datum: **NAD 83(2011)** - Vertical Datum: **NAVD 1988**

Iowa State Plane North Zone (1401)

Iowa Regional Coordinate System Zone 4 Sioux City-Iowa Falls LCC

US Survey Feet

**2015**

Point Name: **8048**

GPS No. (1998): **8048**

**Designation:** 884434 3 (Set by DENI Associates in 1998)

NAD 83(NA2011) Latitude: **N42°23'08.84101"**

Longitude: **W95°57'35.30580"**

NAVD 88 Ortho Height: **1349.350sft**

Ellip. Ht: **1260.762sft**

**Geoid09**

Iowa North Zone (1401) Northing: **3613301.625sft**

Easting: **4256802.248sft**

Mapping Angle: **-1°40'02"**

Combination Scale Factor: **0.999897253**

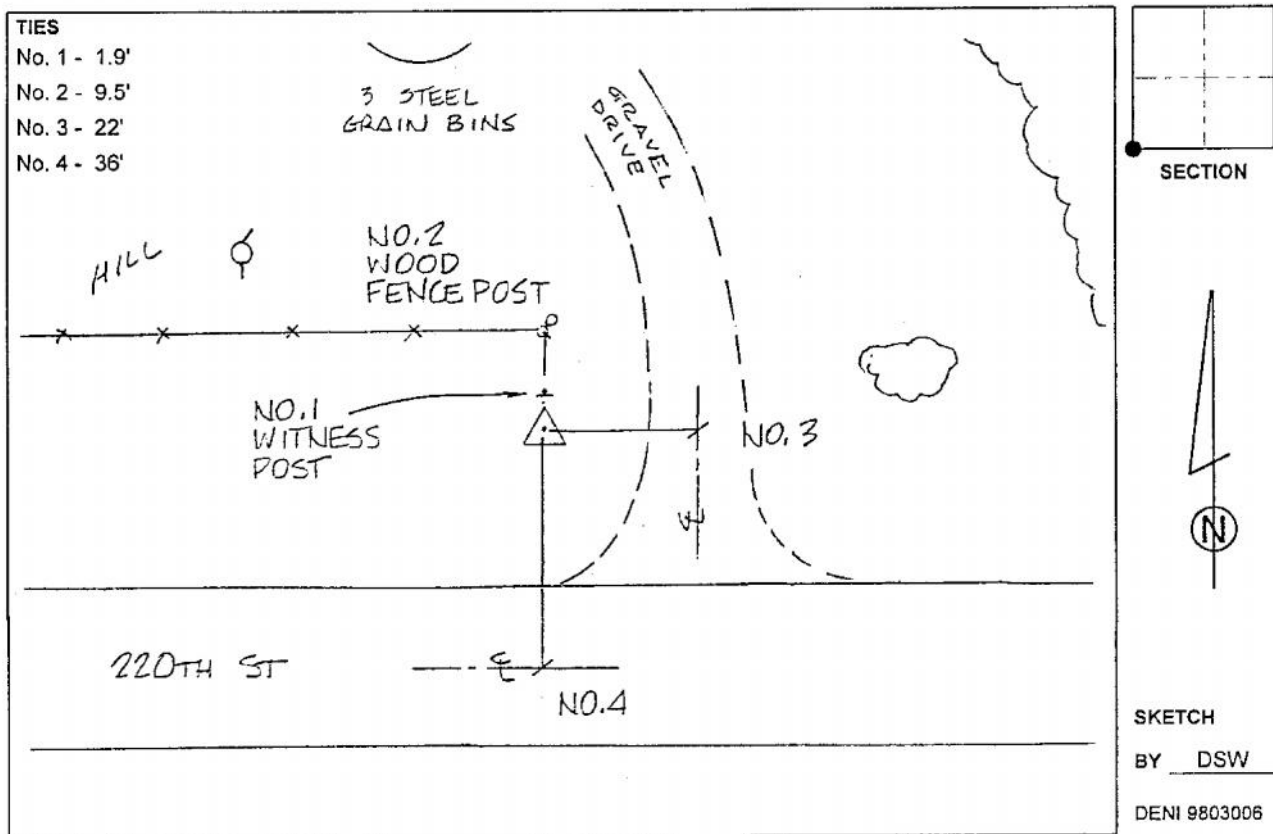
IaRCS Zone 4 Northing: **8548248.763sft**

Easting: **14195653.120sft**

Mapping Angle: **-00° 45' 41"**

Combination Scale Factor: **0.999987923**

**Monument Type:** 3-1/4" aluminum cap on aluminum rod in 6" PVC pipe with aluminum access cover.



*This document was prepared by Dan Corbin, Inc. on March 6, 2015 for Woodbury County, Iowa.*