

Woodbury County, Iowa

Horizontal Datum: **NAD 83(2011)** - Vertical Datum: **NAVD 1988**

Iowa State Plane North Zone (1401)

Iowa Regional Coordinate System Zone 4 Sioux City-Iowa Falls LCC

US Survey Feet

2015

Point Name: **8049 (Replaced by 8126)**

GPS No. (1998): **8049**

Designation: 884416 2 (Set by DENI Associates in 1998)

NAD 83(NA2011) Latitude: **N42°25'45.48778"**

Longitude: **W95°57'47.85947"**

NAVD 88 Ortho Height: **1426.810sft**

Ellip. Ht: **1338.520sft**

Geoid96

Iowa North Zone (1401) Northing: **3629179.440sft**

Easting: **4256322.540sft**

Mapping Angle: **-1°40'10"**

Combination Scale Factor: **0.999953980**

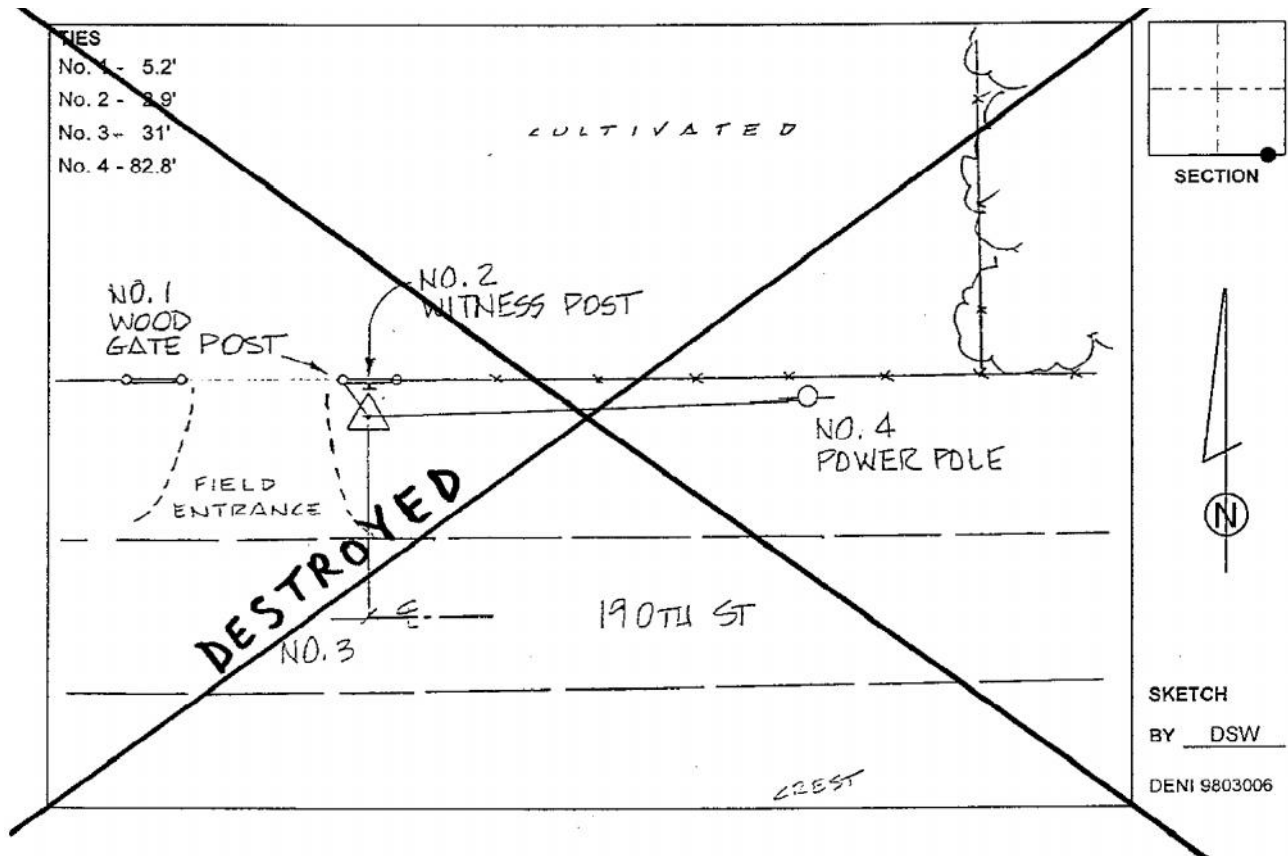
IaRCS Zone 4 Northing: **8564118.475sft**

Easting: **14194922.457sft**

Mapping Angle: **-00° 45' 50"**

Combination Scale Factor: **0.999982540**

Monument Type: 3-1/4" aluminum cap on aluminum rod in 6" PVC pipe with aluminum access cover.



This document was prepared by Dan Corbin, Inc. on March 6, 2015 for Woodbury County, Iowa.