

Woodbury County, Iowa

Horizontal Datum: **NAD 83(2011)** - Vertical Datum: **NAVD 1988**

Iowa State Plane North Zone (1401)

Iowa Regional Coordinate System Zone 4 Sioux City-Iowa Falls LCC

US Survey Feet

2015

Point Name: **8050**

GPS No. (1998): **8050**

Designation: 894331 2 (Set by DENI Associates in 1998)

NAD 83(NA2011) Latitude: **N42°28'30.75907"**

Longitude: **W95°57'52.30981"**

NAVD 88 Ortho Height: **1377.700sft**

Ellip. Ht: **1289.263sft**

Geoid09

Iowa North Zone (1401) Northing: **3645912.311sft**

Easting: **4256476.605sft**

Mapping Angle: **-1°40'13"**

Combination Scale Factor: **0.999889471**

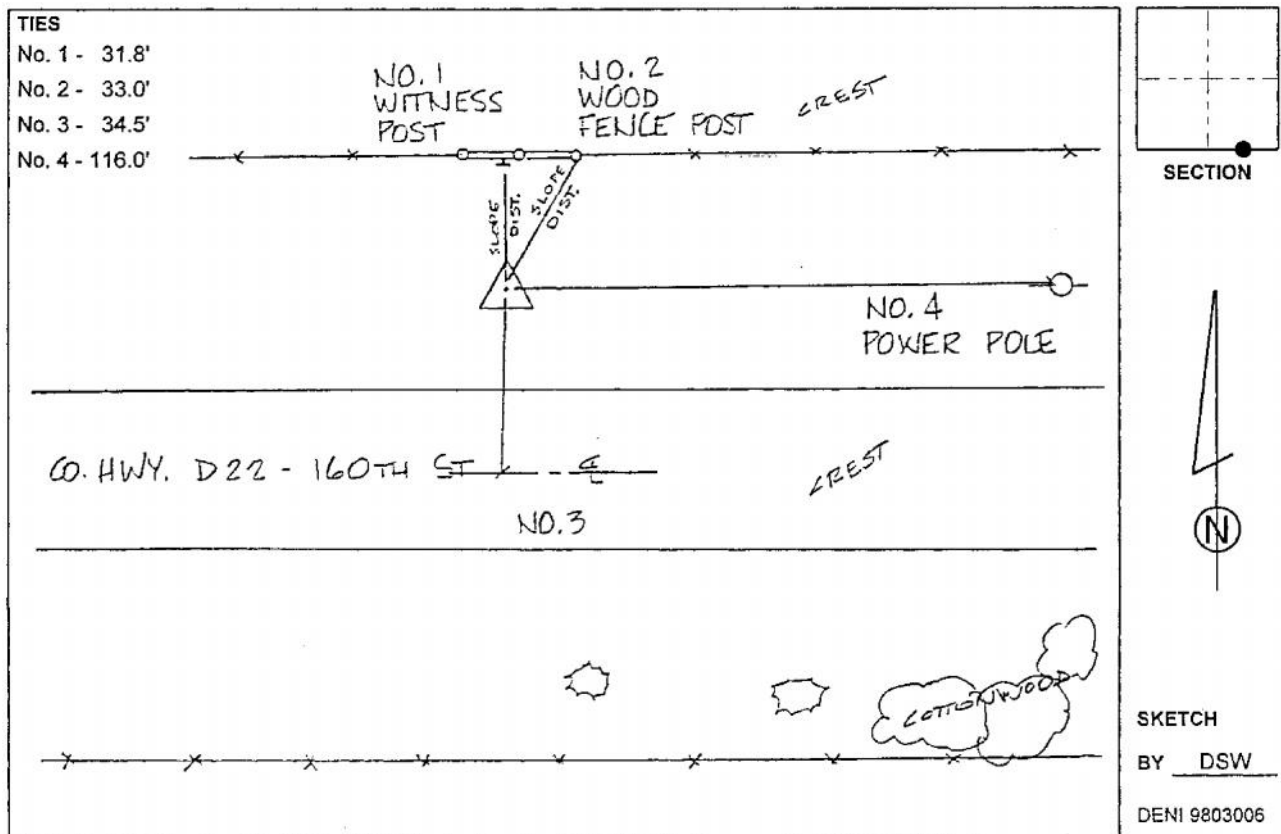
IaRCS Zone 4 Northing: **8580853.252sft**

Easting: **14194812.023sft**

Mapping Angle: **-00° 45' 53"**

Combination Scale Factor: **0.999983770**

Monument Type: 3-1/4" aluminum cap on aluminum rod in 6" PVC pipe with aluminum access cover.



This document was prepared by Dan Corbin, Inc. on March 6, 2015 for Woodbury County, Iowa.