

Woodbury County, Iowa

Horizontal Datum: **NAD 83(2011)** - Vertical Datum: **NAVD 1988**

Iowa State Plane North Zone (1401)

Iowa Regional Coordinate System Zone 4 Sioux City-Iowa Falls LCC

US Survey Feet

2015

Point Name: **8051**

GPS No. (1998): **8051**

Designation: 894413 2 (Set by DENI Associates in 1998)

NAD 83(NA2011) Latitude: **N42°31'06.86751"**

Longitude: **W95°58'45.23670"**

NAVD 88 Ortho Height: **1372.304sft**

Ellip. Ht: **1283.980sft**

Geoid09

Iowa North Zone (1401) Northing: **3661824.254sft**

Easting: **4252975.473sft**

Mapping Angle: **-1°40'49"**

Combination Scale Factor: **0.999887479**

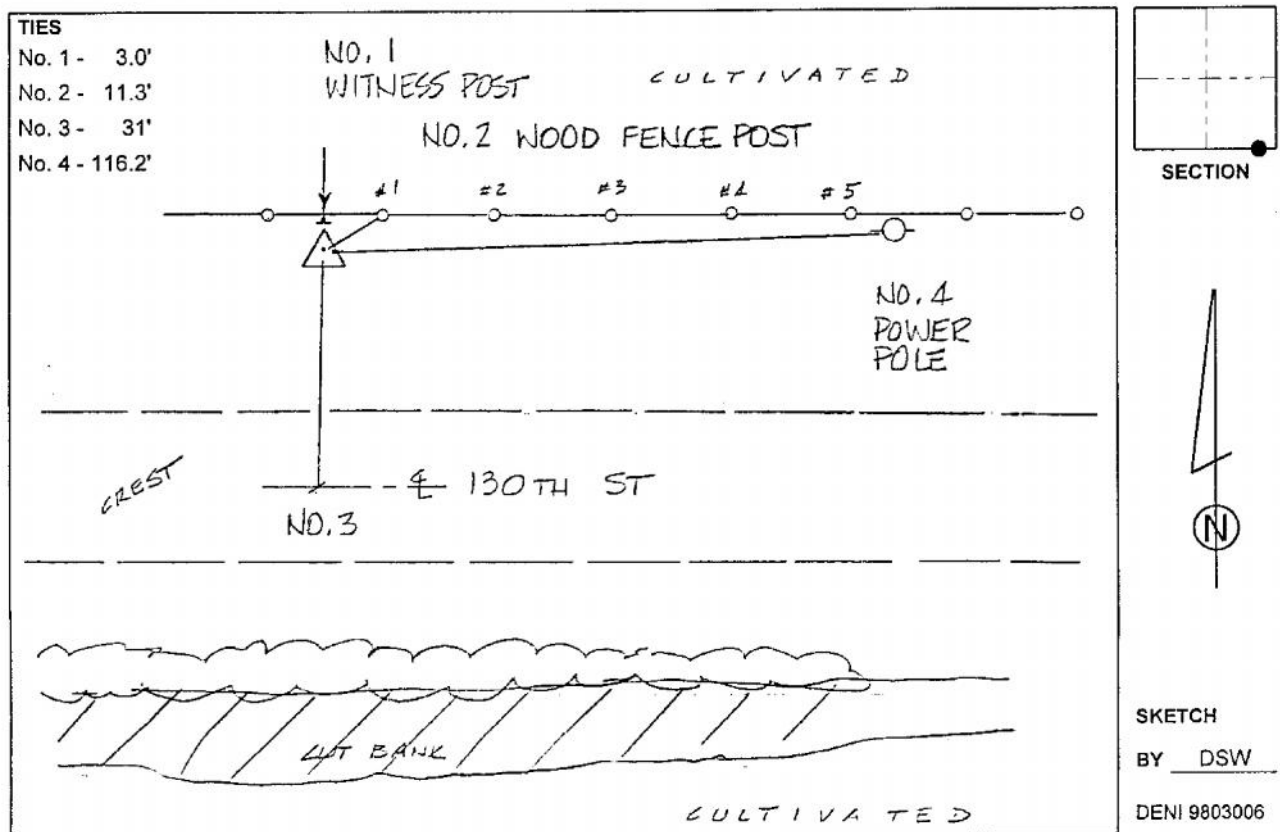
IaRCS Zone 4 Northing: **8596709.383sft**

Easting: **14191059.474sft**

Mapping Angle: **-00° 46' 29"**

Combination Scale Factor: **0.999983544**

Monument Type: 3-1/4" aluminum cap on aluminum rod in 6" PVC pipe with aluminum access cover.



This document was prepared by Dan Corbin, Inc. on March 6, 2015 for Woodbury County, Iowa.