

Woodbury County, Iowa

Horizontal Datum: **NAD 83(2011)** - Vertical Datum: **NAVD 1988**

Iowa State Plane North Zone (1401)

Iowa Regional Coordinate System Zone 4 Sioux City-Iowa Falls LCC

US Survey Feet

2015

Point Name: **8053**

GPS No. (1998): **8053**

Designation: 894404 4 (Set by DENI Associates in 1998)

NAD 83(NA2011) Latitude: **N42°33'39.75725"**

Longitude: **W96°03'20.98492"**

NAVD 88 Ortho Height: **1342.042sft**

Ellip. Ht: **1254.325sft**

Geoid09

Iowa North Zone (1401) Northing: **3677909.067sft**

Easting: **4232802.940sft**

Mapping Angle: **-1°43'56"**

Combination Scale Factor: **0.999887248**

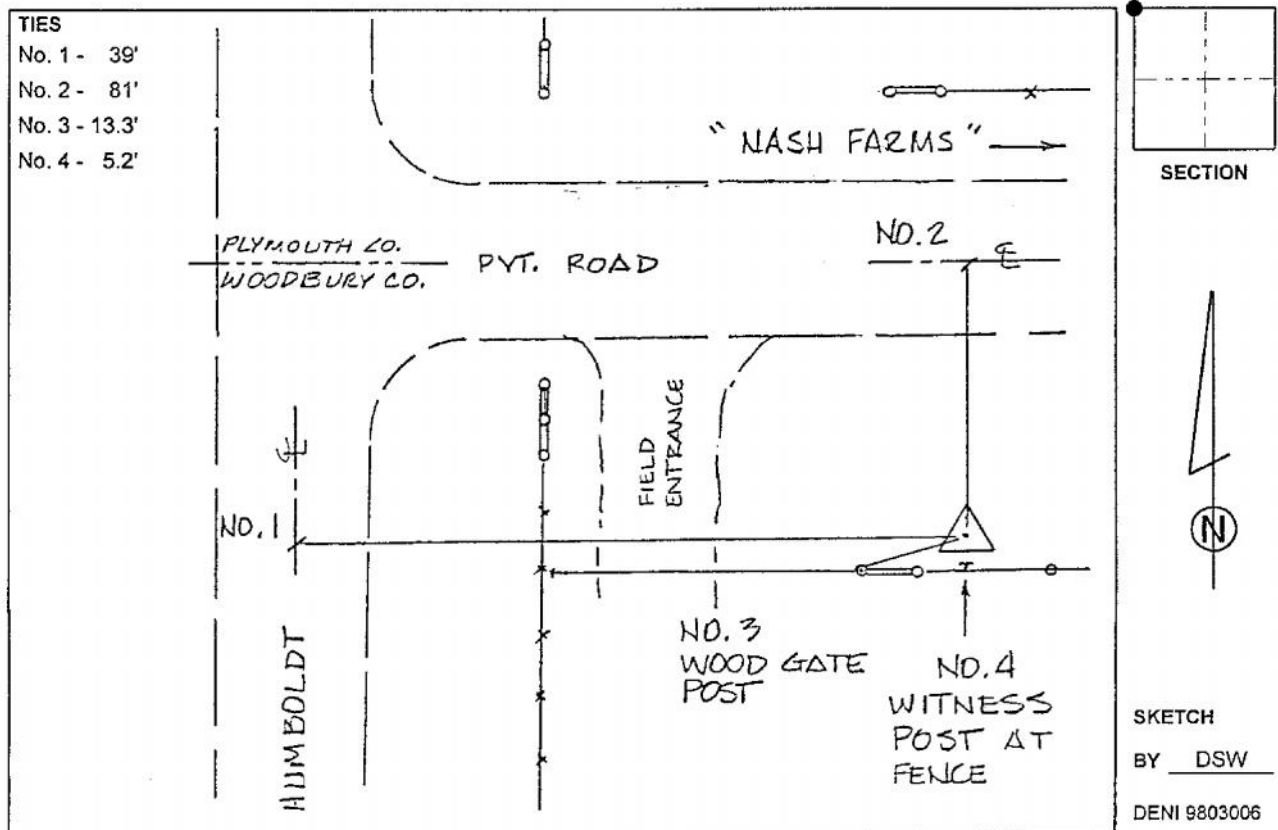
IaRCS Zone 4 Northing: **8612474.855sft**

Easting: **14170633.228sft**

Mapping Angle: **-00° 49' 35"**

Combination Scale Factor: **0.999985048**

Monument Type: 3-1/4" aluminum cap on aluminum rod in 6" PVC pipe with aluminum access cover.



This document was prepared by Dan Corbin, Inc. on March 6, 2015 for Woodbury County, Iowa.