

Woodbury County, Iowa

Horizontal Datum: **NAD 83(2011)** - Vertical Datum: **NAVD 1988**

Iowa State Plane North Zone (1401)

Iowa Regional Coordinate System Zone 4 Sioux City-Iowa Falls LCC

US Survey Feet

2015

Point Name: **8054**

GPS No. (1998): **8054**

Designation: 894416 2 (Set by DENI Associates in 1998)

NAD 83(NA2011) Latitude: **N42°31'06.52388"**

Longitude: **W96°02'13.39606"**

NAVD 88 Ortho Height: **1223.346sft**

Ellip. Ht: **1135.430sft**

Geoid09

Iowa North Zone (1401) Northing: **3662251.892sft**

Easting: **4237393.183sft**

Mapping Angle: **-1°43'10"**

Combination Scale Factor: **0.999894570**

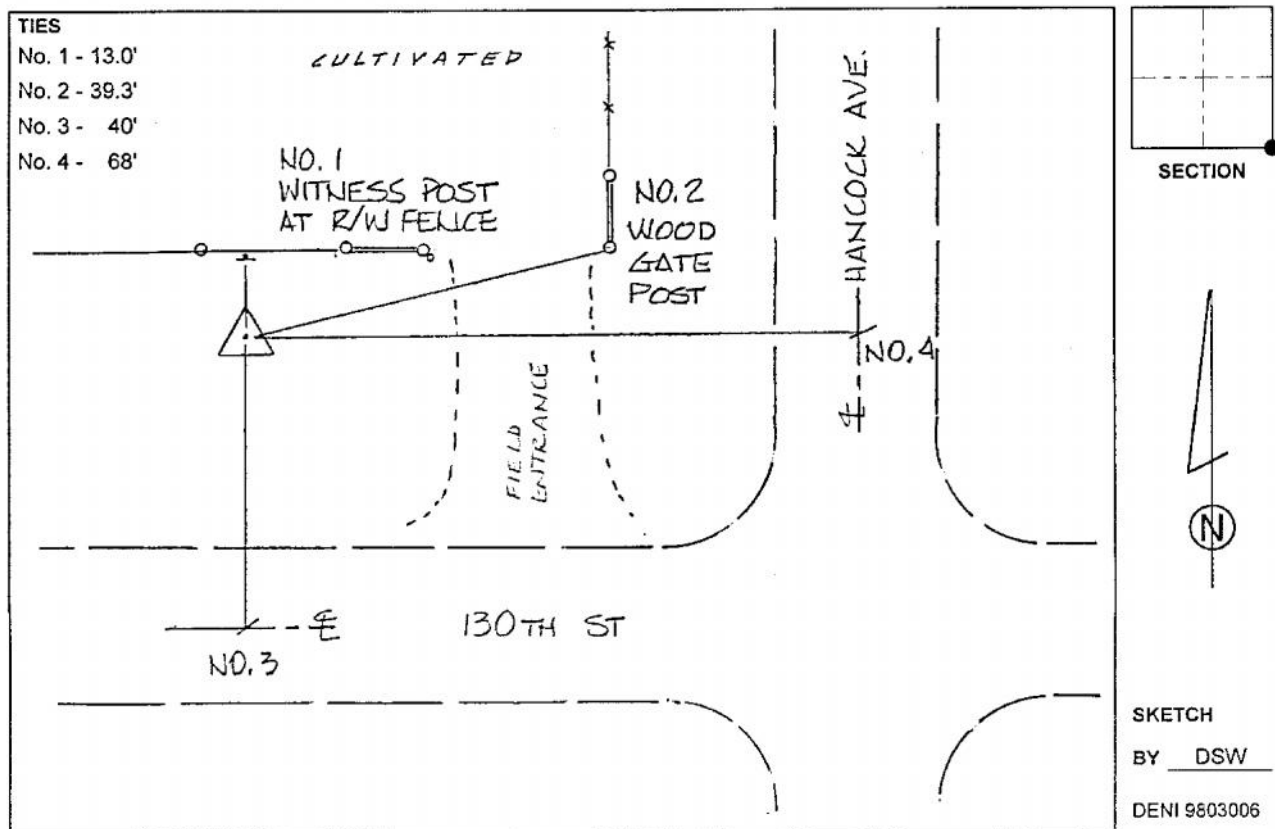
IaRCS Zone 4 Northing: **8596890.683sft**

Easting: **14175470.871sft**

Mapping Angle: **-00° 48' 49"**

Combination Scale Factor: **0.999990658**

Monument Type: 3-1/4" aluminum cap on aluminum rod in 6" PVC pipe with aluminum access cover.



This document was prepared by Dan Corbin, Inc. on March 6, 2015 for Woodbury County, Iowa.