

**Woodbury County, Iowa**

Horizontal Datum: **NAD 83(2011)** - Vertical Datum: **NAVD 1988**

Iowa State Plane North Zone (1401)

Iowa Regional Coordinate System Zone 4 Sioux City-Iowa Falls LCC

US Survey Feet

**2015**

Point Name: **8055**

GPS No. (1998): **8055**

**Designation:** 894434 2 (Set by DENI Associates in 1998)

NAD 83(NA2011) Latitude: **N42°28'30.35917"**

Longitude: **W96°01'21.01247"**

NAVD 88 Ortho Height: **1381.280sft**

Ellip. Ht: **1293.257sft**

**Geoid09**

Iowa North Zone (1401) Northing: **3646333.079sft**

Easting: **4240842.572sft**

Mapping Angle: **-1°42'35"**

Combination Scale Factor: **0.999889286**

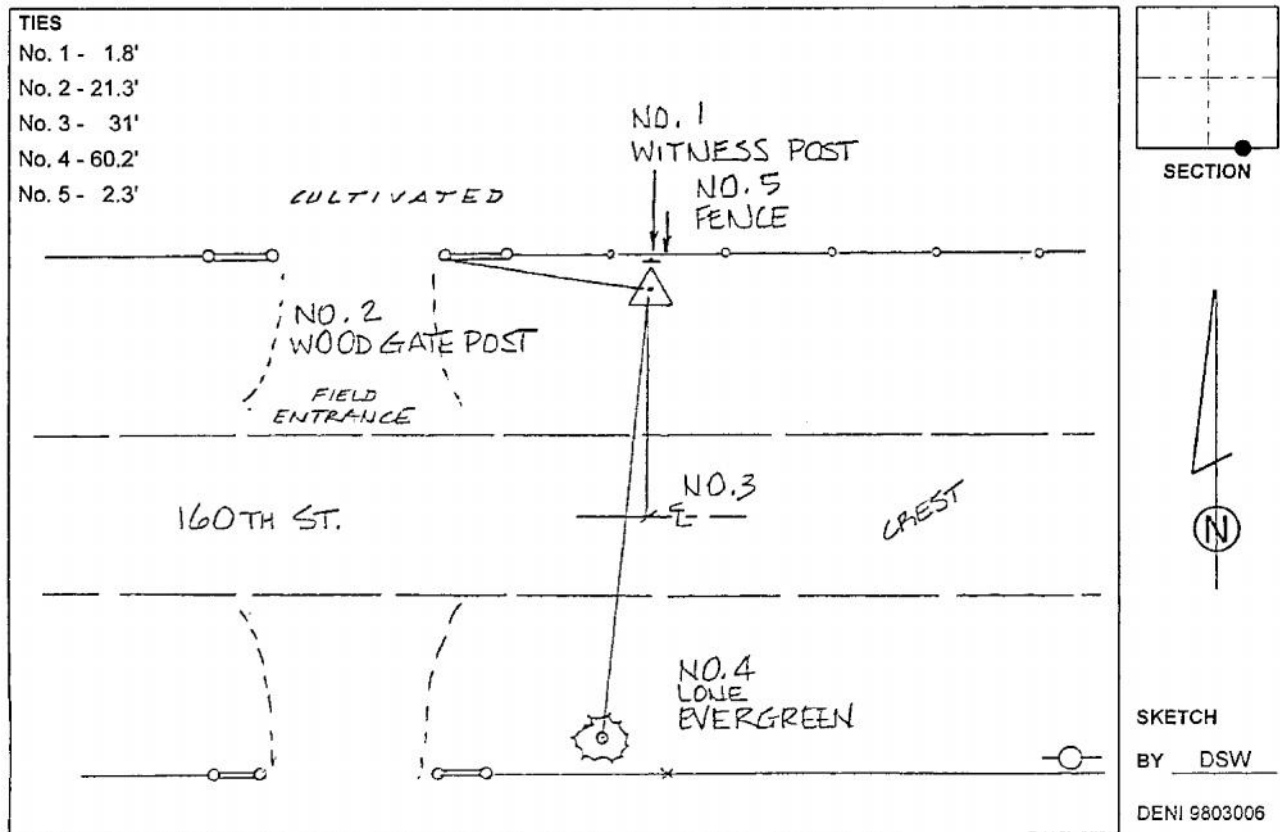
IaRCS Zone 4 Northing: **8581026.870sft**

Easting: **14179171.814sft**

Mapping Angle: **-00° 48' 14"**

Combination Scale Factor: **0.999983581**

**Monument Type:** 3-1/4" aluminum cap on aluminum rod in 6" PVC pipe with aluminum access cover.



*This document was prepared by Dan Corbin, Inc. on March 6, 2015 for Woodbury County, Iowa.*