

Woodbury County, Iowa

Horizontal Datum: **NAD 83(2011)** - Vertical Datum: **NAVD 1988**

Iowa State Plane North Zone (1401)

Iowa Regional Coordinate System Zone 4 Sioux City-Iowa Falls LCC

US Survey Feet

2015

Point Name: **8056**

GPS No. (1998): **8056**

Designation: 884524 1 (Set by DENI Associates in 1998)

NAD 83(NA2011) Latitude: **N42°25'42.34431"**

Longitude: **W96°01'08.73108"**

NAVD 88 Ortho Height: **1378.870sft**

Ellip. Ht: **1290.807sft**

Geoid09

Iowa North Zone (1401) Northing: **3629305.214sft**

Easting: **4241255.770sft**

Mapping Angle: **-1°42'26"**

Combination Scale Factor: **0.999892456**

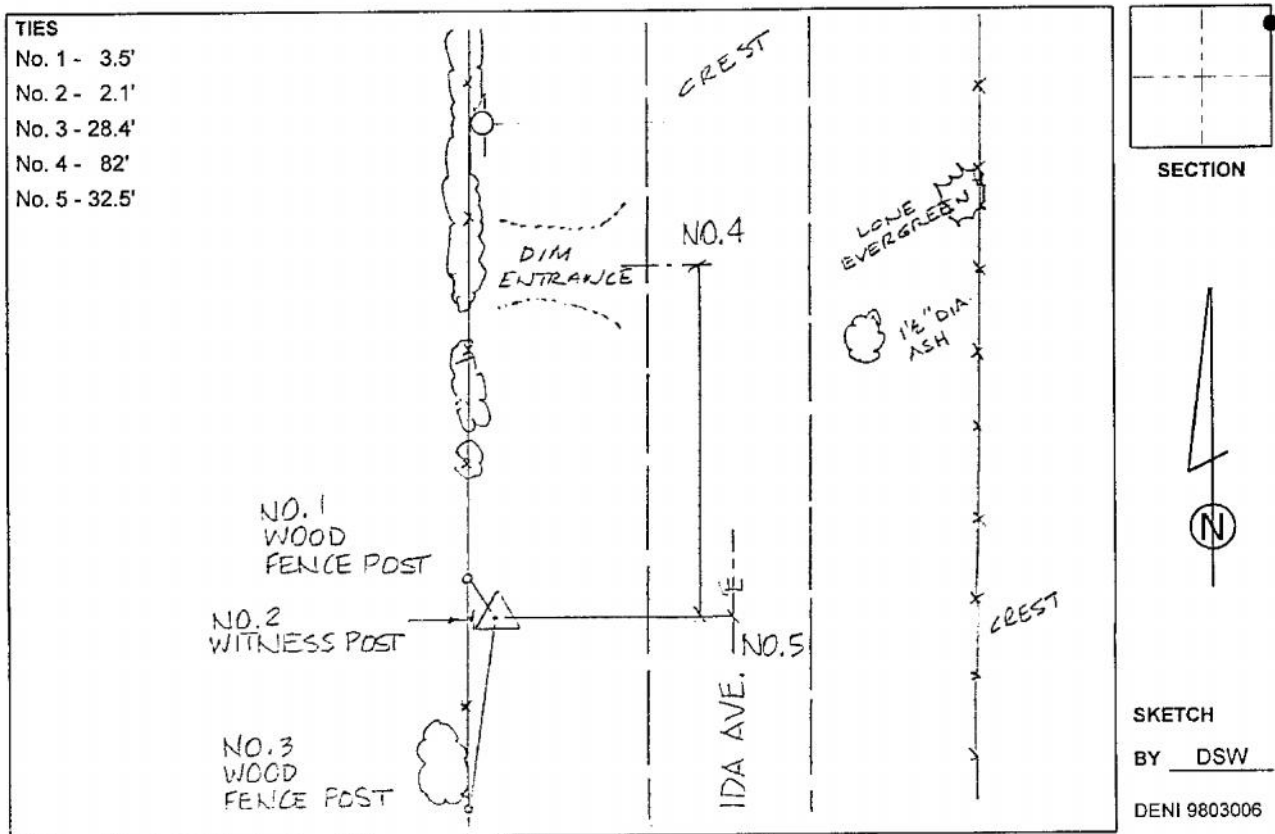
IaRCS Zone 4 Northing: **8564006.071sft**

Easting: **14179854.183sft**

Mapping Angle: **-00° 48' 06"**

Combination Scale Factor: **0.999984852**

Monument Type: 3-1/4" aluminum cap on aluminum rod in 6" PVC pipe with aluminum access cover.



This document was prepared by Dan Corbin, Inc. on March 6, 2015 for Woodbury County, Iowa.