

Woodbury County, Iowa

Horizontal Datum: **NAD 83(2011)** - Vertical Datum: **NAVD 1988**

Iowa State Plane North Zone (1401)

Iowa Regional Coordinate System Zone 4 Sioux City-Iowa Falls LCC

US Survey Feet

2015

Point Name: **8059**

GPS No. (1998): **8059**

Designation: 874431 3 (Set by DENI Associates in 1998)

NAD 83(NA2011) Latitude: **N42°18'00.07686"**

Longitude: **W96°01'10.06938"**

NAVD 88 Ortho Height: **1102.770sft**

Ellip. Ht: **1014.404sft**

Geoid09

Iowa North Zone (1401) Northing: **3582534.497sft**

Easting: **4239761.069sft**

Mapping Angle: **-1°42'27"**

Combination Scale Factor: **0.999917437**

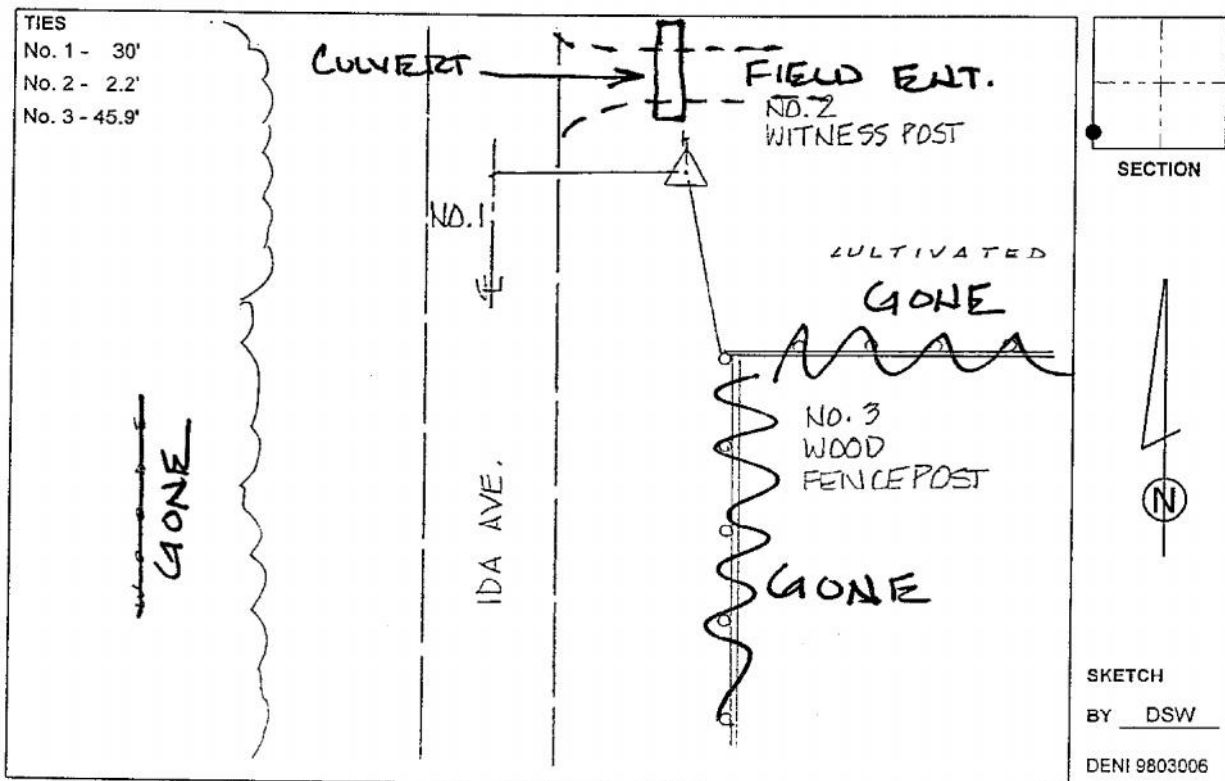
IaRCS Zone 4 Northing: **8517213.359sft**

Easting: **14179098.899sft**

Mapping Angle: **-00° 48' 07"**

Combination Scale Factor: **1.000004669**

Monument Type: 3-1/4" aluminum cap on aluminum rod in 6" PVC pipe with aluminum access cover.



This document was prepared by Dan Corbin, Inc. on March 6, 2015 for Woodbury County, Iowa.