

Woodbury County, Iowa

Horizontal Datum: **NAD 83(2011)** - Vertical Datum: **NAVD 1988**

Iowa State Plane North Zone (1401)

Iowa Regional Coordinate System Zone 4 Sioux City-Iowa Falls LCC

US Survey Feet

2015

Point Name: **8060**

GPS No. (1998): **8060**

Designation: 864419 4 (Set by DENI Associates in 1998)

NAD 83(NA2011) Latitude: **N42°15'16.88806"**

Longitude: **W96°01'10.62277"**

NAVD 88 Ortho Height: **1200.800sft**

Ellip. Ht: **1112.280sft**

Geoid09

Iowa North Zone (1401) Northing: **3566023.873sft**

Easting: **4239227.232sft**

Mapping Angle: **-1°42'28"**

Combination Scale Factor: **0.999918119**

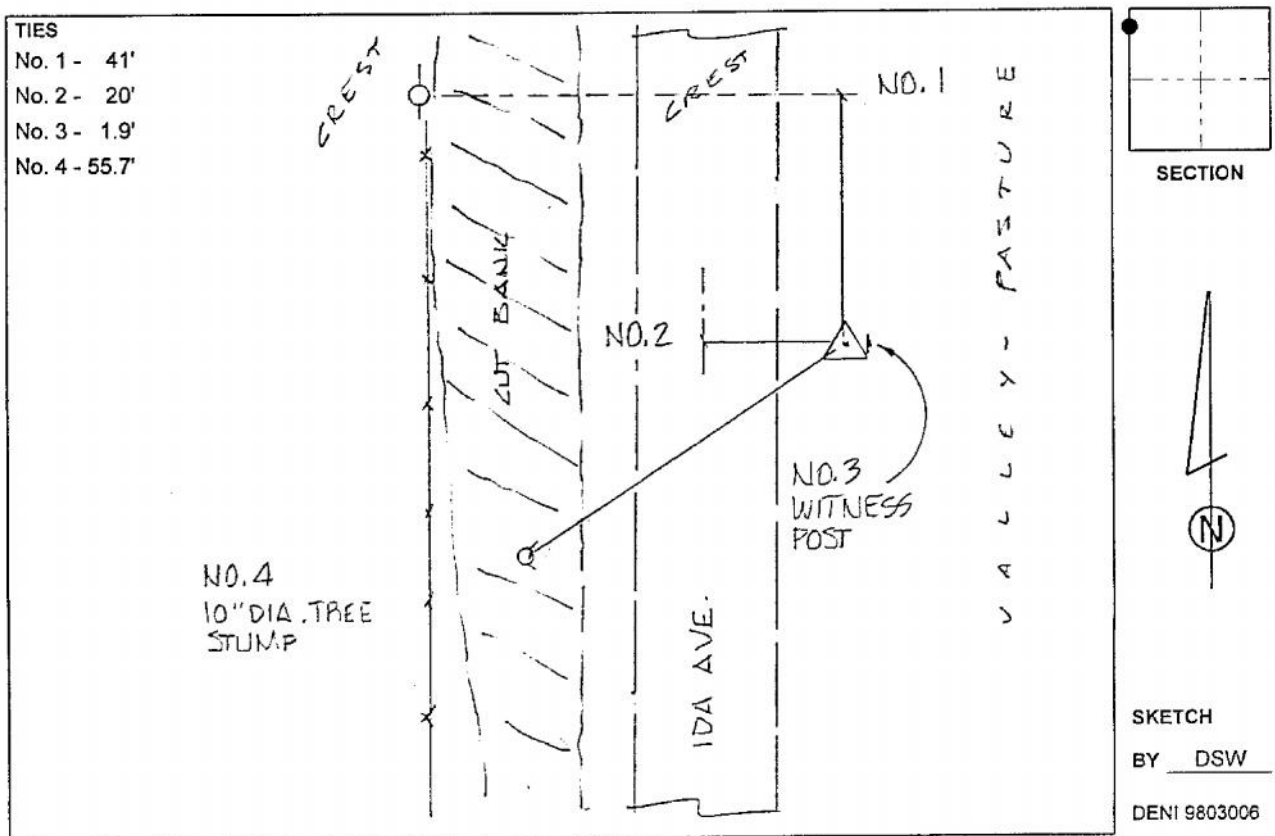
IaRCS Zone 4 Northing: **8500694.931sft**

Easting: **14178826.088sft**

Mapping Angle: **-00° 48' 07"**

Combination Scale Factor: **1.000003496**

Monument Type: 3-1/4" aluminum cap on aluminum rod in 6" PVC pipe with aluminum access cover.



This document was prepared by Dan Corbin, Inc. on March 6, 2015 for Woodbury County, Iowa.