

**Woodbury County, Iowa**

Horizontal Datum: **NAD 83(2011)** - Vertical Datum: **NAVD 1988**

Iowa State Plane North Zone (1401)

Iowa Regional Coordinate System Zone 4 Sioux City-Iowa Falls LCC

US Survey Feet

**2015**

Point Name: **8061**

GPS No. (1998): **8061**

**Designation:** 864536 2 (Set by DENI Associates in 1998)

NAD 83(NA2011) Latitude: **N42°12'51.35490"**

Longitude: **W96°01'42.49436"**

NAVD 88 Ortho Height: **1093.000sft**

Ellip. Ht: **1004.322sft**

**Geoid09**

Iowa North Zone (1401) Northing: **3551370.080sft**

Easting: **4236390.960sft**

Mapping Angle: **-1°42'49"**

Combination Scale Factor: **0.999928566**

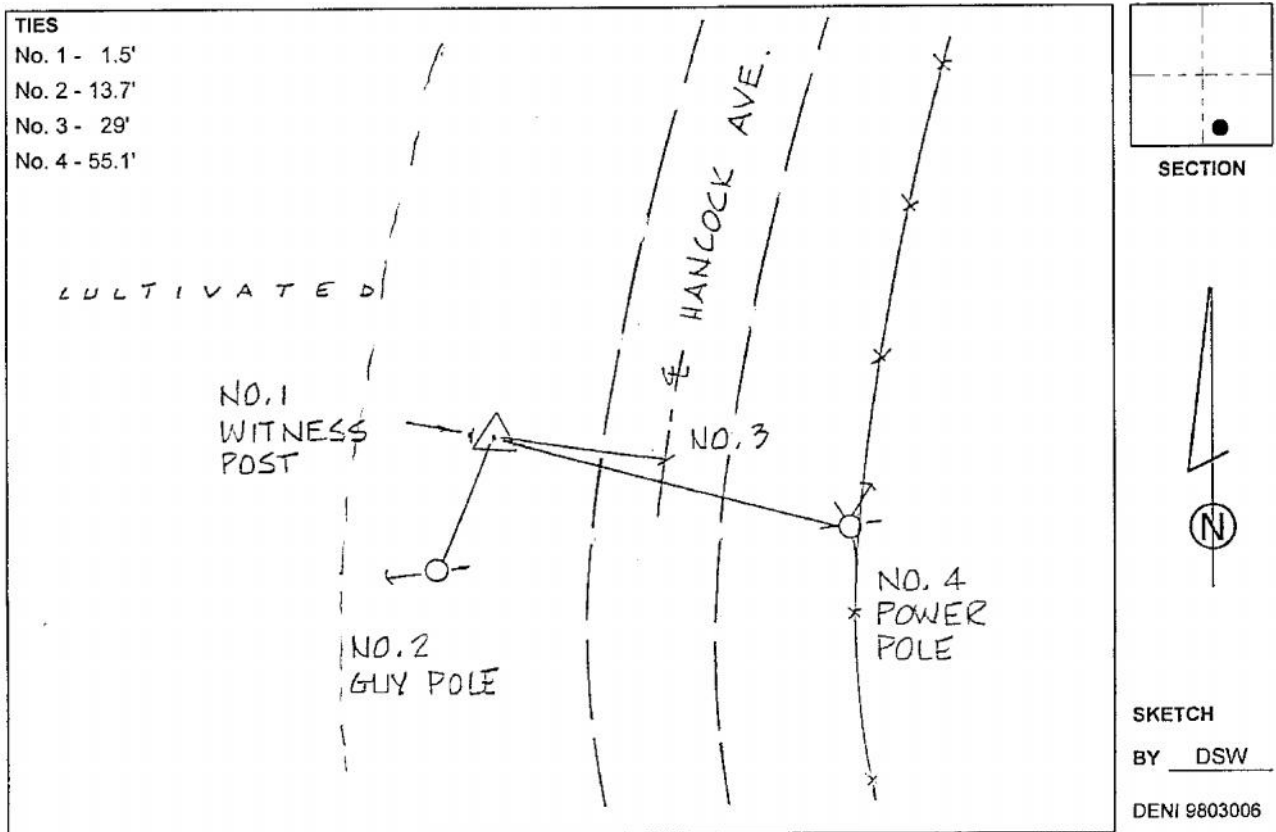
IaRCS Zone 4 Northing: **8485996.891sft**

Easting: **14176221.583sft**

Mapping Angle: **-00° 48' 29"**

Combination Scale Factor: **1.000012323**

**Monument Type:** 3-1/4" aluminum cap on aluminum rod in 6" PVC pipe with aluminum access cover.



*This document was prepared by Dan Corbin, Inc. on March 6, 2015 for Woodbury County, Iowa.*