

Woodbury County, Iowa

Horizontal Datum: **NAD 83(2011)** - Vertical Datum: **NAVD 1988**

Iowa State Plane North Zone (1401)

Iowa Regional Coordinate System Zone 4 Sioux City-Iowa Falls LCC

US Survey Feet

2015

Point Name: **8062**

GPS No. (1998): **8062**

Designation: 864534 3 (Set by DENI Associates in 1998)

NAD 83(NA2011) Latitude: **N42°12'45.96003"**

Longitude: **W96°04'40.24040"**

NAVD 88 Ortho Height: **1071.520sft**

Ellip. Ht: **983.234sft**

Geoid09

Iowa North Zone (1401) Northing: **3551228.115sft**

Easting: **4223005.051sft**

Mapping Angle: **-1°44'50"**

Combination Scale Factor: **0.999929778**

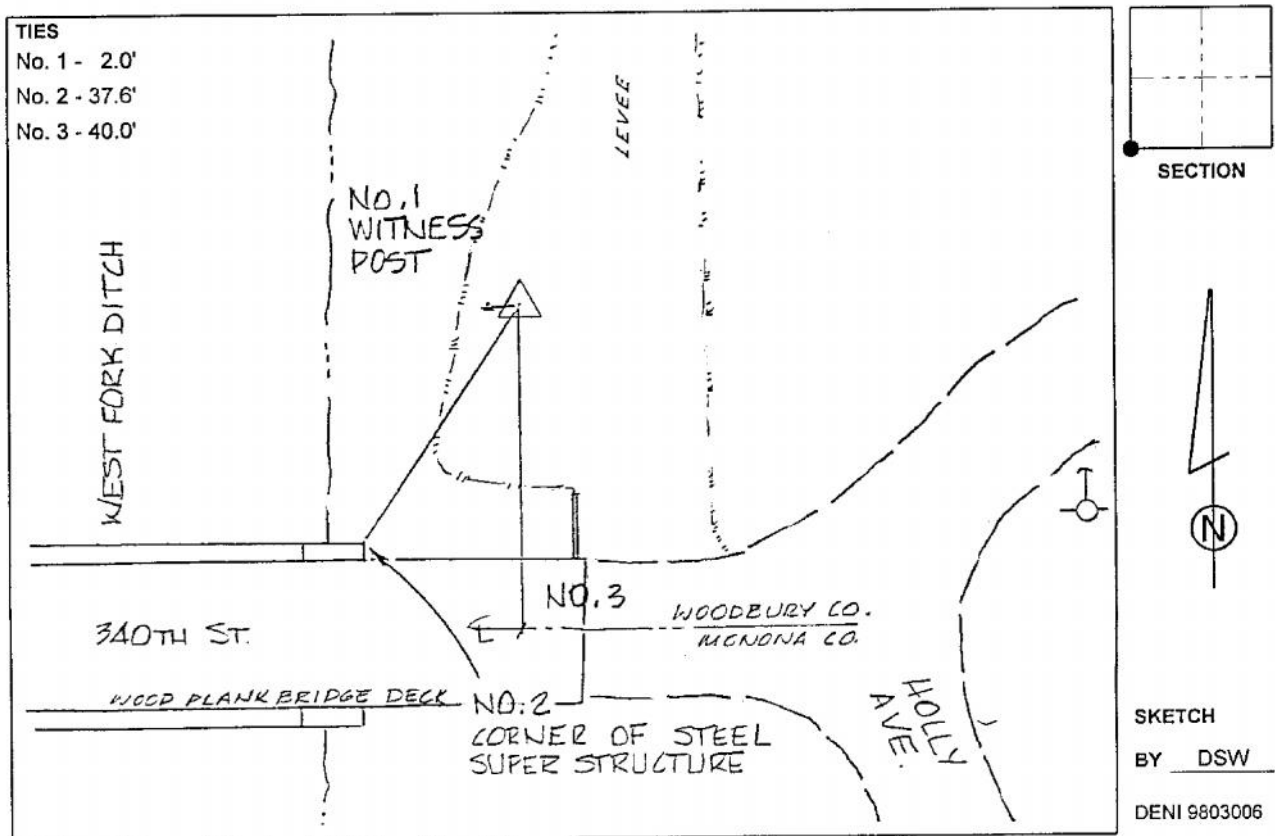
IaRCS Zone 4 Northing: **8485643.309sft**

Easting: **14162838.467sft**

Mapping Angle: **-00° 50' 29"**

Combination Scale Factor: **1.000013478**

Monument Type: 3-1/4" aluminum cap on aluminum rod in 6" PVC pipe with aluminum access cover.



This document was prepared by Dan Corbin, Inc. on March 6, 2015 for Woodbury County, Iowa.