

**Woodbury County, Iowa**

Horizontal Datum: **NAD 83(2011)** - Vertical Datum: **NAVD 1988**

Iowa State Plane North Zone (1401)

Iowa Regional Coordinate System Zone 4 Sioux City-Iowa Falls LCC

US Survey Feet

**2015**

Point Name: **8064**

GPS No. (1998): **8064**

**Designation:** 874533 2 (Set by DENI Associates in 1998)

NAD 83(NA2011) Latitude: **N42°17'59.87096"**

Longitude: **W96°04'39.71571"**

NAVD 88 Ortho Height: **1173.520sft**

Ellip. Ht: **1085.564sft**

**Geoid09**

Iowa North Zone (1401) Northing: **3582988.536sft**

Easting: **4224013.269sft**

Mapping Angle: **-1°44'49"**

Combination Scale Factor: **0.999914048**

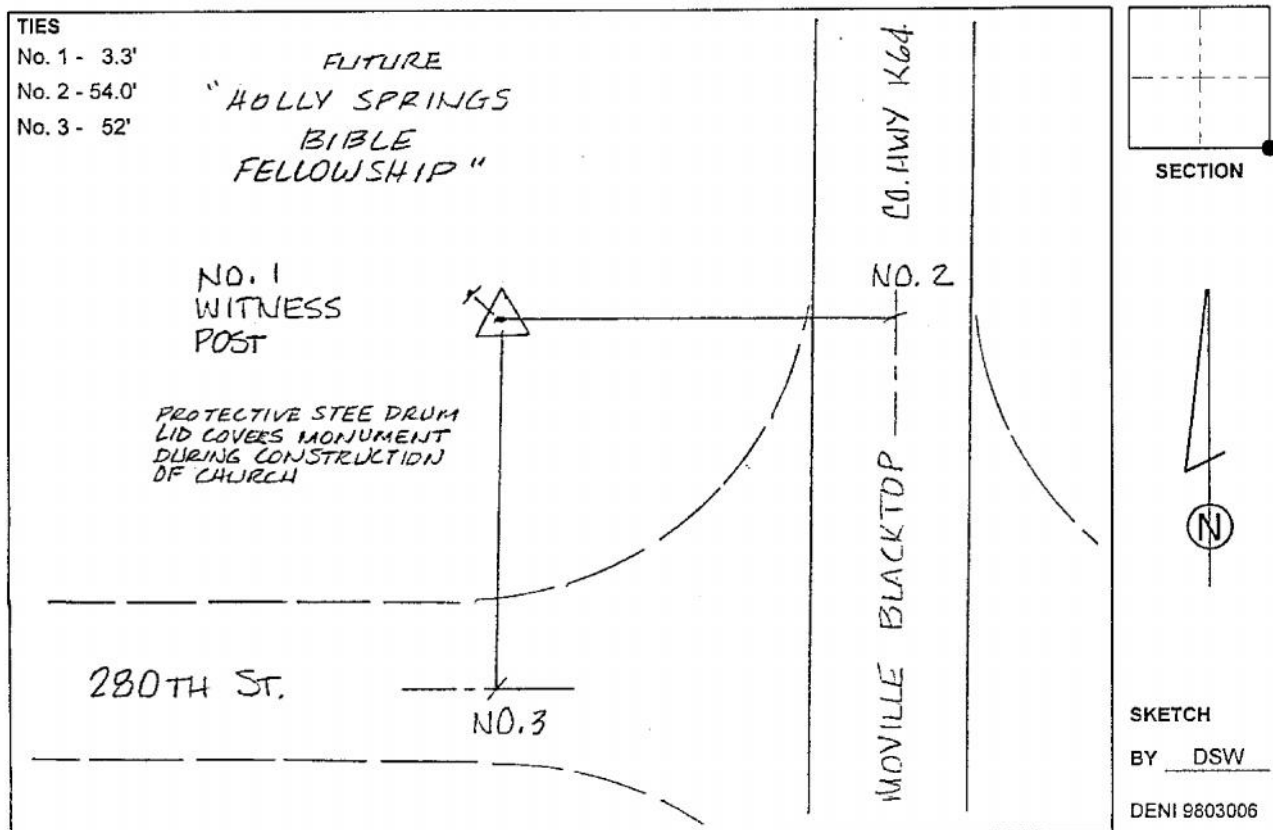
IaRCS Zone 4 Northing: **8517418.421sft**

Easting: **14163344.513sft**

Mapping Angle: **-00° 50' 28"**

Combination Scale Factor: **1.000001265**

**Monument Type:** 3-1/4" aluminum cap on aluminum rod in 6" PVC pipe with aluminum access cover.



*This document was prepared by Dan Corbin, Inc. on March 6, 2015 for Woodbury County, Iowa.*