

Woodbury County, Iowa

Horizontal Datum: **NAD 83(2011)** - Vertical Datum: **NAVD 1988**

Iowa State Plane North Zone (1401)

Iowa Regional Coordinate System Zone 4 Sioux City-Iowa Falls LCC

US Survey Feet

2015

Point Name: **8065**

GPS No. (1998): **8065**

Designation: 874522 4 (Set by DENI Associates in 1998)

NAD 83(NA2011) Latitude: **N42°20'34.23174"**

Longitude: **W96°04'39.41083"**

NAVD 88 Ortho Height: **1128.560sft**

Ellip. Ht: **1040.716sft**

Geoid09

Iowa North Zone (1401) Northing: **3598606.179sft**

Easting: **4224512.524sft**

Mapping Angle: **-1°44'49"**

Combination Scale Factor: **0.999911695**

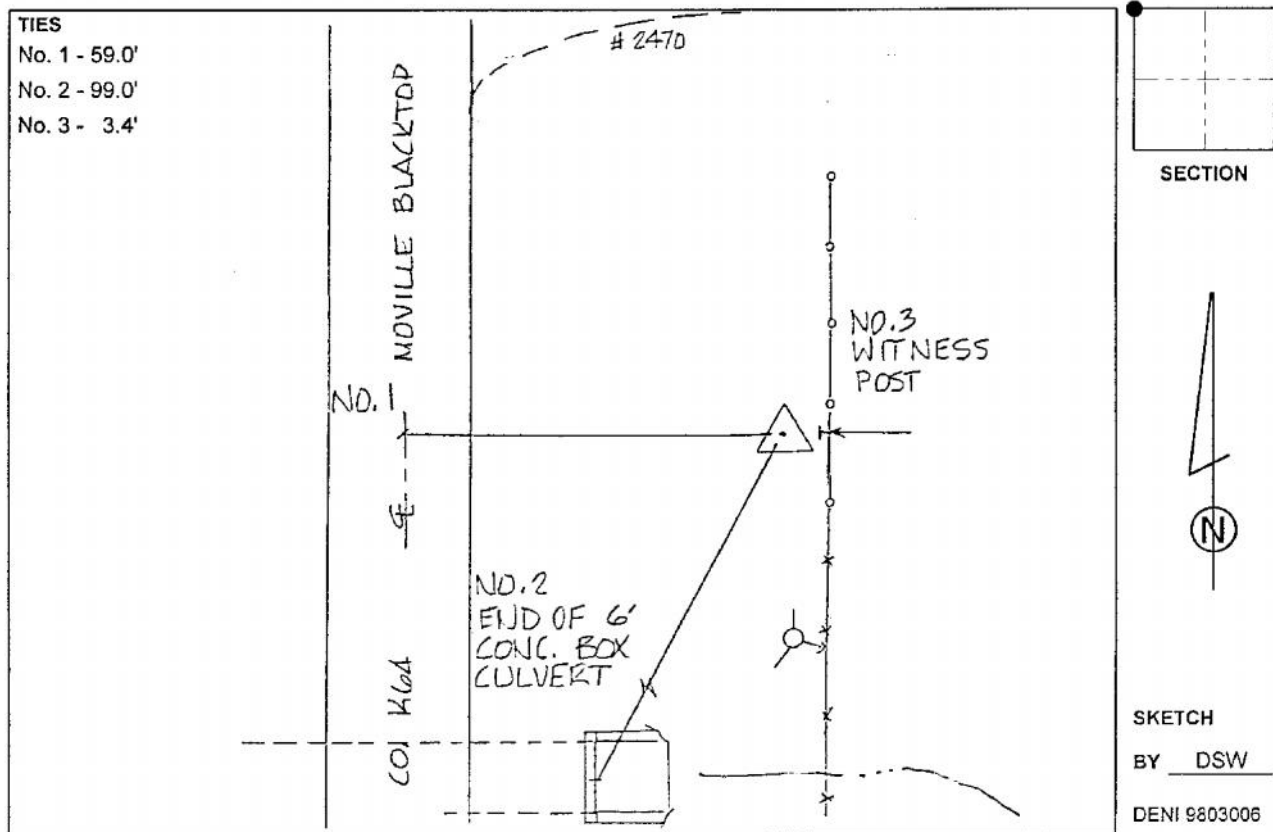
IaRCS Zone 4 Northing: **8533043.385sft**

Easting: **14163596.834sft**

Mapping Angle: **-00° 50' 28"**

Combination Scale Factor: **1.000000660**

Monument Type: 3-1/4" aluminum cap on aluminum rod in 6" PVC pipe with aluminum access cover.



This document was prepared by Dan Corbin, Inc. on March 6, 2015 for Woodbury County, Iowa.