

Woodbury County, Iowa

Horizontal Datum: **NAD 83(2011)** - Vertical Datum: **NAVD 1988**

Iowa State Plane North Zone (1401)

Iowa Regional Coordinate System Zone 4 Sioux City-Iowa Falls LCC

US Survey Feet

2015

Point Name: **8066**

GPS No. (1998): **8066**

Designation: 884534 3 (Set by DENI Associates in 1998)

NAD 83(NA2011) Latitude: **N42°23'10.70693"**

Longitude: **W96°04'37.52091"**

NAVD 88 Ortho Height: **1139.950sft**

Ellip. Ht: **1052.242sft**

Geoid09

Iowa North Zone (1401) Northing: **3614434.187sft**

Easting: **4225137.167sft**

Mapping Angle: **-1°44'48"**

Combination Scale Factor: **0.999907157**

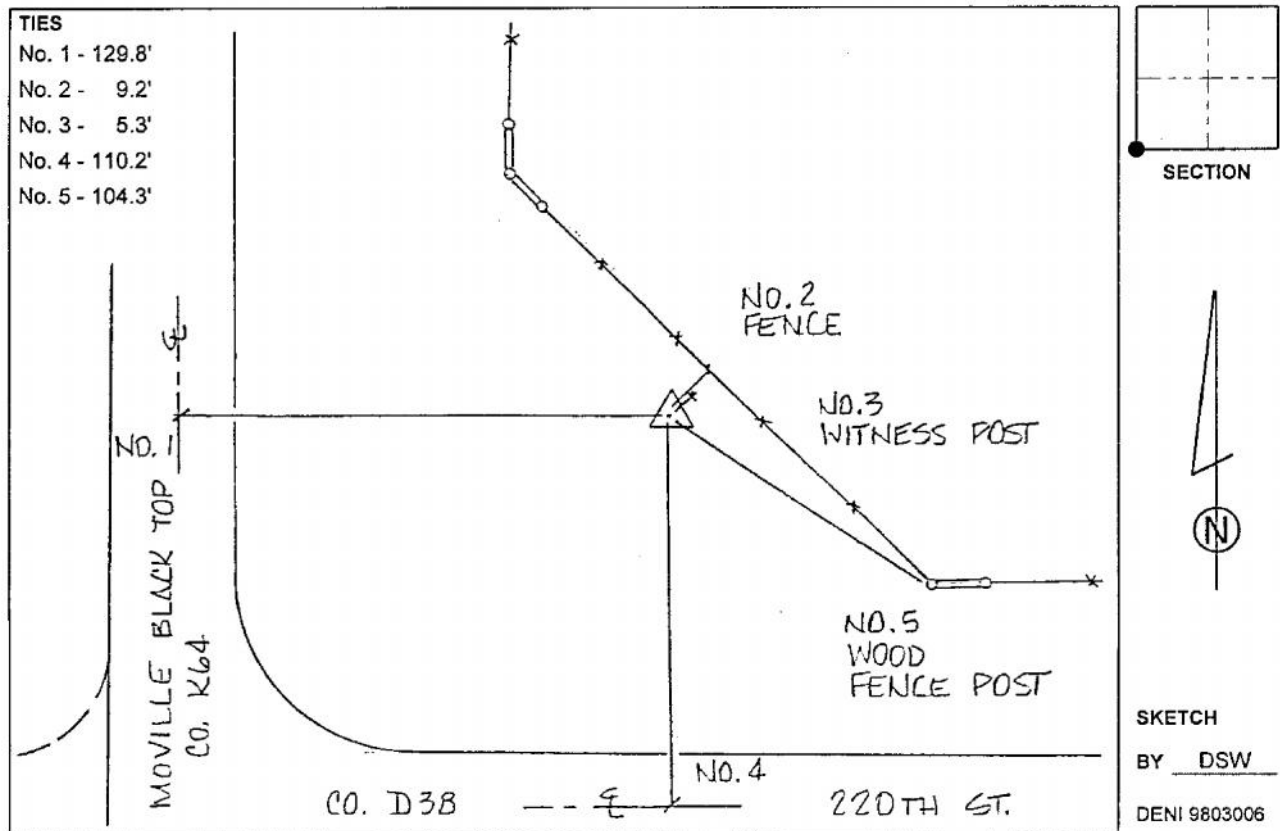
IaRCS Zone 4 Northing: **8548880.716sft**

Easting: **14163971.213sft**

Mapping Angle: **-00° 50' 27"**

Combination Scale Factor: **0.999997885**

Monument Type: 3-1/4" aluminum cap on aluminum rod in 6" PVC pipe with aluminum access cover.



This document was prepared by Dan Corbin, Inc. on March 6, 2015 for Woodbury County, Iowa.