

Woodbury County, Iowa

Horizontal Datum: **NAD 83(2011)** - Vertical Datum: **NAVD 1988**

Iowa State Plane North Zone (1401)

Iowa Regional Coordinate System Zone 4 Sioux City-Iowa Falls LCC

US Survey Feet

2015

Point Name: **8067**

GPS No. (1998): **8067**

Designation: 884522 4 (Set by DENI Associates in 1998)

NAD 83(NA2011) Latitude: **N42°25'38.17053"**

Longitude: **W96°04'38.24023"**

NAVD 88 Ortho Height: **1167.520sft**

Ellip. Ht: **1079.885sft**

Geoid09

Iowa North Zone (1401) Northing: **3629356.420sft**

Easting: **4225538.228sft**

Mapping Angle: **-1°44'48"**

Combination Scale Factor: **0.999902602**

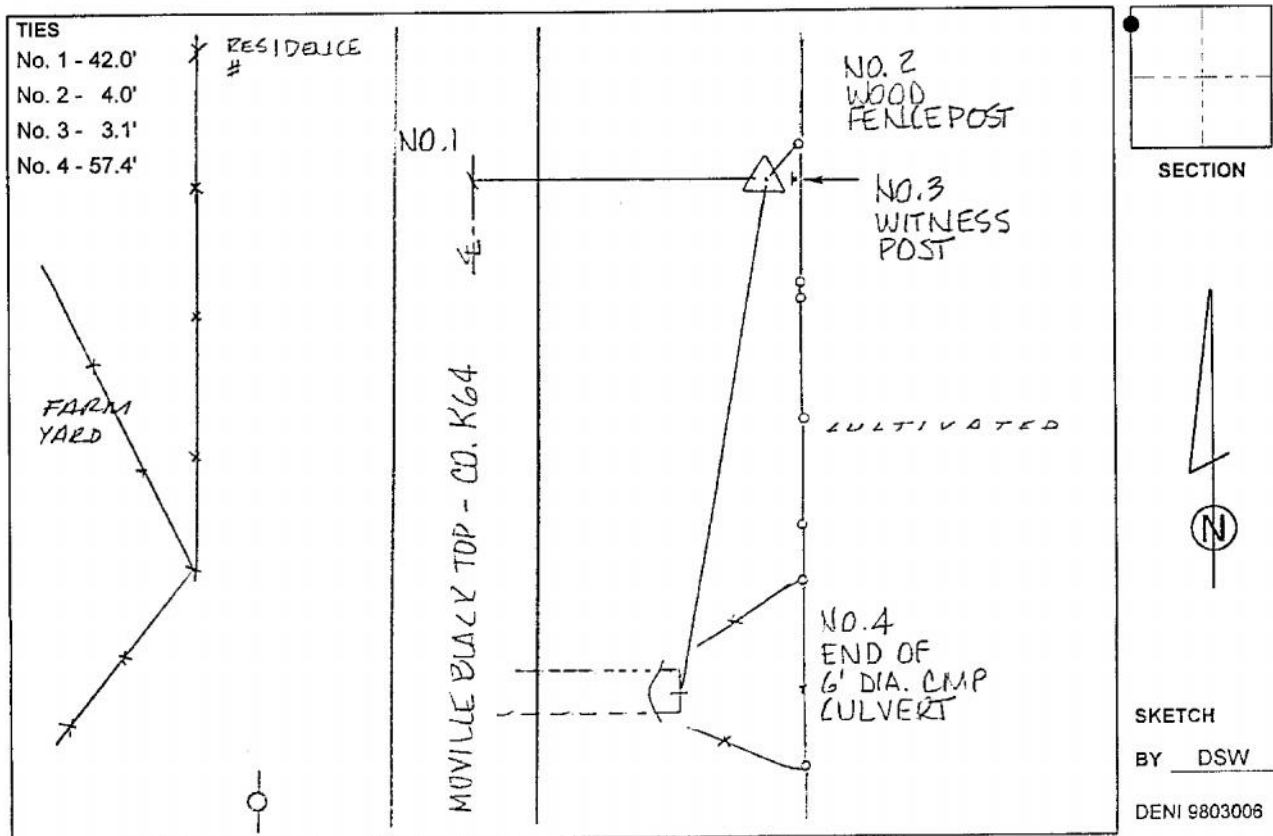
IaRCS Zone 4 Northing: **8563808.794sft**

Easting: **14164136.339sft**

Mapping Angle: **-00° 50' 27"**

Combination Scale Factor: **0.999994990**

Monument Type: 3-1/4" aluminum cap on aluminum rod in 6" PVC pipe with aluminum access cover.



This document was prepared by Dan Corbin, Inc. on March 6, 2015 for Woodbury County, Iowa.