

**Woodbury County, Iowa**

Horizontal Datum: **NAD 83(2011)** - Vertical Datum: **NAVD 1988**

Iowa State Plane North Zone (1401)

Iowa Regional Coordinate System Zone 4 Sioux City-Iowa Falls LCC

US Survey Feet

**2015**

Point Name: **8068**

GPS No. (1998): **8068**

**Designation:** 894431 2 (Set by DENI Associates in 1998)

NAD 83(NA2011) Latitude: **N42°28'30.24258"**

Longitude: **W96°04'59.28168"**

NAVD 88 Ortho Height: **1161.650sft**

Ellip. Ht: **1074.050sft**

**Geoid09**

Iowa North Zone (1401) Northing: **3646815.125sft**

Easting: **4224493.118sft**

Mapping Angle: **-1°45'03"**

Combination Scale Factor: **0.999899746**

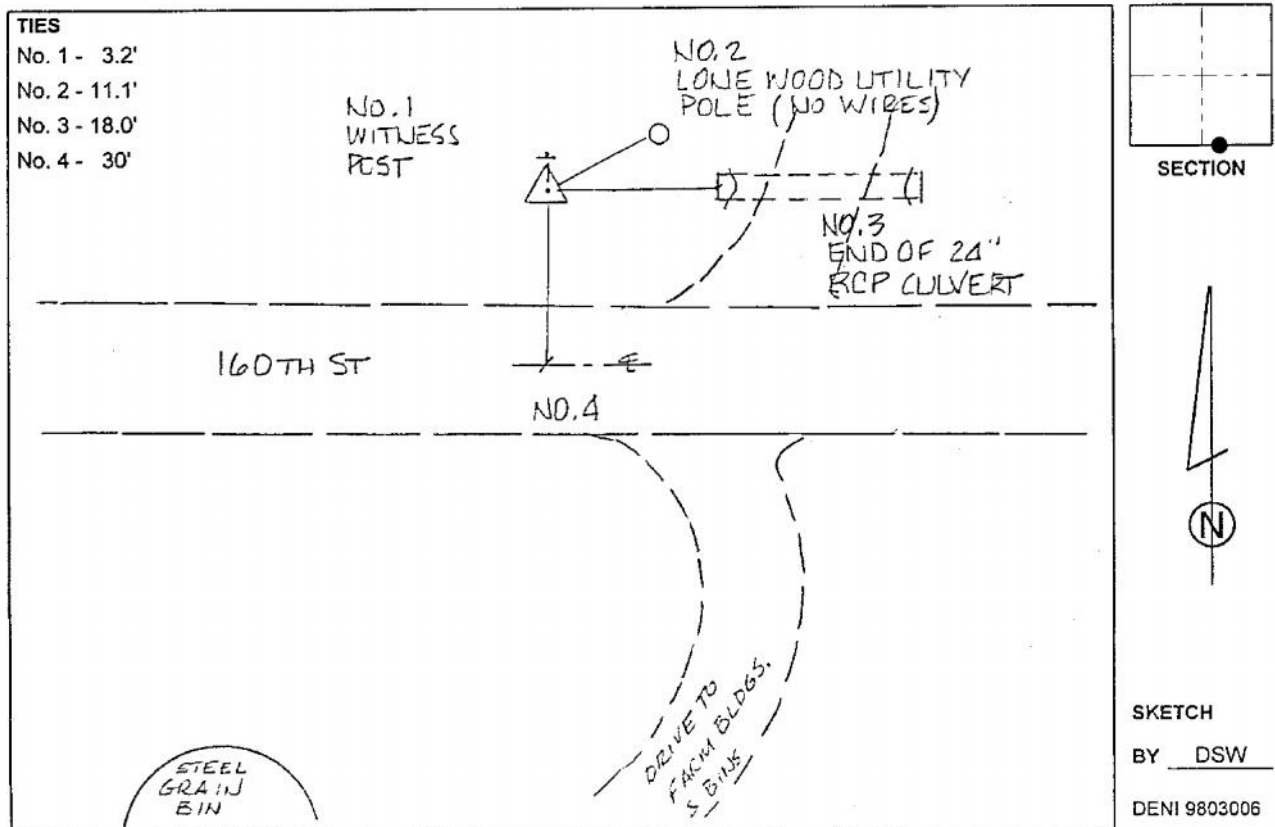
IaRCS Zone 4 Northing: **8581250.427sft**

Easting: **14162815.237sft**

Mapping Angle: **-00° 50' 42"**

Combination Scale Factor: **0.999994079**

**Monument Type:** 3-1/4" aluminum cap on aluminum rod in 6" PVC pipe with aluminum access cover.



*This document was prepared by Dan Corbin, Inc. on March 6, 2015 for Woodbury County, Iowa.*