

Woodbury County, Iowa

Horizontal Datum: **NAD 83(2011)** - Vertical Datum: **NAVD 1988**

Iowa State Plane North Zone (1401)

Iowa Regional Coordinate System Zone 4 Sioux City-Iowa Falls LCC

US Survey Feet

2015

Point Name: **8069**

GPS No. (1998): **8069**

Designation: 894418 3 (Set by DENI Associates in 1998)

NAD 83(NA2011) Latitude: **N42°31'06.15616"**

Longitude: **W96°05'34.36543"**

NAVD 88 Ortho Height: **1236.260sft**

Ellip. Ht: **1148.711sft**

Geoid09

Iowa North Zone (1401) Northing: **3662671.234sft**

Easting: **4222349.264sft**

Mapping Angle: **-1°45'26"**

Combination Scale Factor: **0.999893941**

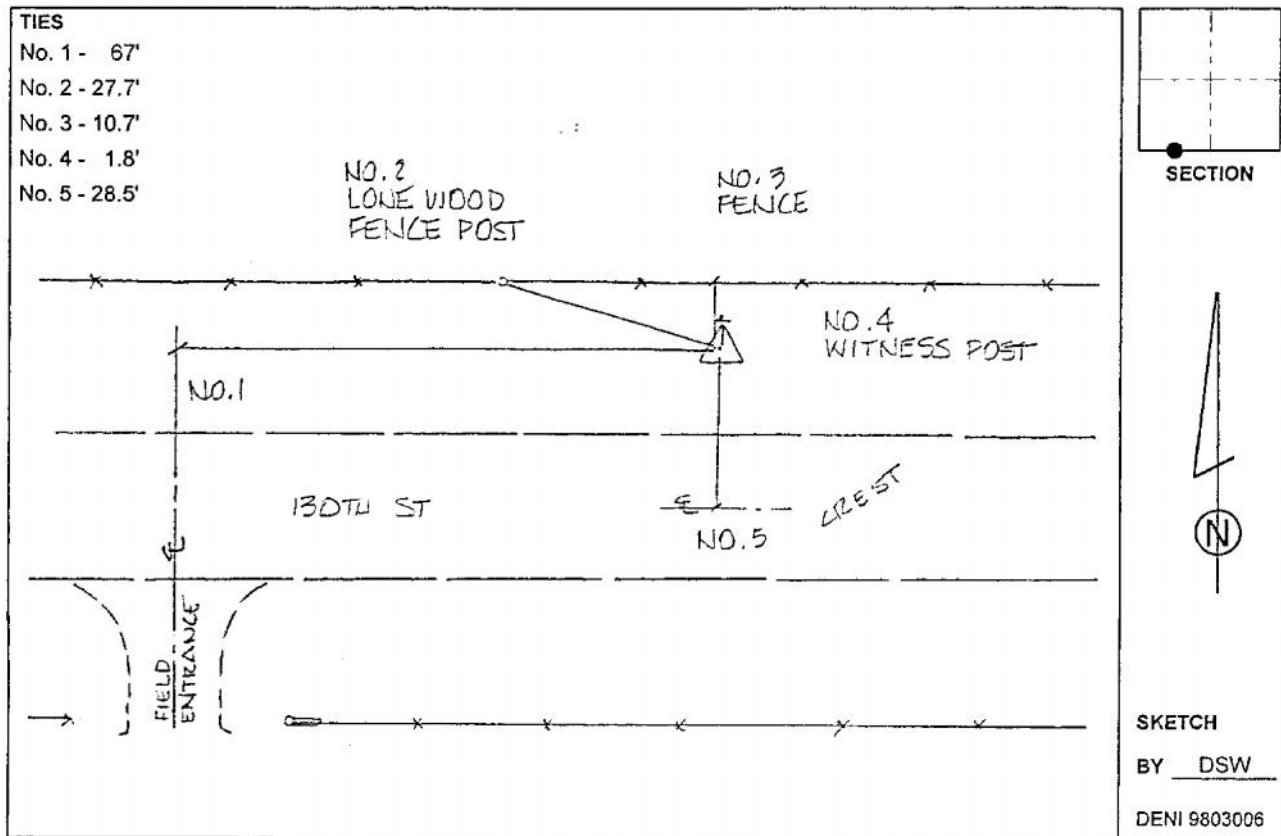
IaRCS Zone 4 Northing: **8597072.171sft**

Easting: **14160420.754sft**

Mapping Angle: **-00° 51' 05"**

Combination Scale Factor: **0.999990023**

Monument Type: 3-1/4" aluminum cap on aluminum rod in 6" PVC pipe with aluminum access cover.



This document was prepared by Dan Corbin, Inc. on March 6, 2015 for Woodbury County, Iowa.